



Senior Steve Battaglia



Senior Nate Rambacher

GROVE CITY COLLEGE
2012-2013
MEN'S BASKETBALL

TABLE OF CONTENTS

2012-2013 SCHEDULE

Nov. 15	Penn State Behrend Tournament	
Nov. 16	Penn State Behrend Tournament	
Nov. 20	at Kenyon	7:00
Nov. 28	at Thomas More*	7:30
Dec. 1	BETHANY*	3:00
Dec. 5	at Waynesburg*	7:30
Dec. 8	SAINT VINCENT*	3:00
Dec. 12	at Oberlin	7:30
Dec. 28	York (Pa.) College Tournament	
Dec. 29	York (Pa.) College Tournament	
Jan. 3	PENN STATE BEAVER	7:00
Jan. 5	at Geneva*	3:00
Jan. 9	WASH. & JEFF.*	8:00
Jan. 12	THIEL*	3:00
Jan. 14	PENN STATE ALTOONA	6:00
Jan. 16	at Westminster*	8:00
Jan. 19	THOMAS MORE*	3:00
Jan. 23	WAYNESBURG*	8:00
Jan. 26	at Bethany*	4:00
Jan. 30	PITT-TITUSVILLE	8:00
Feb. 2	at Saint Vincent*	6:00
Feb. 6	at Wash. & Jeff.*	8:00
Feb. 9	GENEVA* (Hall of Fame Day)	3:00
Feb. 13	WESTMINSTER*	8:00
Feb. 16	at Thiel*	3:00
Feb. 19-23	Presidents' Athletic Conference Championship Tournament	TBA

*Presidents' Athletic Conference Games
Home Games in CAPS

2012-2013 QUICK FACTS

Location	Grove City, Pa.
Enrollment	2,450
Founded	1876
President	Dr. Richard G. Jewell
Athletic Director	Dr. Don Lyle
AD Phone	724-458-2900
Nickname	Wolverines
Colors	Crimson and White
Home Court	College Arena (1,800)
Conference	Presidents' Athletic
First Season	1898-99
All-Time Won-Lost	1,172-969
Head Coach	Steve Lamie
Alma Mater	Grove City, 1985
Record at Grove City	191-176 (14 years)
Career Record	191-176 (14 years)
Basketball Phone	724-458-3866
Assistant Coach	Sean Severson
Alma Mater	Minnesota-Morris, 2002
2011-2012 Record	11-14
2011-2012 PAC Record	7-9
Last Postseason Berth	2010, NCAA (Lost to Wooster, 63-52)
Conference Championships	7 (1989, 1990, 1991, 1999, 2003, 2007, 2010)
Starters Returning/Lost	3/2
Sports Information Director	R.A. Briggs
Sports Information Phone	724-458-3365
SID E-Mail	rabriggs@gcc.edu
Web Site	www2.gcc.edu/Sports

Administration

President Dr. Richard Jewell	3
Athletic Director Dr. Don Lyle	3

Coaching Staff

Head Coach Steve Lamie	4
Assistant Coach Sean Severson	5

The 2012-2013 Season

2012-2013 Outlook	6
Numerical Roster	7
Team Picture	7

Returners

Steve Battaglia (Olmsted Falls, Ohio)	8
Nate Rambacher (Newmanstown, Pa.)	9
Christian Durbin (Harmony, Pa.)	10
Brian Giesler (Harrisville, Pa.)	10
Mitch Marmelstein (San Juan Capistrano, Calif.)	11
Josh Patterson (McDonald, Pa.)	11
Evan Schell (Pittsburgh, Pa.)	12
J.T. Schwartz (Pittsburgh, Pa.)	12
Ford Reinalda (Dallastown, Pa.)	13

Newcomers

Erik Carlstrom (Bethlehem, Pa.)	13
Brian Metzler (Schwenksville, Pa.)	13
Tyler Patterson (McDonald, Pa.)	14
Mark Pilarski (Gibsonia, Pa.)	14
Isaiah Reeves (Pittsburgh, Pa.)	14
Stephen Tam (Hamilton, Mass.)	15
Joe Vermilya (Sylvania, Ohio)	15
Tim Watts (Bronx, N.Y.)	15

The Presidents' Athletic Conference

About the Presidents' Athletic Conference	16
Conference Opponent Profiles	17

Season Review

2011-2012 Results and Statistics	18
----------------------------------	----

History and Records

Single-Season Leaders	19
Wolverine Record Book	20
The Last Time It Happened	21
Program History	22
Year-By-Year Records	26
All-Time Opponent Series	27
The 1,000-Point Club	28

Grove City College

Grove City College Athletic Hall of Fame	29
About Grove City College	30
Grove City College Athletic Facilities	31

2012-2013 Schedule	Back Cover
--------------------	------------

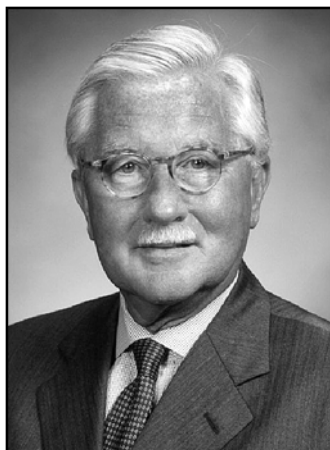
CREDITS

The 2012-2013 Men's Basketball Guide is a production of the Grove City College Sports Information Office. Editor: R.A. Briggs, SID. Editorial assistance by student assistants Erick Locker and Shelby Mander.

Head shots taken by Gregg Studio, Grove City, Pa. Action photography taken by Dave Miller, ADM Photography, Darlington, Pa. Printing by SCP Group, Sharon, Pa.



PRESIDENT RICHARD JEWELL



Dr. Dick Jewell is a 1967 graduate of Grove City College as well as a graduate of the University of Michigan Law School. He begins his 10th year as Grove City College's eighth President.

Prior to joining the College, Jewell had a long private sector career as both a trial and corporate attorney as well as being a shareholder and director of the nation's largest forensic accounting firm.

He also directed the applied research operations of the University of Pittsburgh, reporting to the Chancellor.

Prior to becoming President in September 2003, Jewell had a 40-year relationship with the College as a student, national alumni president and longtime Trustee.

Jewell graduated cum laude from Grove City with high honors in political science.

In addition, he captained the 1967 swimming and diving team and won two Penn-Ohio Conference diving championships.

He served as editor-in-chief of *The Collegian*, the College's newspaper, as well as president of the Student Government Association. He earned Grove City College's Omicron Delta Kappa Senior Man of the Year award in 1967.

Jewell entered the College's Swimming and Diving Hall of Fame in 1989 and received the College's Distinguished Alumni Service Award in 2001.

He first joined the College's Board of Trustees in 1974 and prior to his selection as President, he served on the Executive Committee and chaired the Board's Development Committee.

He also served as co-chairman of the College's capital campaign and as past president of the Alumni Association.

Jewell currently holds faculty rank in the business department as professor of business law and public policy.

A veteran, Jewell served in the U.S. Army from 1969-1971. Jewell and his wife Dayl, a retired PNC Bank vice president, have an adult daughter, Jessica.

ATHLETIC DIRECTOR DON LYLE



Dr. Don Lyle is in his 11th year as athletic director at Grove City College.

Lyle is Chairman of the Department of Physical Education and Athletics and Athletic Director.

In that role, Lyle oversees the College's fitness and wellness program, its newly-developed exercise science major and Grove City's 19-sport varsity athletics program.

Lyle coached Grove City's men's soccer team from 1972 to 2005. As head coach, he led the Wolverines to six post-season berths, including a pair of trips to the NCAA Championship Tournament.

In 2005, his final season as head coach, Lyle guided Grove City to its first-ever outright Presidents' Athletic Conference title and a trip to the finals of the Eastern College Athletic Conference Southern Championship Tournament. He earned the PAC's Coach of the Year award that year.

Lyle also directed Grove City to a share of the PAC men's soccer title in 1996 as Grove City went 16-2. The Wolverines set a school record for victories in a season and won their first ECAC title.

Lyle-coached teams also advanced to post-season play in 1976, 1980 and 2000. In 34 years as head coach, he compiled a 277-206-37 record. The College inducted him into its Men's Soccer Hall of Fame in October 2006.

Lyle also started the women's softball program at Grove City, posting a 91-61 (.599) record from 1980-88 as head coach. He remains the program's all-time wins leader. Lyle then spent nine years as baseball coach at Grove City.

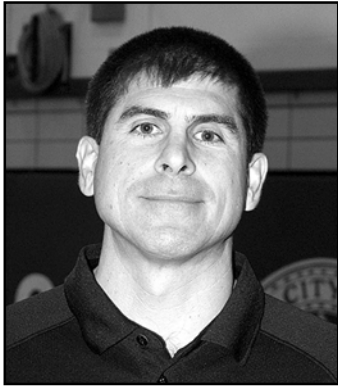
In addition to his academic duties as department chair, Lyle is a professor of physical education. He is also chairman of the Grove City College Athletic Hall of Fame Selection Committee.

A native of Calcutta, Ohio, Lyle earned his bachelor of arts degree from Muskingum College in 1971. He earned his master's degree in education from Miami of Ohio. Lyle received his doctorate from Indiana University of Pennsylvania.

Lyle and his wife Barbara live in Pine Township. They have three adult children and nine grandchildren.



HEAD COACH STEVE LAMIE



A 1985 magna cum laude graduate of Grove City College, Steve Lamie enters his 15th season as the Wolverines' head men's basketball coach.

In his 14 seasons at the College, Lamie has directed the Wolverines to four Presidents' Athletic Conference championships, six postseason berths and national and regional acclaim in numer-

ous statistical categories.

In 2010, he earned the National Association of Basketball Coaches (NABC) Great Lakes Coach of the Year award after directing the Wolverines to a 19-9 record, the PAC title and a berth in the NCAA Division III Championship Tournament.

In 2007, Lamie led Grove City to one of the most improbable championships in PAC history as the Wolverines captured the conference tournament after entering as the fourth seed.

Overall, he has a 191-176 record since taking over as head coach in June 1998.

Lamie guided Grove City to the PAC championship in 2003 as the Wolverines downed Thiel in the conference title game, 60-59, in Greenville.

The 2002-03 Wolverines ranked in the top 10 nationally in both field goal percentage and rebound margin while finishing 18-9, the fifth-best season in school history.

Grove City also hosted its first-ever ECAC playoff game in 2003 as the Wolverines hosted Neumann College in a quarterfinal game.

In 2001-02, the Wolverines finished second in the nation in rebound margin and held their opponents to less than 38 percent shooting from the floor.

Grove City also finished among the national leaders in field goal percentage in 2004-05. Last year, Grove City led the conference in scoring defense.

In his first season, the Wolverines captured the Presidents' Athletic Conference championship and advanced to the ECAC Championship Tournament.

He has also coached six 1,000-point scorers in former standouts Tanner Prosser, Ryan Eller, Shawn Carr, Ryan Gibson, Andy O'Keefe and Brett Matson.

O'Keefe also earned CoSIDA Academic All-America honors in 2010. Three Grove City players have earned Academic All-District during his tenure.

Lamie is the 21st head men's basketball coach in Grove City history. Prior to becoming head coach, he assisted longtime head coach John Barr for four seasons.

The Wolverines won 16 games in consecutive seasons and reached the ECAC tournament in each of Lamie's first two years as an assistant.

Lamie played four years under Barr, earning the team's hustle award and co-captain honors as a senior.

As a sophomore during the 1982-83 season, he helped Grove City advance to the NCAA Division III Championship Tournament as the Wolverines set a school record with 21 victories.

His coaching career began as an assistant at Cedar Crest High School in Lebanon, Pa. After four seasons at Cedar Crest, Lamie spent two years as a graduate assistant at Kent State, earning his master's degree in biology in 1991.

Lamie then returned to the high school ranks for three seasons as a head coach. After one year at Palisades High School in Kintersville, Pa., Lamie led Perkasio, Pa.-based Pennridge High School to the District I playoffs in 1994, ending a six-year drought.

Lamie is an assistant professor of physical education and exercise science.

His wife Melissa recently completed her 20th season as Grove City's head women's soccer coach. She is also Grove City's head golf coach.

The Lamies reside in Pine Township with their daughter, Melia, 12, and infant twins Caleb and Rayna.

STEVE LAMIE YEAR-BY-YEAR

Year	Record	Notable
1998-99	16-9	PAC Championship ECAC Quarterfinals
1999-2000	11-14	PAC Runner-Up
2000-01	13-11	
2001-02	17-10	Won West Penn Classic; Howard Johnson Classic
2002-03	18-9	PAC Championship ECAC Quarterfinals
2003-04	14-13	7-3 PAC Record, Tanner Prosser 1,000 Pts Ryan Eller 1,000 Points
2004-05	13-12	
2005-06	9-17	
2006-07	16-13	PAC Championship ECAC Quarterfinals
2007-08	17-11	PAC Reg. Season Champs ECAC Quarterfinals
2008-09	12-13	ECAC Quarterfinals; Ryan Gibson 1,000 Points
2009-10	19-9	PAC Championship NCAA Tournament
2010-11	5-21	Andy O'Keefe 1,000 Points Top PAC scoring defense
2011-12	11-14	Brett Matson 1,000 Points
Total	191-176	

COACHING STAFF



ASSISTANT COACH SEAN SEVERSON



Sean Severson is in his ninth season as the assistant men's basketball coach at Grove City College.

As the top aide to head coach Steve Lamie, Severson is heavily involved in opponent scouting, practice planning, player development and recruiting.

He has helped Grove City capture two Presidents' Athletic Conference titles and four postseason berths since coming to campus.

Severson joined the Grove City staff during the summer of 2004 after working as a graduate assistant at Adams State College in Alamosa, Colorado for two seasons.

While at Adams State, Severson worked as an assistant men's basketball coach as well as a graduate assistant athletic trainer.

A native of Menomonee Falls, Wis., Severson earned a bachelor of arts degree in athletic training from the University of Minnesota-Morris in May 2002.

At Minnesota-Morris, Severson captained the basketball team and earned Academic All-Conference recognition from the Northern Sun Conference three times. He also earned Dean's List honors at Minnesota-Morris.

Severson earned his master's degree in health, physical education and recreation in 2004 from Adams State.

He is also the head cross country coach and an assistant professor of physical education at Grove City.

Grove City's women's cross country team has won Presidents' Athletic Conference titles in each of his nine seasons as coach.

The women's team earned its first-ever trip to the NCAA Championships in fall 2010. In 2011, he guided the women to a fifth-place finish at the NCAA Midwest Regional Championships.

Grove City's men have won six cross country crowns in seven years. He earned the PAC's women's cross country Coach of the Year award in 2004, 2005, 2007 and 2010.

A Grove City runner has qualified for the NCAA Division III Championships in seven of his nine seasons under Severson's guidance, including two-time All-American Elisa Pedersen and 2007 NCAA All-American Kristen Carter.

Severson lives in Grove City with his wife, Tara, and their four daughters.

ADMINISTRATION/TEAM STAFF



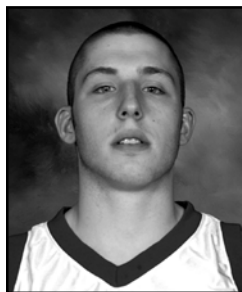
Susan Roberts
Associate Athletic Director



Kay Mitchell Emigh
Head Athletic Trainer



Rick Hawke
Assistant Athletic Trainer



Ryan Eller
Volunteer Assistant Coach



Erick Locker
Team Manager/Student Assistant

SEASON PREVIEW

The 2011-12 season proved to be a great learning experience for the Grove City College men's basketball team.

Although the Wolverines fielded the youngest squad in recent program history, Grove City still featured a six-win improvement that included several notable victories.

This winter, a seasoned - but still very young - Wolverine squad will look to return to the Presidents' Athletic Conference's elite.

Grove City has just two seniors and one junior on its roster. However, eight total letterwinners return, including five current sophomores who lettered as rookies.

Both of Grove City's seniors are in the frontcourt in 6-foot-4 forward Nate Rambacher and 6-3 forward Steve Battaglia.

Rambacher started 17 games as a junior and led the team in blocked shots. A two-year letterman, he also shot 50 percent from the field during the 2011-12 season.

Battaglia started one game as a junior and is looking to fully bounce back from injury. Battaglia played in 16 games last year and is shooting 65 percent from the field for his career.

Junior guard Evan Schell will look to break into the lineup this year after playing as a reserve in each of his first two seasons. A sharp-shooting lefty, Schell played in 12 games last year after making 22 appearances during the 2010-11 season.

Sophomore guard Mitch Marmelstein emerged during his freshman season and led Grove City with 44 three-point goals. He started 24 games last year and finished third on the team in scoring at 11.5 points per game. He will likely be counted on for offensive production again.



Sophomore guard J.T. Schwartz returns after earning a starting spot as a freshman in 2011-12.



Sophomore guard Mitch Marmelstein fired in 44 three-point goals last year and is a returning starter for Grove City.

Sophomores Christian Durbin and J.T. Schwartz both return at point guard after playing extensively as freshmen. Durbin recorded 63 assists in 25 games and averaged 5.9 points per game.

Schwartz, meanwhile, averaged seven points per game and ranked second on the team with 48 steals. He also had 63 assists in 25 games.

Both men are expected to contend for spots in the starting lineup after splitting time as freshmen.

Sophomore Josh Patterson started three games as a freshman and appeared in all 25 games. He quickly emerged as one of the Wolverines' top defensive players and will likely be a defensive stopper this winter.

Forward Brian Giesler appeared in all 25 games as a freshman and will battle for a starting spot in the frontcourt. He brings scoring punch to both forward positions.

Sophomore forward Ford Reinalda saw limited action as a freshman but is also expected to push for time in the frontcourt. The 6-4 Reinalda appeared in seven games as a rookie.

Head coach Steve Lamie, now in his 15th season, will also look to several freshmen throughout the course of the season.

THE 2012-2013 WOLVERINES

Numerical Roster

No.	Name	Yr.	Pos.	Ht.	Hometown (High School)
3	Christian Durbin*	So.	G	5-7	Harmony, Pa. (Seneca Valley)
5	Stephen Tam	Fr.	G	5-11	Hamilton, Mass. (Hamilton-Wenham)
10	J.T. Schwartz*	So.	G	5-8	Pittsburgh, Pa. (Shaler)
12	Evan Schell	Jr.	G	6-0	Pittsburgh, Pa. (Oliver)
14	Josh Patterson*	So.	G	6-0	McDonald, Pa. (South Fayette)
20	Joe Vermilya	Fr.	G	6-1	Sylvania, Ohio (Southview)
22	Mitch Marmelstein*	So.	G	6-0	San Juan Capistrano, Calif. (St. Margaret's)
24	Isaiah Reeves	Fr.	G	6-0	Pittsburgh, Pa. (Perry)
25	Tyler Patterson	Fr.	F	6-2	McDonald, Pa. (South Fayette)
30	Tim Watts	Fr.	G	5-11	Bronx, N.Y. (H.S. of American Studies)
33	Brian Metzler	Fr.	F	6-3	Schwenksville, Pa. (Episcopal Academy)
35	Brian Giesler*	So.	F	6-3	Harrisville, Pa. (Slippery Rock)
40	Steve Battaglia**	Sr.	F	6-3	Olmsted Falls, Ohio (Olmsted Falls)
42	Nate Rambacher**	Sr.	F	6-4	Newmanstown, Pa. (Eastern Lebanon)
44	Ford Reinalda	So.	F	6-4	Dallastown, Pa. (Dallastown)
50	Mark Pilarski	Fr.	C	6-6	Gibsonia, Pa. (Hampton)
52	Erik Carlstrom	Fr.	C	6-6	Bethlehem, Pa. (Liberty)

*-letters earned

Head Coach: Steve Lamie

Assistant Coaches: Sean Severson and Ryan Eller

Team Captains: Steve Battaglia and Nate Rambacher



The 2012-2013 Wolverines

Front Row: Stephen Tam, J.T. Schwartz, Steve Battaglia, Nate Rambacher, Christian Durbin, Tim Watts and Josh Patterson. **Back Row:** Head coach Steve Lamie, Isaiah Reeves, Evan Schell, Brian Giesler, Ford Reinalda, Mark Pilarski, Eric Carlstrom, Brian Metzler, Tyler Patterson, Mitch Marmelstein, Joe Vermilya, manager Josh Eberly and assistant coach Sean Severson.



Steve Battaglia

6-3 • 200 • SENIOR • FORWARD
 OLMSTED FALLS, OHIO
 OLMSTED FALLS HIGH SCHOOL

Fourth-year player who will battle for starting spot in frontcourt ... Can play both forward spots ... Returning letterman ... Team co-captain.

AS A JUNIOR IN 2011-2012

Earned second letter ... Appeared in 16 games, including one start ... Solidified role as one of Grove City's top frontcourt players ... Shot 67 percent from field.

AS A SOPHOMORE IN 2010-2011

Earned first letter ... Played in 19 games, including two starts ... Played 26 minutes in first career start February 9, 2011 against Thiel ... Scored 11 points in regular season finale against Westminster February 19 ... Started conference tournament quarterfinal at Saint Vincent February 22 ... Led team in field goal percentage.

AS A FRESHMAN IN 2009-2010

Played in 12 games as a reserve forward ... Did not miss a shot from the floor ... Scored five points in win at Thomas More January 23, 2010 ... Member of conference title team that advanced to NCAA Championship Tournament.

HIGH SCHOOL

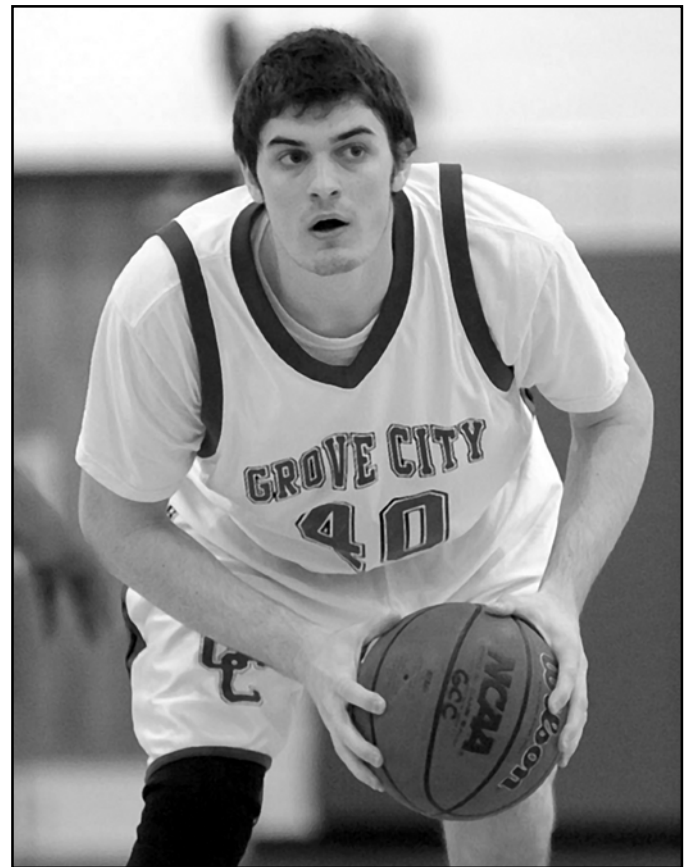
Two-year letterman ... Earned First Team All-Conference.

GAME HIGHS

11 points (vs. Westminster, Feb. 19, 2011); 4 rebounds (twice); 2 assists (at Slippery Rock, Dec. 30, 2010); 1 steal (5 times); 26 minutes (at Thiel, Feb. 9, 2011).

NOTABLE

History major.



BATTAGLIA'S CAREER STATISTICS

Year	GP-GS	FG	FGA	PCT	3FG	3FGA	PCT	FT	FTA	PCT	REB	RPG	AST	APG	PTS	PPG
2009-2010	12-0	7	7	1.000	0	0	.000	2	7	.286	8	0.6	1	0.1	16	1.3
2010-2011	19-2	21	36	.583	0	1	.000	12	19	.632	26	1.4	7	0.4	54	2.8
2011-2012	16-1	8	12	.667	0	0	.000	3	8	.375	15	0.9	2	0.1	19	1.2
Totals	47-3	36	55	.655	0	1	.000	17	34	.500	49	1.0	10	0.2	89	1.9



Nate Rambacher

**6-4 • 195 • SENIOR • FORWARD
NEWMANSTOWN, PENNSYLVANIA
EASTERN LEBANON HIGH SCHOOL**

Two-year letterman at power forward ... Returning starter who provides rebounding and interior defense ... Team co-captain.

AS A JUNIOR IN 2011-2012

Played in 23 games, earning second letter ... Started 17 games ... Led team with nine blocked shots ... Third on team in rebounds and fourth in steals ... Grabbed career-high nine rebounds against Washington & Jefferson January 11, 2012.

AS A SOPHOMORE IN 2010-2011

Played in all 26 games, earning first letter ... Made 12 starts, including each of the final 11 regular season games ... Led team with 18 blocked shots ... Had 13 points and three blocks at Mount Aloysius February 2, 2011 ... Made first start December 11, 2010 against Waynesburg.

AS A FRESHMAN IN 2009-2010

Played in 10 games as a freshman ... Made collegiate debut at Juniata November 21, 2009 ... Member of Presidents' Athletic Conference championship squad.

HIGH SCHOOL

Three-year letterman at Eastern Lebanon County ... First Team All-Conference and Team MVP as a senior.

GAME HIGHS

13 points (at Mount Aloysius, Feb. 2, 2011); 9 rebounds (vs. Wash. & Jeff., Jan. 11, 2012); 3 assists (3 times); 3 steals (vs. Geneva, Dec. 10, 2011); 38 minutes (twice).

NOTABLE

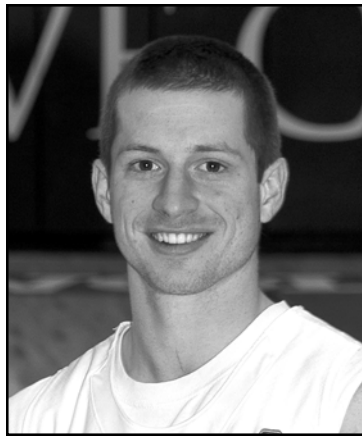
Biology major.



RAMBACHER'S CAREER STATISTICS

Year	GP-GS	FG	FGA	PCT	3FG	3FGA	PCT	FT	FTA	PCT	REB	RPG	AST	APG	PTS	PPG
2009-2010	10-0	0	0	.000	0	0	.000	2	2	1.000	3	0.3	1	0.1	2	0.2
2010-2011	26-12	28	65	.431	0	2	.000	12	18	.667	56	2.2	10	0.4	68	2.6
2011-2012	23-17	32	64	.500	0	3	.000	21	37	.568	83	3.6	24	1.0	85	3.7
Totals	59-29	60	129	.465	0	5	.000	36	57	.632	142	2.4	35	0.6	155	2.6





Christian Durbin

5-7 • 150 • SOPHOMORE • GUARD
HARMONY, PENNSYLVANIA
SENECA VALLEY HIGH SCHOOL

Returning letterwinner who will look to earn starting spot in Grove City backcourt this year.

11, 2012); 27 minutes (vs. Kenyon, Nov. 22, 2011).

AS A FRESHMAN IN 2011-2012

Played in all 25 games, earning first letter ... Made first start December 3, 2011 at Thomas More.

HIGH SCHOOL
 Earned four letters at Class AAAA Seneca Valley High School.

NOTABLE

Undecided major ... Older brother Brandon played second base for Grove City baseball team from 2009 to 2012, earning four letters.

GAME HIGHS

14 points (at Bethany, Jan. 21, 2012); 5 rebounds (vs. Thiel, Jan. 18, 2012); 7 assists (at Washington & Jefferson, Feb.

DURBIN'S CAREER STATISTICS

Year	GP-GS	FG	FGA	PCT	3FG	3FGA	PCT	FT	FTA	PCT	REB	RPG	AST	APG	PTS	PPG
2011-2012	25-2	50	142	.352	12	45	.267	36	48	.750	47	1.9	63	2.5	148	5.9
Totals	25-2	50	142	.352	12	45	.267	36	48	.750	47	1.9	63	2.5	148	5.9



Brian Giesler

6-3 • 210 • SOPHOMORE • FORWARD
HARRISVILLE, PENNSYLVANIA
SLIPPERY ROCK HIGH SCHOOL

Second-year forward who will compete for time in Wolverine frontcourt this season ... Brings perimeter scoring punch to position.

played for 2005 Grove City College grad Phil Bushre ... 1,000-point scorer ... Two-time All-Region selection.

AS A FRESHMAN IN 2011-2012

Appeared in all 25 games as a reserve, earning first letter ... Fourth on team with 15 three-point goals

GAME HIGHS
 12 points (at Penn State Beaver, Jan.7, 2012); 3 rebounds (5 times); 1 assist (4 times), 15 minutes (at Bethany, Jan. 21, 2012).

HIGH SCHOOL

Earned four letters at nearby Slippery Rock High, where he

NOTABLE
 Undecided major.

GIESLER'S CAREER STATISTICS

Year	GP-GS	FG	FGA	PCT	3FG	3FGA	PCT	FT	FTA	PCT	REB	RPG	AST	APG	PTS	PPG
2011-2012	25-0	33	82	.402	15	51	.294	4	8	.500	29	1.2	4	0.2	85	3.4
Totals	25-0	33	82	.402	15	51	.294	4	8	.500	29	1.2	4	0.2	85	3.4

THE 2012-2013 WOLVERINES





Mitch Marmelstein

6-0 • 195 • SOPHOMORE • GUARD
SAN JUAN CAPISTRANO, CALIFORNIA
ST. MARGARET'S HIGH SCHOOL

Returning starter in backcourt who will likely be key offensive contributor again in 2012-13 season.

AS A FRESHMAN IN 2011-2012

Started 24 games, earning first letter ... Averaged 22 points per game over final four regular season games ... Led team with 44 three-point goals ... Led team in foul shooting.

HIGH SCHOOL

Named Academy League Most Valuable Player as a senior

... First Team All-CIF Division ... Averaged 21 points, 10 rebounds per game as a senior ... Three-year letterman.

GAME HIGHS

27 points (at Geneva, Feb. 1, 2012); 7 rebounds (at Thomas More, Dec. 3, 2011); 3 assists (4 times); 2 steals (5 times); 35 minutes (at Westminster, Jan. 4, 2012).

NOTABLE

Exercise science major.

MARMELSTEIN'S CAREER STATISTICS

Year	GP-GS	FG	FGA	PCT	3FG	3FGA	PCT	FT	FTA	PCT	REB	RPG	AST	APG	PTS	PPG
2011-2012	24-24	93	209	.445	44	110	.400	47	56	.839	85	3.5	33	1.4	277	11.5
Totals	24-24	93	209	.445	44	110	.400	47	56	.839	85	3.5	33	1.4	277	11.5



Josh Patterson

6-0 • 170 • SOPHOMORE • GUARD
MCDONALD, PENNSYLVANIA
SOUTH FAYETTE HIGH SCHOOL

Returning letterman who will look to earn full-time starting position ... Will be used as a defensive stopper.

AS A FRESHMAN IN 2011-2012

Played in all 25 games, earning first letter ... Made first start at Westminster January 4, 2012 ... Team went 3-0 in his three starts.

HIGH SCHOOL

Four-year letterman ... Member of 2010 Class AA state title team ... Helped Lions to Class AAA state semifinals in 2011.

GAME HIGHS

9 points (at Waynesburg, Jan. 14, 2012); 5 rebounds (twice); 3 assists (at Westminster, Jan. 4, 2012); 1 steal (8 times); 28 minutes (vs. Westminster, Feb. 4, 2012).

NOTABLE

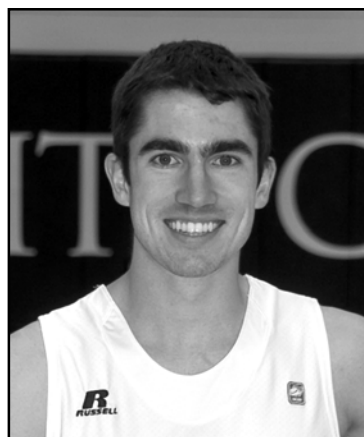
Elementary/special education major ... Older brothers Mike (2001-04) and Zack (2009-11) Patterson played defensive end for Grove City College football team ... Younger brother Tyler is freshman forward on Grove City basketball team.

PATTERSON'S CAREER STATISTICS

Year	GP-GS	FG	FGA	PCT	3FG	3FGA	PCT	FT	FTA	PCT	REB	RPG	AST	APG	PTS	PPG
2011-2012	25-3	21	50	.420	4	13	.308	2	8	.250	39	1.6	16	0.6	48	1.9
Totals	25-3	21	50	.420	4	13	.308	2	8	.250	39	1.6	16	0.6	48	1.9

THE 2012-2013 WOLVERINES





Evan Schell

6-0 • 170 • JUNIOR • GUARD
PITTSBURGH, PENNSYLVANIA
OLIVER HIGH SCHOOL

Third-year veteran who will compete for spot in backcourt rotation this season.

AS A SOPHOMORE IN 2011-2012

Played in 12 games as a reserve ... Scored in five of his appearances.

AS A FRESHMAN IN 2010-2011

Appeared in 22 games ... Made first start January 15, 2011 against Saint Vincent.

HIGH SCHOOL

Led Oliver to 20-6 overall record and berth in PIAA Class AAA playoffs as senior.

GAME HIGHS

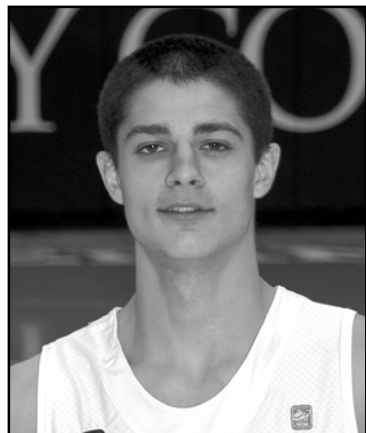
15 points (at Geneva, Jan. 12, 2011); 4 rebounds (at Bethany, Jan., 21, 2012); 1 assist (twice); 1 steal (7 times); 28 minutes (vs. Bethany, Feb. 5, 2011).

NOTABLE

Marketing management major.

SHELL'S CAREER STATISTICS

Year	GP-GS	FG	FGA	PCT	3FG	3FGA	PCT	FT	FTA	PCT	REB	RPG	AST	APG	PTS	PPG
2010-2011	22-1	18	59	.305	11	33	.333	11	12	.917	26	1.2	1	0.1	58	2.6
2011-2012	12-0	5	16	.313	3	9	.333	3	4	.750	10	0.8	1	0.1	16	1.3
Totals	34-1	23	75	.307	14	42	.333	14	16	.875	36	1.1	2	0.4	74	2.2



J.T. Schwartz

5-8 • 155 • SOPHOMORE • GUARD
PITTSBURGH, PENNSYLVANIA
SHALER HIGH SCHOOL

Returning starter at point guard ... Will be key contributor to backcourt at both ends of the floor.

AS A FRESHMAN IN 2011-2012

Started 22 games as rookie, earning first letter ... Made debut with 14-point outing at Penn State Altoona November 16, 2011 ... Second on team in assists, fourth in scoring.

HIGH SCHOOL

Earned four letters at Shaler ... Led Titans to Section 3-

GAME HIGHS

14 points (at Penn State Altoona, Nov. 16, 2011); 7 rebounds (at Saint Vincent, Dec. 7, 2011); 6 assists (twice); 6 steals (vs. Saint Vincent, Jan. 28, 2012); 32 minutes (twice).

NOTABLE

Marketing management major.

SCHWARTZ'S CAREER STATISTICS

Year	GP-GS	FG	FGA	PCT	3FG	3FGA	PCT	FT	FTA	PCT	REB	RPG	AST	APG	PTS	PPG
2011-2012	25-22	64	169	.379	19	65	.292	27	38	.711	85	3.4	63	2.5	174	7.0
Totals	25-22	64	169	.379	19	65	.292	27	38	.711	85	3.4	63	2.5	174	7.0





Ford Reinalda

6-4 • 205 • SOPHOMORE • FORWARD
DALLASTOWN, PENNSYLVANIA
DALLASTOWN HIGH SCHOOL

Second-year post player who will challenge for time in Wolverine frontcourt this year.

County ... Helped Dallastown to 21-8 record and berth in Class AAAA state playoffs as a senior.

AS A FRESHMAN IN 2011-2012

Played in seven games as a reserve ... Scored first collegiate basket in win over Waynesburg February 15, 2012.

GAME HIGHS

2 points (vs. Waynesburg, Feb. 15, 2012); 1 rebound (3 times); 6 minutes (at Thomas More, Dec. 3, 2011).

HIGH SCHOOL

Earned three letters at Dallastown High School in York

NOTABLE

Mechanical engineering major.

REINALDA'S CAREER STATISTICS

Year	GP-GS	FG	FGA	PCT	3FG	3FGA	PCT	FT	FTA	PCT	REB	RPG	AST	APG	PTS	PPG
2011-2012	7-0	1	6	.167	0	1	.000	0	1	.000	3	0.4	0	0.0	2	0.3
Totals	7-0	1	6	.167	0	1	.000	0	1	.000	3	0.4	0	0.0	2	0.3



Erik Carlstrom

6-6 • 195 • FRESHMAN • CENTER
BETHLEHEM, PENNSYLVANIA
LIBERTY HIGH SCHOOL

Rangy center who will look to bolster Grove City up front this winter.

HIGH SCHOOL

Earned two letters at Class AAAA Liberty ... Helped team advance to District 11 finals and second round of state tournament in 2011.

NOTABLE

Mechanical engineering major.



Brian Metzler

6-3 • 195 • FRESHMAN • FORWARD
SCHWENKSVILLE, PENNSYLVANIA
THE EPISCOPAL ACADEMY

Freshman forward who could see time at several positions on the perimeter and inside this year.

HIGH SCHOOL

Twice named to Inter-Academic League's Second Team ... named Main Line Athlete of the Week.

NOTABLE

Finance major.





25
Tyler Patterson

6-2 • 200 • FRESHMAN • FORWARD
MCDONALD, PENNSYLVANIA
SOUTH FAYETTE HIGH SCHOOL

Freshman forward who will battle for time up front this year for Grove City.

HIGH SCHOOL

Member of Class AA state championship team at South Fayette as a sophomore in 2010 ... Helped Lions reach Class AAA state semifinals in 2011.

NOTABLE

Mathematics major ... Younger brother of sophomore guard Josh Patterson ... Older brothers Mike (2001-04) and Zack (2009-11) Patterson played defensive end for Grove City football team.



50
Mark Pilarski

6-6 • 220 • FRESHMAN • CENTER
GIBSONIA, PENNSYLVANIA
HAMPTON HIGH SCHOOL

First-year post player who will look to bolster Grove City up front this season.

HIGH SCHOOL

Helped Hampton advance to 24-5 record and Class AAA state semifinals as senior ... Member of WPIAL Class AAA runner-up squad.

NOTABLE

Physics major.



24
Isaiah Reeves

6-0 • 150 • FRESHMAN • GUARD
PITTSBURGH, PENNSYLVANIA
PERRY TRADITIONAL ACADEMY

First-year player who will contend for time in Grove City's backcourt rotation.

HIGH SCHOOL

Played at Perry Traditional Academy, a Class AAA program in Pittsburgh City League.

NOTABLE

Exercise science major.





Stephen Tam

**5-11 • 160 • FRESHMAN • GUARD
HAMILTON, MASSACHUSETTS
HAMILTON-WENHAM HIGH SCHOOL**

Backcourt newcomer who will look to break into Grove City guard rotation this winter.

HIGH SCHOOL

Helped Hamilton-Wenham to 14-6 record as a senior ... Led Generals in scoring as a junior ... Named Cape Ann League Division 2 Player of Year in 2011 ... Member of three conference title teams.

NOTABLE

Computer information systems major.



Joe Vermilya

**6-1 • 185 • FRESHMAN • GUARD
SYLVANIA, OHIO
SOUTHVIEW HIGH SCHOOL**

Newcomer who will challenge for time in Grove City backcourt.

HIGH SCHOOL

Helped lead Sylvania Southview to OHSAA Division I district finals as a senior in 2012.

NOTABLE

Finance major.



Tim Watts

**5-11 • 185 • FRESHMAN • GUARD
BRONX, NEW YORK
HIGH SCHOOL OF AMERICAN STUDIES**

First-year player who will look to break into Wolverine guard rotation.

HIGH SCHOOL

Helped American Studies to 13-5 record in Bronx B West conference as a senior and 14-6 overall mark.

NOTABLE

Exercise science major.



ABOUT THE PAC

PRESIDENTS' ATHLETIC CONFERENCE

Founded in 1955, the Presidents' Athletic Conference continues its mission of promoting intercollegiate athletics and the pursuit of academic excellence.

Comprised of 10 select private colleges - Bethany College, Chatham University, Geneva College, Grove City College, Saint Vincent College, Thiel College, Thomas More College, Washington & Jefferson College, Waynesburg University and Westminster College - the PAC remains a unique organization in this day of high-pressure intercollegiate athletics.

With academics at the center of each member's philosophy, the PAC is built on the principle that an athletic program is a part of college life, but not an entity in itself.

During the 2005-06 academic year, Chatham, Geneva and Saint Vincent all joined the PAC. Chatham competed for PAC championships for the first time during the 2007-08 academic year.

Saint Vincent first competed for conference titles in 2010-11. Geneva became eligible for conference titles in 2011-12.

The PAC annually crowns champions in 19 sports. All-Conference status is awarded in all 19 sports. Head coaches select all-league squads for all team sports, while in individual sports such as cross country and tennis, all-PAC accolades are based upon performances at the conference championships.

The PAC annually awards its men's and women's All-Sports Trophies to the schools which perform best across the board in conference competition.

W&J won the Men's All-Sports Trophy in 2011-12 and Westminster won the Women's All-Sports Trophy. Grove City finished second with 114 total All-Sports points.

In 2011-12, the league named 734 student-athletes to the PAC Academic Honor Roll, which recognizes all participating student-athletes who attain a term grade-point average of 3.60 or above.

2011-2012 PAC Champions

Baseball _____	Westminster
Men's Basketball _____	Bethany
Women's Basketball _____	Thomas More
Men's Cross Country _____	Saint Vincent
Women's Cross Country _____	Grove City
Football _____	Thomas More
Men's Golf _____	Wash. & Jeff.
Women's Golf _____	Westminster
Men's Soccer _____	Thomas More
Women's Soccer _____	Thomas More
Women's Softball _____	Geneva
Men's Swimming _____	Grove City
Women's Swimming _____	Grove City
Men's Tennis _____	Grove City
Women's Tennis _____	Grove City
Men's Track and Field _____	Westminster
Women's Track and Field _____	Westminster
Women's Volleyball _____	Geneva
Wrestling _____	Thiel

2011-2012 FINAL STANDINGS

	PAC		Overall	
	W	L	W	L
Bethany	14	2	25	4
Thomas More	13	3	20	8
Thiel	13	3	16	8
Saint Vincent	11	5	19	8
Grove City	7	9	11	14
Geneva	5	11	6	20
Washington & Jefferson	4	12	9	18
Westminster	4	12	6	20
Waynesburg	1	15	5	22

PAC FIRST TEAM

G	Devon Adams	Thiel
G	Blair Rozenblad	Thiel
F	British Alexander	Bethany
F	Phil Feinberg	Thomas More
F	Nick Wilcox	Bethany

PAC SECOND TEAM

G	BRETT MATSON	GROVE CITY
G	Dennis Bassich	Saint Vincent
G	Zach Bellhy	Washington & Jefferson
G	Reece Mabery	Bethany
C	Colt Stafford	Thomas More

TEAM SCORING OFFENSE

	G	PTS	AVG
Thomas More	28	2106	75.2
Bethany	29	2163	74.6
Thiel	24	1749	72.9
Saint Vincent	27	1958	72.5
Westminster	26	1782	68.5
Grove City	25	1692	67.7
Geneva	26	1733	66.7
Wash. & Jeff.	27	1771	65.6
Waynesburg	27	1605	59.4

TEAM SCORING DEFENSE

	G	PTS	AVG
Bethany	29	1767	60.9
Saint Vincent	27	1687	62.5
Thiel	24	1635	68.1
Thomas More	28	1916	68.4
Grove City	25	1719	68.8
Waynesburg	27	1914	70.9
Wash. & Jeff.	27	1991	73.7
Geneva	26	1975	76.0
Westminster	26	2012	77.4

INDIVIDUAL SCORING

	G	PTS	AVG
Zach Bellhy, Wash. & Jeff.	26	500	19.2
Dennis Bassich, Saint Vincent	27	451	16.7
Matt Lorello, Geneva	26	408	15.7
Blair Rozenblad, Thiel	22	342	15.5
Dave Phillips, Geneva	26	393	15.1

INDIVIDUAL REBOUNDS

	G	REB	AVG
Blair Rozenblad, Thiel	22	242	11.0
British Alexander, Bethany	26	216	8.3
Phil Feinberg, Thomas More	28	226	8.1
Nick Wilcox, Bethany	29	229	7.9
Colt Stafford, Thomas More	28	196	7.0



CONFERENCE PROFILES

Bethany



Andrew Sachs

Location: Bethany, W. Va.
Nickname: Bison
Colors: Kelly Green and White
Head Coach: Andrew Sachs
Career Record: 65-21 (4th year)
2011-12 Record: 25-4
PAC Record/Finish: 14-2 (1st)
SID: Brian Rose
Phone: 304-829-7292

Geneva



Jeff Santarsiero

Location: Beaver Falls, Pa.
Nickname: Golden Tornadoes
Colors: Black and Gold
Head Coach: Jeff Santarsiero
Career Record: 228-198 (23rd year)
2011-12 Record: 6-20
PAC Record/Finish: 5-11 (6th)
SID: Van Zanic
Phone: 724-847-6886

Saint Vincent



D.P. Harris

Location: Latrobe, Pa.
Nickname: Bearcats
Colors: Green and Yellow
Head Coach: D.P. Harris
Career Record: 164-58 (10th year)
2011-12 Record: 19-8
PAC Record/Finish: 11-5 (4th)
SID: Jeff Zidek
Phone: 724-805-2476

Thiel



Tim Loomis

Location: Greenville, Pa.
Nickname: Tomcats
Colors: Navy Blue and Gold
Head Coach: Tim Loomis
Career Record: 207-268 (18 years; 7th year at Thiel)
2011-12 Record: 16-8
PAC Record/Finish: 13-3 (3rd)
SID: Kevin Fenstermacher
Phone: 724-589-2187

Thomas More



Jeff Rogers

Location: Crestview Hills, Ky.
Nickname: Saints
Colors: Blue and Silver
Head Coach: Jeff Rogers
Career Record: 54-29 (4th year)
2011-12 Record: 20-8
PAC Record/Finish: 13-3 (2nd)
SID: Cory Blackson
Phone: 859-344-3672

Washington & Jefferson



Glenn Gutierrez

Location: Washington, Pa.
Nickname: Presidents
Colors: Red and Black
Head Coach: Glenn Gutierrez
Career Record: 80-86 (7th year)
2011-12 Record: 9-18
PAC Record/Finish: 4-12 (7th)
SID: Scott D. McGuinness
Phone: 724-250-3308

Waynesburg



Mark Christner

Location: Waynesburg, Pa.
Nickname: Yellow Jackets
Colors: Orange and White
Head Coach: Mark Christner
Career Record: 11-42 (3rd year)
2011-12 Record: 5-22
PAC Record/Finish: 1-15 (9th)
SID: Bobby Fox
Phone: 724-852-3334

Westminster



Kevin Siroki

Location: New Wilmington, Pa.
Nickname: Titans
Colors: Blue and White
Head Coach: Kevin Siroki
Career Record: 0-0 (First Year)
2011-12 Record: 6-20
PAC Record/Finish: 4-12 (8th)
SID: Nathan Lariccia
Phone: 724-946-6357

2011-2012 REVIEW

Overall Record: 11-14

Presidents' Athletic Conference Record: 7-9

GAME-BY-GAME RESULTS

Date	Opponent	Score	W/L	High Scorer	High Rebounder
Nov. 16	at Penn State Altoona	94-71	W	(14) Verderber/Schwartz	(7) Christian Locher
Nov. 18	Mount Union\$	71-64 (OT)	L	(10) Marmelstein/Locher	(7) Verderber/Rambacher
Nov. 19	Pitt-Greensburg\$	59-58	W	(14) Kris Verderber	(8) Rambacher/Matson
Nov. 22	KENYON	84-75 (OT)	W	(20) Kris Verderber	(9) Brett Matson
Nov. 30	BETHANY*	67-63	L	(24) Mitch Marmelstein	(7) Kris Verderber
Dec. 3	at Thomas More*	68-55	L	(10) Brett Matson	(7) Mitch Marmelstein
Dec. 7	at Saint Vincent*	58-54	W	(11) Kris Verderber	(8) Brett Matson
Dec. 10	GENEVA*	64-60	L	(12) Kris Verderber	(9) Brett Matson
Dec. 14	at Hiram	92-64	L	(16) Mitch Marmelstein	(5) Josh Patterson
Dec. 29	Muskingum#	75-59	W	(22) Brett Matson	(6) Mitch Marmelstein
Dec. 30	at Bluffton#	87-68	L	(13) Matson/Durbin	(10) Brett Matson
Jan. 4	at Westminster*	69-66	W	(20) Brett Matson	(6) Matson/Verderber
Jan. 7	at Penn State Beaver	64-62	L	(13) Brett Matson	(6) Kris Verderber
Jan. 11	WASH. & JEFF.*	67-66	L	(23) Mitch Marmelstein	(9) Nate Rambacher
Jan. 14	at Waynesburg*	56-53	W	(15) Kris Verderber	(9) Brett Matson
Jan. 18	THIEL*	56-49	L	(19) Brett Matson	(8) Brett Matson
Jan. 21	at Bethany*	78-57	L	(14) Christian Durbin	(5) Matson/Patterson
Jan. 25	THOMAS MORE*	73-65	L	(19) Brett Matson	(9) Brett Matson
Jan. 28	SAINT VINCENT*	62-57	L	(19) Brett Matson	(9) Brett Matson
Feb. 1	at Geneva*	76-74	W	(27) Mitch Marmelstein	(6) Brett Matson
Feb. 4	WESTMINSTER*	80-78	W	(26) Mitch Marmelstein	(8) Brett Matson
Feb. 11	at Wash. & Jeff.*	87-67	W	(23) Kris Verderber	(10) Brett Matson
Feb. 15	WAYNESBURG*	82-64	W	(24) Brett Matson	(11) Brett Matson
Feb. 18	at Thiel*	80-78	L	(20) Mitch Marmelstein	(8) Brett Matson
Feb. 21	at Saint Vincent%	71-64	L	(23) Brett Matson	(7) Kris Verderber

\$-Geneva College Coaches vs. Cancer Tournament

#-McDonald's of Bluffton Tournament

*-Presidents' Athletic Conference Game

%-Presidents' Athletic Conference Tournament

Home Games in CAPS

INDIVIDUAL AND TEAM STATISTICS

NAME	GP-GS	/-----TOTAL-----/		/-----3PT-----/		FT-FTA	FT%	PTS	AVG	OFF REB	DEF REB	TOT REB	AVG	AST	TO	BLK	STL
		FG-FGA	FG%	FG-FGA	FG%												
Brett Matson	25-25	111-254	.437	35-98	.357	70-90	.778	327	13.1	22	143	165	6.6	85	56	1	52
Kris Verderber	25-25	134-253	.530	0-0	.000	43-53	.811	311	12.4	33	62	95	3.8	27	41	7	4
Mitch Marmelstein	24-24	93-209	.445	44-110	.400	47-56	.839	277	11.5	15	70	85	3.5	33	26	4	18
J.T. Schwartz	25-22	64-169	.379	19-65	.292	27-38	.711	174	7.0	13	72	85	3.4	63	57	1	48
Christian Durbin	25-2	50-142	.352	12-45	.267	36-48	.750	148	5.9	6	41	47	1.9	63	51	1	13
Nate Rambacher	23-17	32-64	.500	0-3	.000	21-37	.568	85	3.7	31	52	83	3.6	24	32	9	14
Brian Giesler	25-0	33-82	.402	15-51	.294	4-8	.500	85	3.4	8	21	29	1.2	4	10	4	2
Josh Eberly	21-1	27-54	.500	0-0	.000	9-15	.600	63	3.0	12	24	36	1.7	5	16	2	3
Christian Locher	17-0	15-48	.313	5-29	.172	10-14	.714	45	2.6	8	15	23	1.4	5	5	1	3
Josh Patterson	25-3	21-50	.420	4-13	.308	2-8	.250	48	1.9	14	25	39	1.6	16	21	1	8
Cody Fleeger	25-3	15-37	.405	9-20	.450	5-9	.556	44	1.8	6	31	37	1.5	12	6	1	6
Evan Schell	12-0	5-16	.313	3-9	.333	3-4	.750	16	1.6	2	8	10	0.8	1	4	0	1
Steve Battaglia	16-1	8-12	.667	0-0	.000	3-8	.375	19	1.2	7	8	15	0.9	2	4	1	1
Mike Grist	14-2	7-23	.304	0-3	.000	2-7	.286	16	1.1	5	17	22	1.6	5	2	0	4
Ford Reinalda	7-0	1-6	.167	0-1	.000	0-1	.000	2	0.3	0	3	3	0.4	0	0	0	0
Matt Mathias	4-0	0-2	.000	0-0	.000	0-0	.000	0	0.0	0	0	0	0.0	0	0	0	0
Team										35	35	70	2.8		5		
GROVE CITY	25	630-1453	.434	148-455	.325	284-399	.712	1692	67.7	220	640	860	34.4	352	344	34	180
Opponents	25	613-1454	.422	201-550	.365	292-472	.619	1719	68.8	288	653	941	37.6	319	370	90	176



SINGLE-SEASON LEADERS

SCORING

1960-61	Bart Niemeyer	305	15.3
1961-62	Bart Niemeyer	345	15.0
1962-63	Dave Marovich	323	13.5
1963-64	Dave Marovich	369	18.5
1964-65	Dave Marovich	380	19.0
1965-66	Jeff Claypool	414	19.7
1966-67	Jeff Claypool	602	25.1
1967-68	Jeff Claypool	532	29.6
1968-69	Jeff Claypool	686	29.8
1969-70	John Cochran	462	21.6
1970-71	Tom Montgomery	302	12.6
	Randy Caipen	302	12.6
1971-72	Fred Schwab	325	13.6
1972-73	Fred Schwab	322	14.6
1973-74	Fred Schwab	395	15.8
1974-75	Jim Perruquet	264	12.0
1975-76	Bill Fox	278	12.6
1976-77	Bill Fox	330	14.3
1977-78	Bill Fox	294	14.7
1978-79	Mike Donahoe	354	14.2
1979-80	Ron Livingston	303	15.2
1980-81	Bob Crow	372	16.2
1981-82	Bob Crow	391	15.6
1982-83	Mark Smith	481	19.2
1983-84	Jody Peters	333	12.8
1984-85	Jay Peters	452	20.5
1985-86	Deron Ryan	361	16.4
1986-87	Deron Ryan	338	15.4
1987-88	Joe Buckley	352	16.8
	Deron Ryan	352	16.0
1988-89	Joe Buckley	500	19.2
1989-90	Tim Mokma	352	14.1
1990-91	Tim Mokma	360	15.0
1991-92	Benjamin Davis	299	12.5
1992-93	Mark Timko	343	18.1
1993-94	Mark Timko	670	26.8
1994-95	Jim Wherley	409	16.4
1995-96	Dan Von Handorf	419	16.8
1996-97	Jim Wherley	273	11.4
1997-98	Brent Steineman	226	10.8
1998-99	Mike Cratsley	301	12.0
1999-00	Tanner Prosser	300	12.0
2000-01	Chris Kreider	295	12.3
2001-02	Tanner Prosser	314	11.6
2002-03	Nate Maurer	566	21.0
2003-04	Ryan Eller	424	16.3
2004-05	Phil Bushre	381	15.9
2005-06	Shawn Carr	310	11.9
2006-07	Ryan Gibson	346	11.9
2007-08	Shawn Carr	369	14.2
2008-09	Andy O'Keefe	320	12.8
2009-10	Andy O'Keefe	490	17.5
2010-11	Brett Matson	286	11.4
	Luke Tomaselli	297	11.4
2011-12	Brett Matson	327	13.1

REBOUNDS

Bart Niemeyer	239	11.8
Bart Niemeyer	279	12.1
George Beller	152	6.3
Curt Carson	172	8.6
Dave Tolley	146	7.3
Jeff Claypool	293	13.9
Jeff Claypool	319	13.3
Jeff Claypool	273	14.4
Jeff Claypool	282	11.8
John Cochran	279	12.7
Randy Caipen	230	9.6
Fred Schwab	195	8.1
Fred Schwab	149	6.8
Fred Schwab	167	6.7
Craig Campbell	137	6.9
Bill Fox	150	6.8
Bill Fox	206	9.0
Bill Fox	170	8.5
Bill Fox	222	8.9
Len Stemann	154	7.3
Dave Watson	126	5.5
Tom Spelman	140	5.8
Mark Smith	141	5.6
Curt Siverling	174	6.6
Curt Siverling	191	8.6
Kris Lightcap	214	9.7
Joe Buckley	127	6.0
Joe Buckley	128	6.1
Kevin Hess	128	6.1
Kevin Hess	165	6.3
Kevin Hess	160	6.2
Tim Mokma	160	6.7
Mark Timko	131	7.3
Randy Childress	161	7.3
Mark Timko	206	8.6
Tom Drake	194	7.8
Dan Von Handorf	167	6.7
Nate Cope	191	8.0
Andy Coddington	118	5.9
Lee Huffman	194	7.8
Tanner Prosser	216	8.6
Pat Roberts	198	8.3
Pat Roberts	244	9.0
Tanner Prosser	175	6.5
Tanner Prosser	222	8.2
Phil Bushre	180	7.3
Shawn Carr	105	4.0
Craig Hallman	205	7.1
Shawn Carr	138	5.3
Andy O'Keefe	114	4.6
Andy O'Keefe	158	5.6
Luke Tomaselli	132	5.1
Brett Matson	165	6.6



WOLVERINE RECORD BOOK

Top 20 Season Scorers

Name	Year	G	Pts
1. Jeff Claypool	1968-69	23	686
2. Mark Timko	1993-94	25	670
3. Jeff Claypool	1966-67	24	602
4. Nate Maurer	2002-03	27	566
5. Jeff Claypool	1967-68	18	532
6. Joe Buckley	1988-89	26	500
7. Andy O'Keefe	2009-10	28	490
8. Mark Smith	1982-83	25	481
9. John Cochran	1969-70	22	462
10. Bob Crow	1982-83	25	455
11. Jay Peters	1984-85	22	452
12. Ryan Eller	2003-04	26	424
13. Dan Von Handorf	1995-96	25	419
14. Tom Robinson	1958-59	20	415
15. Jeff Claypool	1965-66	21	414
16. Dan Von Handorf	1994-95	25	409
17. Fred Schwab	1973-74	25	395
18. Bob Crow	1981-82	25	391
19. Phil Bushre	2004-05	24	381
20. Dave Marovich	1964-65	20	380

Top 10 Season Scoring Averages

Name	Year	Points	Avg
1. Jeff Claypool	1968-69	686	29.8
2. Jeff Claypool	1967-68	532	29.6
3. Mark Timko	1993-94	670	26.8
4. Jeff Claypool	1966-67	602	25.1
5. John Cochran	1969-70	462	21.6
6. Nate Maurer	2002-03	566	21.0
7. Tom Robinson	1958-59	415	20.8
8. Jay Peters	1984-85	452	20.5
9. Jeff Claypool	1965-66	414	19.7
10. Mark Smith	1982-83	481	19.2

Top 5 Season Rebound Totals

Name	Year	Reb	Avg
1. Jeff Claypool	1966-67	319	13.3
2. Jeff Claypool	1965-66	293	13.9
3. Jeff Claypool	1968-69	282	11.8
4. John Cochran	1969-70	279	12.7
Bart Niemeyer	1961-62	279	12.1

Top 5 Career Rebound Totals

Name	Year	Total
1. Jeff Claypool	1965-69	1,167
2. Tanner Prosser	1999-2004	801
3. John Cochran	1966-70	776
4. Bill Fox	1975-79	748
5. Pat Roberts	1998-2002	685

Top 5 Season Assist Totals

Name	Year	Ast	Avg
1. Joe Burns	1973-74	158	6.3
2. Ryan Gibson	2006-07	122	4.2
3. Brett Matson	2009-10	115	4.1
4. Mike Donahoe	1977-78	113	5.1
5. Scott Barton	1973-74	111	4.4
Tanner Prosser	2002-03	111	4.1

Top 5 Career Assist Totals

Name	Year	Ast
1. Tanner Prosser	1999-2004	367
2. Joe Burns	1973-77	352
3. Mike Donahoe	1975-79	326
4. Ryan Gibson	2005-08	325
5. Brett Matson	2008-12	315

Top 5 Season Block Totals

Name	Year	Blk	Avg
1. Pat Roberts	2001-02	46	1.7
2. Drew Vandermeer	2009-10	44	1.6
3. Andy O'Keefe	2009-10	35	1.3
4. Lee Huffman	1998-99	29	1.1
5. Pat Roberts	2000-01	27	1.1

Top 5 Season Steal Totals

Name	Year	Stl	Avg
1. Jason Gilbert	1995-96	53	2.0
2. Jim Wherley	1996-97	52	2.2
Chris Kreider	2000-01	52	2.2
4. Brett Matson	2011-12	52	2.1
5. Brett Matson	2009-10	48	1.7

Top 5 Season Three-Point Goals

Name	Year	FG
1. Shawn Carr	2007-08	75
2. Shawn Carr	2006-07	65
3. Joe McCoy	2009-10	56
4. Dave Pifer	1999-2000	50
5. Dave Pifer	1998-99	48
Joe McCoy	2008-09	48

Top 5 Career Three-Point Goals

Name	Year	FG
1. Shawn Carr	2004-08	205
2. Dave Pifer	1996-2000	158
3. Joe McCoy	2006-10	151
4. Brett Matson	2008-12	114
5. Jason Gilbert	1992-96	108

WOLVERINE RECORD BOOK

Top 10 Season Field Goal Percentage

Name	Year	FG	Pct
1. Andy O'Keefe	2009-10	175-263	.667
2. Jeff Claypool	1968-69	249-385	.647
3. Tim Mokma	1988-89	128-206	.621
4. Phil Bushre	2002-03	113-182	.621
5. Tim Mokma	1990-91	139-224	.621
6. Phil Bushre	2004-05	153-247	.619
7. Tanner Prosser	1999-2000	122-197	.619
8. Pat Roberts	2001-02	106-172	.616
9. Andy O'Keefe	2008-09	121-205	.590
10. Tom Drake	1994-95	141-240	.588

Top 10 Career Field Goal Percentage

Name	Year	FG	Pct
1. Andy O'Keefe	2006-10	434-712	.610
2. Phil Bushre	2000-05	384-641	.599
3. Jeff Claypool	1965-69	868-1469	.591
4. Tim Mokma	1987-91	480-822	.584
5. Andy O'Keefe	2006-09	259-449	.577
6. Tanner Prosser	1999-2004	470-821	.572
7. Pat Roberts	1998-2002	290-515	.563
8. Tom Drake	1991-95	228-408	.559
9. Curt Siverling	1981-85	341-617	.553
10. Dirk Vandermeer	1974-78	306-559	.547

Individual Game Records

Points: 47, Mark Timko vs. Waynesburg, Feb. 12, 1994
FG Att: 35, Jeff Claypool vs. Geneva, Dec. 7, 1967
FG Made: 19, Jeff Claypool vs. Geneva, Dec. 7, 1967
FG Pct: 92.8 (13 of 14), Jeff Claypool vs. Geneva, Jan. 4, 1968
FT Att: 21, Jeff Claypool vs. St. Vincent, March 1, 1969
FT Made: 15, Jeff Claypool vs. Lock Haven, April 4, 1969
FT Pct: 100.0 (13 of 13), Ryan Eller vs. CMU, Nov. 20, 2004;
 Brett Matson vs. PSU DuBois, Nov. 20, 2009
3-Point Att: 12, Mark Timko vs. Lincoln, March 5, 1994;
 Mitch Marmelstein vs. Wash. & Jeff., Jan. 11, 2012
3-Point Made: 6, Mark Timko vs. Waynesburg, Feb. 12, 1994;
 Shawn Carr vs. Westminster, Feb. 7, 2007; Brett Matson vs.
 Bethany, Jan. 6, 2011, Mitch Marmelstein vs. Wash. & Jeff.,
 Jan 11, 2012; vs. Westminster, Feb. 4, 2012
3-Point Pct: 100.0 (5 of 5), Steve Carlson vs. Thiel, Jan. 20,
 1990; Mike Lukcic vs. St. Mary's (Md.), Jan. 10, 2004
Rebounds: 28, Jeff Claypool vs. Geneva, Dec. 7, 1967
 (Since 1973): 22, Bill Fox vs. Westminster, Feb. 9, 1977
Assists: 14, Joe Burns vs. Geneva, Feb. 6, 1974
Blocked Shots: 4, numerous times
Minutes: 49, Pat Roberts vs. Westminster, Jan. 26, 2001

Team Game Records

Points For: 119, vs. Bethany, Feb. 18, 1989
Points Against: 119, vs. Clarion, Feb. 16, 1965
Rebounds: 85, vs. Allegheny, Feb. 17, 1962
Assists: 32, vs. Bethany, Feb. 8, 2003
Longest Game: Four OTs, Jan. 29, 2002 at Westminster
 (Grove City wins 111-101)

The Last Time It Happened ...

Grove City Scoring 100 Points: vs. Westminster, Dec. 5, 2007 (Won 102-98, OT)
Grove City Allowing 100 Points: at Westminster, Feb. 5, 2005 (Lost 110-102, OT)
Grove City Scoring Under 50 Points: 36, at Thiel, Feb. 9, 2011 (Lost 70-36)
Grove City Scoring Under 50 Points In Victory: 46, at Waynesburg, Jan. 29, 2011 (Won 46-39)
Grove City Allowing Under 50 Points: 47, at Westminster, Feb. 20, 2010 (Won 69-47)
Grove City Allowing Under 40 Points: 39, vs. Waynesburg, Jan. 29, 2011 (Won 46-39)
Grove City Making No Three-Point Goals: at Wash. and Jeff., Jan. 31, 2004 (Won 80-72)
Grove City Player Triple-Double: Tanner Prosser at Westminster Jan. 21, 2004 (13 pts, 11 rebs, 10 asst)
Grove City Player Scoring 40 or More Points: 41, Ryan Eller, at Westminster, Feb. 5, 2005
Opposing Player Scoring 40 or More Points: 43, Keith Schubert, Bethany, Feb. 16, 2002
Grove City Player Scoring 30 or More Points: 41, Ryan Eller, at Westminster, Feb. 5, 2005
Opposing Player Scoring 30 or More Points: 30, Justin Baker, Mary Washington, Jan. 7, 2006
Grove City Player Recording 20 or More Rebounds: 22, Bill Fox vs. Westminster, Feb. 9, 1977
Grove City Player Recording 10 or More Assists: 10, Ryan Gibson, at Wash. & Jeff., Feb. 15, 2007
Grove City Player Recording a Double-Double: Brett Matson, vs. Waynesburg, Feb. 25, 2012 (24 pts, 11 rebs)
Grove City Player Perfect From The Field: 8-for-8, Ryan Eller at Thiel, Feb. 6, 2002



PROGRAM HISTORY

Since its inception in the 1898-99 season, the Grove City College men's basketball team has compiled over 1,100 wins and numerous championships while producing an innumerable number of outstanding players.

Grove City began play late in the 1898-99 season with a 32-9 loss at Allegheny in Meadville, Pa. After winning just three of its first 13 games in the first three seasons, Grove City found success in early years of the 20th Century.

Edward Campbell took over as player-head coach in 1901 and directed the Wolverines to Tri-State championships in 1903 and 1905. In his four seasons as head coach, Campbell compiled a 50-13 mark.

Frank Hays, William Brown and Fred Locke all spent time at the helm in the latter half of the decade before Weir C. Ketler took control in 1910.

Ketler, who later became President of Grove City College from 1916 to 1956, coached the team for three seasons.

Under Ketler's tutelage, Grove City went 32-7, including the undefeated team of 1911-1912, the only perfect squad in program history.

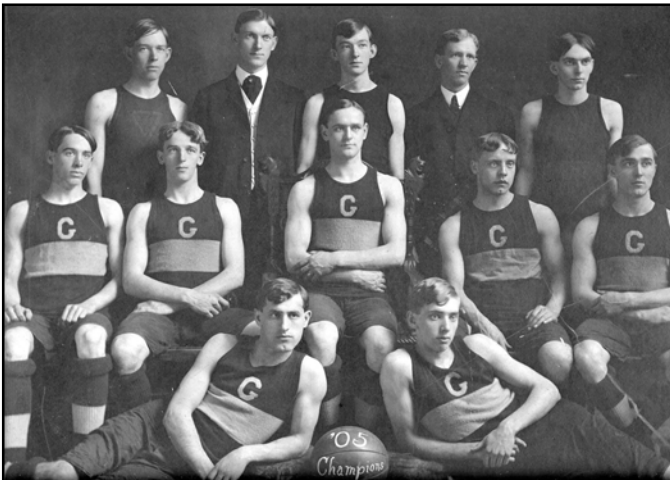
The College played its home games in the basement of Carnegie Library during that time period. The floor was small and the ceiling low.

Grove City had to rely on teamwork in order to work the ball through the defense for short shots under the basket.

In the 1912-13 season, Grove City moved into a new gymnasium on Main Street, which became the premier facility in the district.

The gymnasium became a hotbed of district college and high school games and hosted Mercer County, Northwest Pennsylvania and Western Pennsylvania high school tournament games.

Howard Acher, who played for Ketler, spent four total years over two stints as head coach during the World War I years while Harold White guided the 1917-1918 team.



The 1905 Tri-State Champion Team



The 1921 Tri-State Champion Team

In 1920, Robert E. Thorn took over as head coach. Thorn's first squad went 16-1, igniting the program's most successful run during the early years.

Between 1920 and 1928, the Crimson and White went 114-32 (.781). The 1921-22 team represented the East Region at the National Intercollegiate Tournament in Indianapolis.

The next season, Grove City upset both the University of Pittsburgh, 36-34, and West Virginia University, 38-9.

In that win at WVU, Grove City held West Virginia without a field goal for the entire game as all nine points came from the foul line.

Thorn coached the team through the mid-1930s until 1937, when Jim Loveless took over as head coach.

As World War II ignited, male enrollment at the College dropped sharply. Grove City did not field a team in 1943-44 but resumed intercollegiate action in the 1944-45 season under head coach Charles Ruffner.

Thorn returned as head coach for one more season before Loveless began a second run as head coach in 1947. Loveless coached until 1954, with four winning seasons in a five-year span highlighting his stint.

During Loveless' tenure, Grove City opened the Grove City College Arena on Dec. 5, 1953 and also played its 50th season of basketball.

Al Pesek then coached for one season before Jim Curry led Grove City to a 13-5 record in 1955-56.

Jack Behringer, Grove City's athletic director for 40 years, then directed the squad to a 12-6 mark the following season.

Dan Leviton then succeeded Behringer as head coach in the 1956-57. The five-year Leviton era produced the College's first three 1,000-point scorers.

Dutch Leonard (1955-59) became the first four-digit scorer in Grove City history while Tom Robinson (1957-62) and Bart Niemeyer (1958-62) also went over 1,000 points.

Grove City also played its 1,000th game on Feb. 17, 1962 against Allegheny.

PROGRAM HISTORY

But the most famous Grove City basketball player from that era became more known for throwing a baseball than shooting a basketball.

Gary Peters played basketball at Grove City from 1955-57 before beginning a professional baseball career that would put him in the national spotlight.

Peters signed with the Chicago White Sox organization while at Grove City and moved up through their minor-league system.

He broke through in 1963 and earned the American League's Rookie of the Year award by going 19-8 with an AL-best 2.33 earned run average.

Peters led the American League in wins with 20 in 1964 and also led the league in ERA in 1966 with a 1.98 mark. A two-time All-Star (1964, 1967), Peters finished his career with the Boston Red Sox.

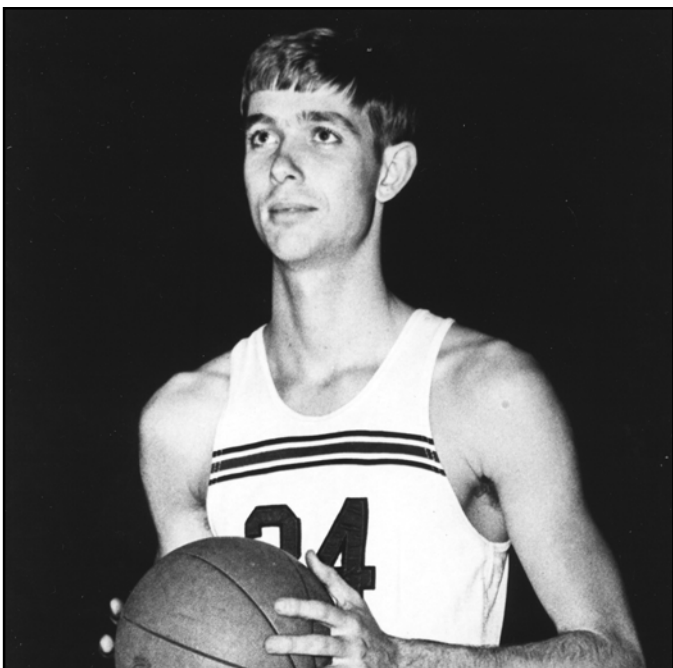
While Peters baffled American League hitters during the 1960s, the Grove City basketball program continued to reach new heights under head coach Cliff Wettig (1962-71).

Dave Marovich fired in 1,072 points in just three seasons while Ron Arrington scored 1,069 points from 1962 to 1966 to lead the Wolverines in the mid-1960s.

All-time leading scorer Jeff Claypool arrived on campus from Lexington, Ohio in the fall of 1965 and quickly made his mark on the program by averaging 20 points per game his freshman season.

Claypool then averaged 25 points per game in 1966-67 before posting 29.6 points per night as a junior.

As a senior in 1968-69, Claypool poured in 686 points for an average of 29.8 per game. That is still the school single-season record.



All-Time Leading Scorer Jeff Claypool

His 2,234 career points are by far the most in College history.

In his senior year, Grove City highlighted a 19-5 campaign by upsetting nationally-ranked Ashland, 41-40, in December 1968.

John Cochran became the College's second all-time leading scorer during the 1969-70 season with 1,352 career points after averaging 21.6 points that year.

In 1971, Russ Trimmer replaced Wettig as head coach, going 12-12 in his only season.

After 12 years at Lexington High School in Ohio, John Barr assumed control of the Grove City program in the fall of 1972. Barr would eventually lead Grove City to over 300 wins and three league titles in 26 years as head coach.

Despite Fred Schwab (1970-74) moving into third place on Grove City's all-time scoring list with 1,215 points, the Wolverines suffered three consecutive sub-.500 seasons under Barr.

But in 1975-76, Barr's efforts began to pay off. Grove City went 16-6 and qualified for the NCAA Division III Championship Tournament for the first time in school history.

Two years later, Grove City led the nation in field goal percentage defense, holding teams to just 39.9 percent.

The following year, 1978-79, the Wolverines returned to the NCAA Division III Championship Tournament. Led by 1,000-point scorers Bill Fox (1,192) and Mike Donahoe (1,051), Grove City went 18-7 and won its first-ever postseason game as the Wolverines downed Albright, 79-73, in the regional third-place game.

Donahoe and Fox both earned College Sports Information Directors of America (CoSIDA) Academic All-America recognition during that historic 1978-79 campaign.

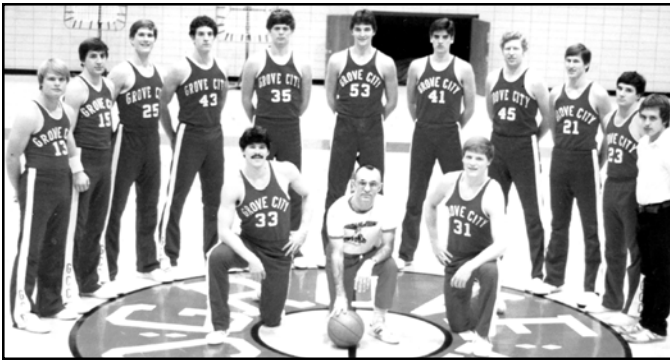
As the 1980s dawned, Grove City strung together four straight winning seasons, highlighted by the 1982-83 team that won a school-record 21 games.

Grove City again reached the NCAA Tournament and after a 56-52 loss to Widener in the first round, the Wolverines rebounded to drill Moravian, 76-54, in the third-place game.



The 1978-79 NCAA Tournament Team

PROGRAM HISTORY



The 1982-83 NCAA Tournament Team

finished 17-11 overall and advanced to the ECAC Southern Championship Tournament.

Bob Crow (1,450) and Mark Smith (1,171) each closed their careers by finishing among Grove City's top 10 all-time in scoring.

The 1983-84 season marked Grove City's final as a Division III independent. Grove City went 15-11 in that final season before embarking on a new challenge: the Presidents' Athletic Conference.

Gone from the schedule in 1984-85 were state schools Edinboro, Clarion and Slippery Rock. Instead, the Wolverines would play teams such as Washington & Jefferson, Carnegie Mellon and Hiram twice yearly.

Following a 7-15 overall mark in their first season in the PAC, the Wolverines followed with three consecutive 11-11 seasons. In that span, Deron Ryan (1984-88) became the 13th 1,000-point scorer in College history with 1,205 points.

Grove City became the dominant team of the Presidents' Athletic Conference in the late 1980s as the Wolverines captured three consecutive PAC titles.

The 1988-89 team won Grove City's first PAC crown and finished with a 20-6 mark, the second-most wins in school history.

Led by senior Joe Buckley, who finished his career with 1,413 points, Grove City again advanced to the NCAA Championship Tournament.

The Wolverines fell to Washington (Md.) in the regional semifinals but recovered for a 74-60 win over Susquehanna in the third place game.

Grove City again won conference titles in 1989-90 (14-12) and 1990-91 (17-7). Tim Mokma became the sixth 1,000-point scorer in the Barr era, finishing with 1,197 points at the conclusion of the 1990-91 year.

Although the Wolverines were unable to maintain their hold on the Presidents' Athletic Conference title, the postseason berths continued in the mid-1990s. Grove City captured bids to the Eastern Collegiate Athletic Conference (ECAC) Tournament in 1993-94, 1994-95 and 1995-96.

Grove City also produced a pair of 1,000-point scorers in 1994. Guard Mark Timko set a new College single-game and Grove City College Arena record with 47 points in the

home finale against Waynesburg, finishing his three-year career at Grove City with 1,255 points that season.

Timko led the nation in three-point percentage and his 670 points that year is the second-highest single-season total in program history.

Meanwhile, forward Benjamin Davis finished with 1,094 points in his four seasons.

Both the 1994-95 and 1995-96 teams won 16 games and reached the ECAC Tournament. Forward Dan Von Handorf (1,029) and guard Jim Wherley (1,162) both finished their careers as 1,000-point scorers.

Von Handorf joined Claypool as the only Grove City player to score 400 points in a season twice.

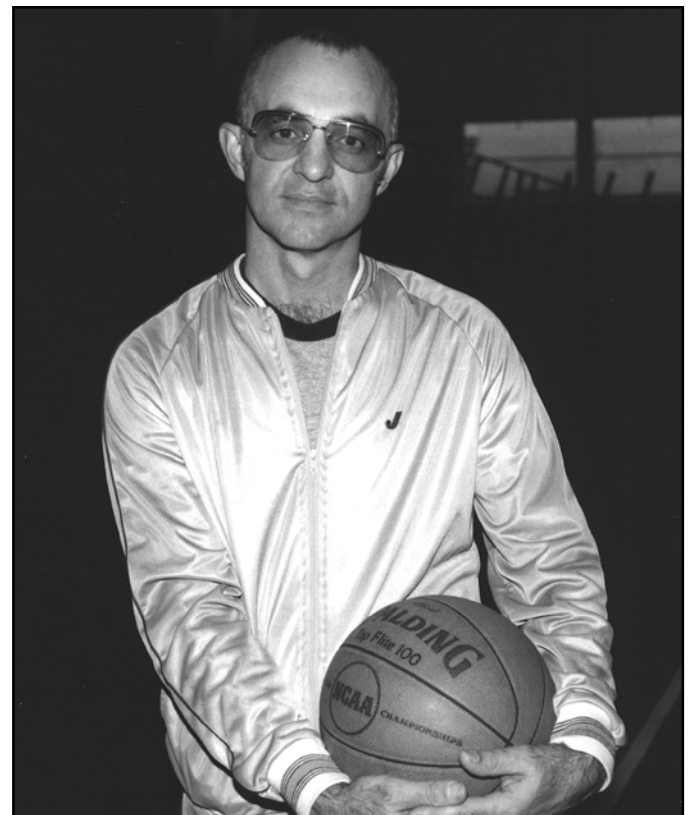
During that 1995-96 season, Barr earned his 300th victory with a 71-59 home win over Waynesburg Feb. 17, 1996. Grove City also won its 1,000th game that year.

Barr's final squad featured no seniors but still managed to work its way into contention for the PAC crown.

On "John Barr Day" in the Grove City College Arena, Grove City nearly rallied from a 25-point deficit before falling to conference champion Thiel to close the 1997-98 season.

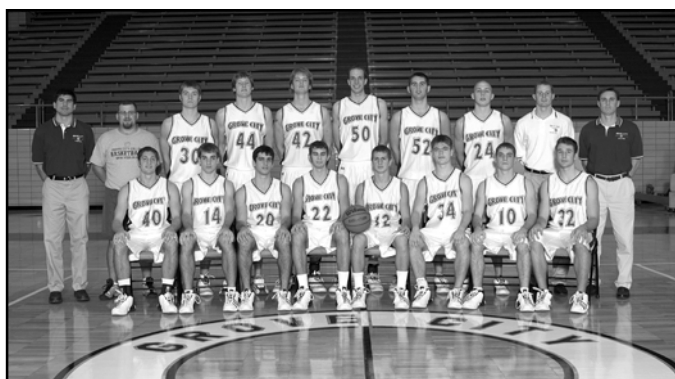
Following Barr's retirement, a new era of Wolverine basketball began as assistant coach Steve Lamie took over as head coach prior to the 1998-99 season.

A 1985 graduate of the College, Lamie played on the 1983 NCAA Tournament team and had assisted Barr for



All-Time Coaching Wins Leader John Barr

PROGRAM HISTORY



The 2002-2003 PAC Championship Team

four seasons. His first team used an iron-clad defense to win the program's fourth PAC title.

Grove City had just one double-digit scorer and no player average more than 12 points per game in 1998-99.

But the Wolverines held opponents to just 60 points per game and limited the opposition to just 36.3 percent shooting from the floor, an all-divisions NCAA record.

The Wolverines finished 16-9 and advanced to the ECAC Southern Championship Tournament. Grove City went 7-1 in conference play to earn the championship.

Grove City followed a 17-win season in 2001-02 by racing out to a 6-0 start in 2002-03. The Wolverines ultimately captured the PAC title and hosted Neumann College in an ECAC quarterfinal game.

It was the first-ever home playoff game for Grove City, which finished the season 18-9.

Grove City secured its fourth straight winning season in 2003-04 as Prosser became the program's 20th 1,000-point scorer.

He finished his career in fifth place on Grove City's all-time list with 1,263 points and tops in assists with 367 for his career.

Forward Ryan Eller became the program's 21st 1,000-point scorer in 2004-05 as the Wolverines earned their fifth straight winning season.

In 2007, Grove City captured perhaps its most improbable PAC title as the Wolverines won the conference tournament after entering as the No. 4 seed.

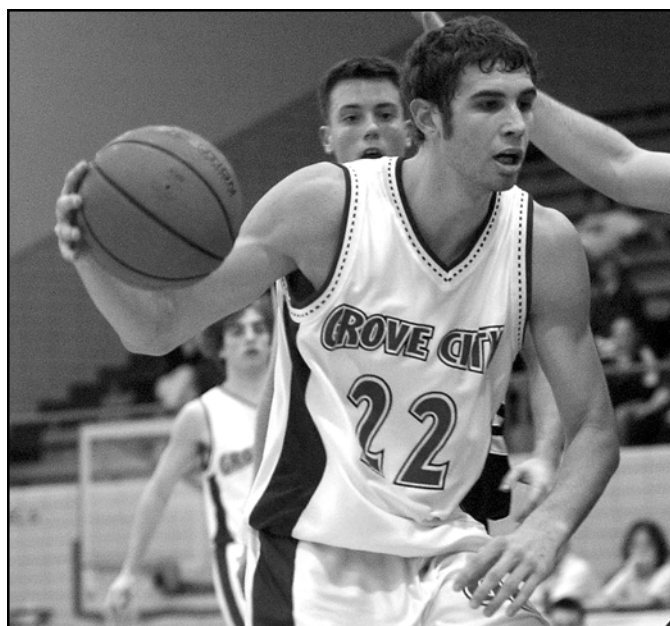
Grove City whipped Waynesburg and Westminster in the first two rounds of the tournament, then earned the title with a 60-58 victory at third-seeded W&J.

In 2008, Shawn Carr set a new career record with 207 three-point goals. He also surpassed the 1,000-point mark. Grove City finished 17-11 overall and advanced to the ECAC Southern Championship Tournament.

Grove City captured its third straight ECAC berth in 2008-09 after jumping out to a 5-1 start.

Guard Ryan Gibson concluded his career as Grove City's 17th all-time leading scorer with 1,079 points.

The Wolverines returned to the NCAA Championship Tournament in 2010 as Grove City captured the conference



Tanner Prosser -- All-Time Assist Leader, Second-Leading Rebounder, Fifth-Leading Scorer

title with a 78-61 home win over Thomas More. Grove City finished the season 19-9 overall.

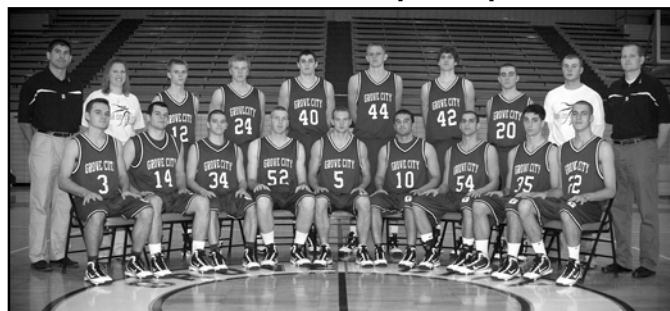
Center Andy O'Keefe became Grove City's 24th all-time 1,000-point scorer and graduated as the program's all-time leader in field goal percentage.

He also earned CoSIDA Academic All-America honors, joining Joe Burns (1977), Dirk Vandermeer (1977), Fox (1978), Donahoe (1979), Smith (1983) and Curt Siverling (1984, 1985) as the program's Academic All-Americans.

Brett Matson became the program's 25th 1,000-point scorer during the 2011-12 season, finishing with 1,108 points.



The 2006-07 PAC Championship Team



The 2009-10 PAC Championship Team

YEAR-BY-YEAR RECORDS

Year	W	L	Pct.	Head Coach	Year	W	L	Pct.	Head Coach
1898-99	0	2	.000	"Peggy" Swope	1955-56	13	5	.722	Jim Curry
1899-00	1	3	.250	J.L. Thompson	1956-57	12	6	.667	Jack Behringer
1900-01	2	8	.200	J.L. Thompson	1957-58	10	9	.526	Dan Leviton
1901-02	13	3	.813	Edward Campbell	1958-59	10	10	.500	Dan Leviton
1902-03	13	1	.929	Edward Campbell	1959-60	6	14	.300	Dan Leviton
1903-04	9	5	.643	Edward Campbell	1960-61	9	11	.450	Dan Leviton
1904-05	15	4	.789	Edward Campbell	1961-62	18	5	.783	Dan Leviton
1905-06	3	5	.375	Frank Hays	1962-63	12	12	.500	Cliff Wettig
1906-07	6	5	.545	William Brown	1963-64	8	12	.400	Cliff Wettig
1907-08	9	6	.600	Frank Hays	1964-65	12	8	.600	Cliff Wettig
1908-09	9	6	.600	Fred Locke	1965-66	9	12	.429	Cliff Wettig
1909-10	7	5	.583	Frank Hays	1966-67	14	10	.583	Cliff Wettig
1910-11	11	3	.786	Weir Ketler	1967-68	15	4	.789	Cliff Wettig
1911-12	12	0	1.000	Weir Ketler	1968-69	19	5	.792	Cliff Wettig
1912-13	9	4	.692	Weir Ketler	1969-70	11	11	.500	Cliff Wettig
1913-14	11	7	.611	William Young	1970-71	12	12	.500	Cliff Wettig
1914-15	13	6	.684	William Young	1971-72	12	12	.500	Russ Trimmer
1915-16	9	7	.563	Howard Acher	1972-73	7	15	.467	John Barr
1916-17	5	6	.455	Howard Acher	1973-74	10	15	.400	John Barr
1917-18	2	7	.222	Harold White	1974-75	8	15	.348	John Barr
1918-19	3	9	.250	Howard Acher	1975-76	16	6	.727	John Barr
1919-20	13	7	.650	Howard Acher	1976-77	14	9	.608	John Barr
1920-21	16	1	.941	Bob Thorn	1977-78	9	13	.409	John Barr
1921-22	16	4	.800	Bob Thorn	1978-79	18	7	.720	John Barr
1922-23	19	4	.826	Bob Thorn	1979-80	9	12	.429	John Barr
1923-24	15	6	.714	Bob Thorn	1980-81	13	10	.565	John Barr
1924-25	16	2	.889	Bob Thorn	1981-82	13	12	.520	John Barr
1925-26	10	4	.714	Bob Thorn	1982-83	21	4	.840	John Barr
1926-27	11	5	.688	Bob Thorn	1983-84	15	11	.576	John Barr
1927-28	11	6	.647	Bob Thorn	1984-85	7	15	.318	John Barr
1928-29	5	9	.357	Bob Thorn	1985-86	11	11	.500	John Barr
1929-30	13	7	.650	Bob Thorn	1986-87	11	11	.500	John Barr
1930-31	14	5	.737	Bob Thorn	1987-88	11	11	.500	John Barr
1931-32	9	8	.529	Bob Thorn	1988-89	20	6	.769	John Barr
1932-33	7	7	.500	Bob Thorn	1989-90	14	12	.538	John Barr
1933-34	3	9	.333	Bob Thorn	1990-91	17	7	.708	John Barr
1934-35	5	10	.333	Bob Thorn	1991-92	2	22	.083	John Barr
1935-36	4	10	.286	Bob Thorn	1992-93	8	14	.364	John Barr
1936-37	10	6	.625	Bob Thorn	1993-94	14	11	.560	John Barr
1937-38	11	7	.611	Jim Loveless	1994-95	16	9	.640	John Barr
1938-39	9	7	.563	Jim Loveless	1995-96	16	10	.615	John Barr
1939-40	6	12	.333	Jim Loveless	1996-97	10	14	.417	John Barr
1940-41	11	4	.733	Jim Loveless	1997-98	9	13	.409	John Barr
1941-42	12	5	.706	Jim Loveless	1998-99	16	9	.640	Steve Lamie
1942-43	3	5	.375	Jim Loveless	1999-00	11	14	.440	Steve Lamie
1944-45	2	8	.200	Charles Ruffner	2000-01	13	11	.542	Steve Lamie
1945-46	5	10	.333	Bob Thorn	2001-02	17	10	.630	Steve Lamie
1946-47	2	14	.125	Jim Loveless	2002-03	18	9	.667	Steve Lamie
1947-48	9	10	.474	Jim Loveless	2003-04	14	13	.519	Steve Lamie
1948-49	11	6	.647	Jim Loveless	2004-05	13	12	.520	Steve Lamie
1949-50	8	11	.421	Jim Loveless	2005-06	9	17	.346	Steve Lamie
1950-51	12	8	.600	Jim Loveless	2006-07	16	13	.552	Steve Lamie
1951-52	10	7	.588	Jim Loveless	2007-08	17	11	.607	Steve Lamie
1952-53	10	9	.526	Jim Loveless	2008-09	12	13	.480	Steve Lamie
1953-54	4	13	.235	Jim Loveless	2009-10	19	9	.679	Steve Lamie
1954-55	6	13	.158	Al Pesek	2010-11	5	21	.192	Steve Lamie
					2011-12	11	14	.440	Steve Lamie



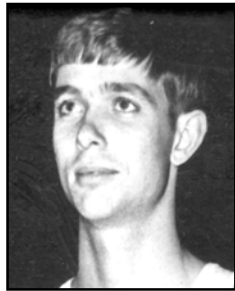
ALL-TIME OPPONENT SERIES

Opponent	W	L	First	Last
Adrian	2	0	1926-27	1929-30
Akron	2	0	1916-17	1917-18
Albion	0	1	1982-83	1982-83
Albright	2	2	1978-79	2005-06
Alderson-Broadus	1	0	1969-70	1969-70
Alfred	3	3	1937-38	1997-98
Allegheny	69	72	1898-99	2006-07
Alliance	25	21	1944-45	1983-84
Alma	1	0	1980-81	1980-81
Alvernia	0	1	1994-95	1994-95
Amherst	1	0	1923-24	1923-24
Arcadia	5	2	1900-01	1906-07
Ashland	1	2	1939-40	1968-69
Averett	1	0	2004-05	2004-05
Baldwin-Wallace	10	7	1966-67	1992-93
Bethany	49	39	1907-08	2011-12
Bluffton	1	3	1966-67	2011-12
Briarcliffe	1	0	2007-08	2007-09
Bridgewater, Va.	0	1	2005-06	2005-06
Buffalo	2	5	1947-48	1957-58
Buffalo State	1	7	1937-38	1986-87
California, Pa.	1	2	1970-71	1971-72
Canisius	1	0	1931-32	1931-32
Capital	3	2	1914-15	1985-86
Carnegie Mellon	60	49	1908-09	2007-08
Case Western Reserve	4	4	1940-41	2006-07
Carroll	0	1	1993-94	2000-01
Catholic	1	1	1922-23	2008-09
Cazenovia	1	0	2002-03	2002-03
Centre	1	0	1978-79	1978-79
Cincinnati-Claremont	0	1	2006-07	2006-07
Clarion	39	41	1931-32	1983-84
Cleveland State	16	7	1934-35	1958-59
Davis and Elkins	1	0	1938-39	1938-39
Defiance	0	2	1992-93	1996-97
Delaware	1	0	1965-66	1965-66
Denison	4	3	1969-70	2004-05
DePauw	0	1	1980-81	1980-81
Dickinson	1	4	1984-85	2008-09
Duquesne	6	9	1913-14	1932-33
Dyke	1	0	1990-91	1990-91
Earlham	3	0	1939-40	1985-86
Edinboro	22	14	1906-07	1983-84
Elizabethtown	0	3	1978-79	2004-05
Elon	0	1	1984-85	1984-85
Findlay	1	1	1970-71	1983-84
Franciscan	1	2	1962-63	2007-08
Franklin	2	0	1914-15	1915-16
Fredonia State	12	5	1939-40	1976-77
Frostburg State	10	4	1982-83	2007-08
Gannon	2	4	1950-51	1964-65
Geneva	86	73	1898-99	2011-12
Georgetown	1	0	1920-21	1920-21
Gettysburg	1	0	1990-91	1990-91
Glassboro State	0	1	1986-87	1986-87
Hamilton	0	1	1991-92	1991-92
Hanover	3	0	1982-83	1989-90
Haverford	3	0	1921-22	1982-83
Heidelberg	0	3	1977-78	1983-84
Hilbert	7	2	1993-94	2001-02
Hiram	31	16	1903-04	2011-12
Hope	0	1	1989-90	1989-90
Indiana, Pa.	5	18	1951-52	1972-73
Ithaca	0	1	2010-11	2010-11
John Carroll	12	7	1925-26	2007-08
Juniata	18	15	1930-31	2010-11
Kalamazoo	0	2	1921-22	1987-88
Kean	0	1	1990-91	1990-91
Kent State	0	1	1936-37	1936-37
Kenyon	8	2	1968-69	2011-12
Kings Point	0	1	2001-02	2001-02
Lake Erie	0	3	1994-95	2004-05
La Roche	10	6	1979-80	2004-05
Lebanon Valley	0	1	1979-80	1979-80
Lincoln	1	1	1993-94	1995-96

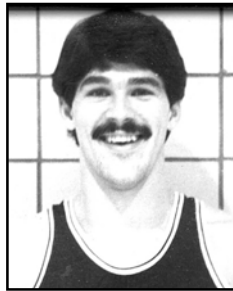
Opponent	W	L	First	Last
Lock Haven	3	0	1956-57	1968-69
Loyola, Md.	0	1	1923-24	1923-24
Lycoming	0	1	1965-66	1965-66
Lynchburg	1	0	1967-68	1967-68
Madison	0	2	1973-74	1975-76
Malone	4	5	1973-74	2007-08
Mansfield	0	1	1975-76	1975-76
Marietta	5	4	1903-04	2009-10
Marist	1	0	1970-71	1970-71
Mary Washington	0	1	2005-06	2005-06
Medaille	4	0	2001-02	2005-06
Misericordia	0	1	1995-96	1995-96
Moravian	1	1	1982-83	2003-04
Mt. Aloysius	0	1	2010-11	2010-11
Mt. St. Mary's	0	1	1969-70	1969-70
Mt. Union	19	21	1908-09	2010-11
Mt. Vernon Nazarene	2	0	1979-80	1988-89
Muskingum	4	3	1920-21	2011-12
Neumann	1	0	2002-03	2002-03
New Hampshire	1	0	1969-70	1969-70
Niagara	0	1	1939-40	1939-40
Oberlin	2	2	1960-61	1985-86
Ohio Dominican	2	0	1969-70	1974-75
Ohio Northern	1	1	1928-29	1993-94
Ohio State Lima	1	0	2008-09	2008-09
Ohio Wesleyan	6	5	1914-15	2009-10
Olivet	2	1	1983-84	1994-95
Otterbein	2	4	1969-70	2002-03
Pennsylvania	1	0	1902-03	1902-03
Penn State	1	0	1902-03	1902-03
Penn State Altoona	10	2	1998-99	2011-12
Penn State Beaver	3	1	2006-07	2011-12
Penn State Behrend	27	21	1973-74	2006-07
Penn State DuBois	1	0	2009-10	2009-10
Pitt-Bradford	1	4	1995-96	1999-00
Pitt-Greensburg	7	2	1996-97	2011-12
Pitt-Johnstown	0	2	1973-74	1974-75
Pittsburgh	12	11	1904-05	1950-51
Randolph-Macon	0	1	1965-66	1965-66
St. Bonaventure	1	3	1919-20	1945-46
St. Francis	6	4	1924-25	1966-67
St. Mary's	1	0	2003-04	2003-04
St. Thomas	0	1	1930-31	1930-31
Saint Vincent	35	37	1936-37	2011-12
Salem	0	1	1945-46	1945-46
Scranton	0	1	1975-76	1975-76
Shenandoah	1	0	1975-76	1975-76
Slippery Rock	33	45	1905-06	2010-11
Susquehanna	3	2	1970-71	1988-89
Syracuse	1	0	1902-03	1902-03
Taylor	1	0	1994-95	1994-95
Thiel	106	41	1922-23	2011-12
Thomas More	10	6	1994-95	2011-12
Tiffin	0	4	1974-75	1992-93
Urbana	1	2	1972-73	1993-94
Ursinus	2	0	1983-84	1987-88
Villanova	1	0	1923-24	1923-24
Wabash	1	3	1980-81	1997-98
Walsh	1	1	1980-81	1981-82
Washington, Md.	0	2	1923-24	1988-89
Wash. & Jeff.	57	53	1913-14	2011-12
Washington & Lee	0	2	1973-74	1976-77
Waynesburg	60	29	1912-13	2011-12
West Virginia	10	8	1904-05	1928-29
West Virginia State	2	0	1966-67	1973-74
West Virginia Wesleyan	3	0	1919-20	1929-30
Western Reserve	1	0	1901-02	1901-02
Westminster	50	79	1901-02	2011-12
Widener	0	1	1982-83	1982-83
Wilkes	1	0	1986-87	1986-87
William Paterson	1	0	2001-02	2001-02
Wittenberg	1	0	1927-28	1927-28
Wooster	12	23	1904-05	2009-10
Yale	1	0	1919-20	1919-20
York	0	2	1979-80	1992-93
Youngstown State	1	6	1933-34	1942-43



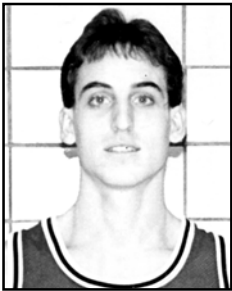
THE 1,000-POINT CLUB



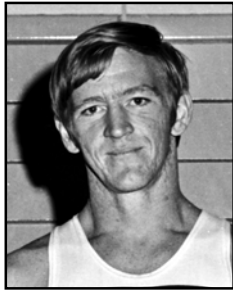
Jeff Claypool
2,234
1965-69



Bob Crow
1,450
1979-83



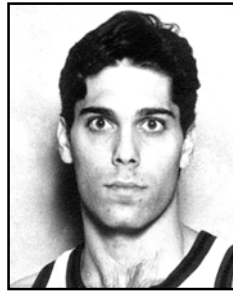
Joe Buckley
1,413
1985-89



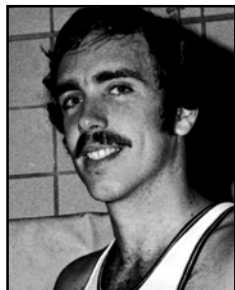
John Cochran
1,352
1966-70



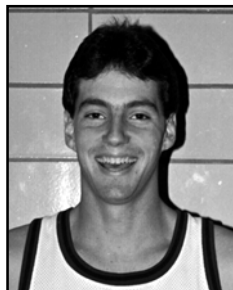
Tanner Prosser
1,263
1999-00, 01-04



Mark Timko
1,255
1991-94



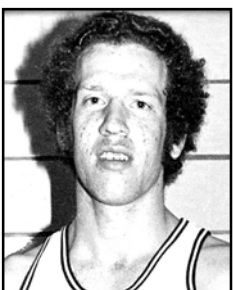
Fred Schwab
1,215
1970-74



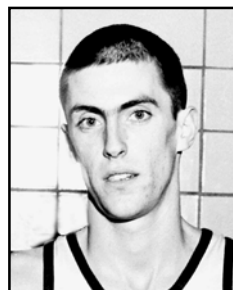
Deron Ryan
1,205
1984-88



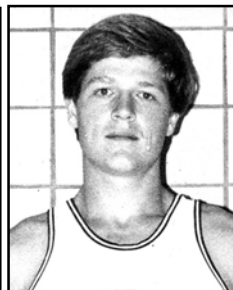
Tim Mokma
1,197
1987-91



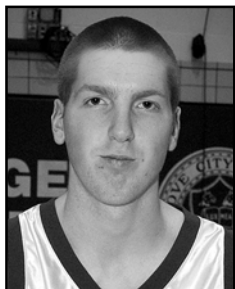
Bill Fox
1,192
1975-79



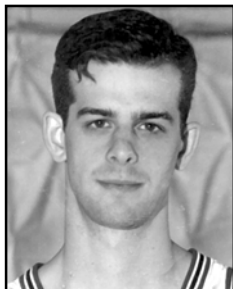
Tom Robinson
1,181
1957-62



Mark Smith
1,171
1979-83



Andy O'Keefe
1,164
2006-10



Jim Wherley
1,162
1993-97



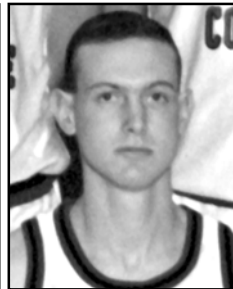
Bart Niemeyer
1,145
1958-62



Shawn Carr
1,121
2004-08



Brett Matson
1,108
2008-12



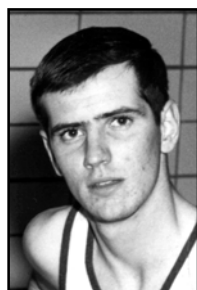
Benjamin Davis
1,094
1990-94



Ryan Gibson
1,079
2005-09



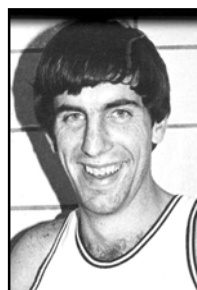
Dave Marovich
1,072
1962-65



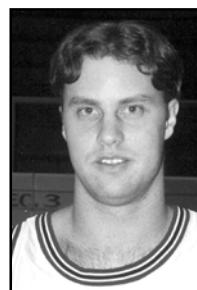
Ron Arrington
1,069
1962-66



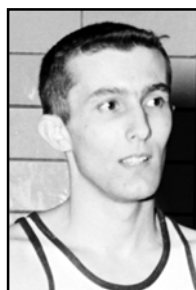
Ryan Eller
1,068
2001-05



Mike Donahoe
1,051
1975-79



Dan Von Handorf
1,029
1992-96



Dutch Leonard
1,013
1955-59

ATHLETIC HALL OF FAME

Twelve men associated with the men's basketball program are in the College's Athletic Hall of Fame.



John Barr

- Coached men's basketball team to 319-278 record from 1972 to 1998.
- Guided 1982-83 team to 22 wins at No. 7 national ranking.

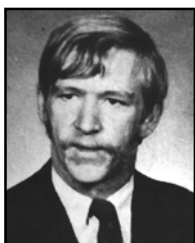
2009 INDUCTEE



Jeff Claypool '69

- Became Grove City's first basketball All-American in 1969.
- Program's all-time leading scorer (2,234) and rebounder (1,167).
- Averaged 29.8 points per game and scored 686 points in 1968-69. Earned AP and UPI All-America.

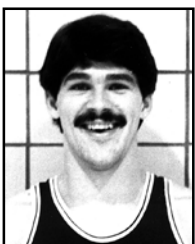
2007 INDUCTEE



John Cochran '70

- Scored 1,352 points at Grove City from 1966 to 1970.
- Graduated as Grove City's No. 2 all-time leading scorer.
- Averaged 15.7 points and nine rebounds per game for career.

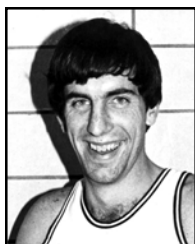
2011 INDUCTEE



Bob Crow '83

- Scored 1,450 points at Grove City from 1979 to 1983.
- *Pittsburgh Press* Co-Player of the Year in 1983 after leading Grove City to 22 wins and No. 7 national ranking in NCAA Division III.

2008 INDUCTEE



Mike Donahoe '79

- Member of 1976 and 1979 NCAA Tournament teams.
- CoSIDA Academic All-American in 1979.
- Finished with 1,051 career points.

2012 INDUCTEE



'Dutch' Leonard '59

- Grove City's first 1,000-point scorer. Graduated as Grove City's all-time leading scorer with 1,013 points.
- Set single-game scoring record with 41 points against Fenn.

2009 INDUCTEE



David Marovich '66

- Scored 1,072 career points in three varsity seasons.
- Set single-season scoring record with 380 points in 20 games in 1964-65 season.

2010 INDUCTEE



Bart Niemeyer '62

- Scored 1,145 points from 1958 to 1962.
- Graduated as Grove City's all-time leader with 945 rebounds.
- Led team in scoring and rebounding in final two seasons.

2011 INDUCTEE



Tom Robinson '62

- Scored Grove City record 1,181 points from 1957 to 1962.
- Set single-season marks with 415 points and 288 rebounds.
- One of six men to average 20 points per game for a season.

2011 INDUCTEE



Frank Sbrocco '57

- Played soccer, basketball and tennis at Grove City from 1953-57, earning 10 letters.
- Earned three letters in basketball as a starting guard.
- Grove City's first All-American in modern era (soccer, 1956).

2007 INDUCTEE



Robert E. Thorn '16

- Served as Grove City athletic director from 1920 to 1957.
- Coached basketball team, founded soccer program and reinstated men's tennis team.
- As basketball coach, Thorn guided Grove City to 21 straight victories

between 1921 and 1922.

2007 INDUCTEE



Cliff Wettig

- Coached soccer, basketball and tennis at Grove City from 1962 to 1971. Accumulated a combined record of 251-123-4.
- Compiled a 112-86 record as basketball coach at Grove City.

2008 INDUCTEE

ABOUT THE COLLEGE

The beautifully landscaped campus of Grove City College stretches over 150 acres and includes 28 neo-Gothic buildings. It is considered one of the loveliest in the nation.

While the College has changed to meet the needs of the society it serves, its basic philosophy has remained unchanged since its founding in 1876. It is a Christian, liberal arts institution, dedicated to the principle of providing the highest quality education at the lowest possible cost.

Wishing to remain truly independent and to retain its distinctive qualities as a private school governed by private citizens (trustees), it is one of few colleges in the country that does not accept federal funds.

Affiliated with the Presbyterian Church (U.S.A.), but not narrowly denominational, the College believes that to be well-educated a student should be exposed to the central ideas of the Judeo-Christian tradition.

Grove City College offers undergraduate degrees in liberal arts, sciences, engineering, business, and music and is distinguished as a national leader in education.

Grove City's programs in electrical and mechanical engineering are accredited by the Engineering Accreditation Commission Board of the Accreditation Board for Engineering and Technology.

The "big business school curriculum" prepares students for today's global business reality. An extensive variety of internship opportunities are provided across the curriculum.

Grove City College wants its students to be prepared in this age of mobile information technology.

Each entering freshman receives a tablet computer which is his or hers to keep upon graduation with a four-year degree.

This is part of the Information Technology Initiative, a total program integrating technology across the curriculum.



**Grove City College's
Breen Student Union**

The College believes that its student body has a unique mix of talents and abilities.

Its Career Services program helps students identify those key assets during the first year and then builds a four-year strategy to help them pursue a satisfying career.

Personal counseling, professional speakers, databases, alumni contacts, summer internships, corporate visits, employer presentations and more are incorporated into the career preparation experience.

Grove City follows the semester calendar plan, in addition to offering two-week sessions in January and May.

Most of the 2,500 students live in separate men's and women's dormitories. The rest are local commuters or married students.

A full program of cultural, professional, athletic and social activities is offered, including 19 intercollegiate varsity athletic teams.

Grove City, a town of 8,100 people, is located 60 miles north of Pittsburgh. It is located near Interstates 79 and 80 and has a municipal airport.

Grove City College 2012-2013

Tuition

\$7,106 per semester

Room and Board

\$3,872 per semester

PROGRAMS AND MAJORS

ACCOUNTING

Accounting (B.S.)

BIBLICAL AND RELIGIOUS STUDIES

Biblical and Religious Studies (B.A.)

BIOLOGY

Biology (B.S.)

Molecular Biology (B.S.)

BUSINESS

Business Management (B.S.)

Finance (B.S.)

Industrial Management (B.S.)

International Business (B.S.)

Marketing Management (B.S.)

CHEMISTRY

Biochemistry (B.S.)

Chemistry (B.S.)

COMMUNICATION STUDIES

Communication Studies (B.A.)

COMPUTER SCIENCE

Computer Science (B.S.)

Computer Information Systems (B.S.)

ECONOMICS

Economics (B.A.)

Business/Economics (B.S.)

EDUCATION

Pre K-4 Elementary Education (B.S.)

Pre K-8 Special Education and Pre K-4

Elementary Education (B.S.)

Middle Level Math/English/Science Educ. (B.S.)

K-12 Biology/General Science Educ. (B.S.)

K-12 French Education (B.A.)

K-12 Music Education (B.M.)

K-12 Spanish Education (B.A.)

7-12 Biology/General Science Educ. (B.S.)

7-12 Chemistry Education (B.S.)

7-12 Chemistry/Gen. Science Educ. (B.S.)

7-12 English Education (B.A.)

7-12 English/Communication Educ. (B.A.)

7-12 Mathematics Education (B.S.)

7-12 Physics Education (B.S.)

7-12 Physics/Gen. Science Educ. (B.S.)

7-12 Social Studies Education (B.A.)

ELECTRICAL/COMPUTER ENGINEERING

Electrical/Computer Engineering (B.S.E.E.)

ENGLISH

English (B.A.)

ENTREPRENEURSHIP

Entrepreneurship (B.S.)

HISTORY

History (B.A.)

MATHEMATICS

Mathematics (B.S.)

MECHANICAL ENGINEERING

Mechanical Engineering (B.S.M.E.)

MODERN LANGUAGES

French (B.A.)

Spanish (B.A.)

MUSIC & FINE ARTS

Music (B.M.)

Music/Business (B.M.)

Music/Performing Arts (B.M.)

Music/Religion (B.M.)

PHILOSOPHY

Philosophy (B.A.)

PHYSICAL EDUCATION

Exercise Science (B.S.)

PHYSICS

Applied Physics (B.S.)

Applied Physics/Computer (B.S.)

POLITICAL SCIENCE

Political Science (B.A.)

PSYCHOLOGY

Psychology (B.A. or B.S.)

SOCIOLOGY

Sociology (B.A.)

PRE-PROFESSIONAL PROGRAMS

Pre-Dental

Pre-Health

Pre-Law

Pre-Theology

Pre-Veterinary

ATHLETIC FACILITIES

All 19 of Grove City College's intercollegiate varsity athletic teams utilize the College's superior facilities for competition, practices and off-season training and conditioning.

Grove City's athletic facilities have undergone numerous renovations and improvements in recent years, with more upgrades scheduled in the immediate future.

On lower campus, Robert E. Thorn Field is home to the College's football and track and field teams. The College installed CSTurf at Robert E. Thorn Field. CSTurf is a synthetic playing surface that features polyethylene LSR grass fibers and a rubber infill system.

The College also installed lights and resurfaced the 8-lane track around the field. Grove City also reconfigured its setup for track meets during these renovations.

In 2011, the College installed a new state-of-the-art scoreboard and new bleachers on the visitors' side at Thorn Field.

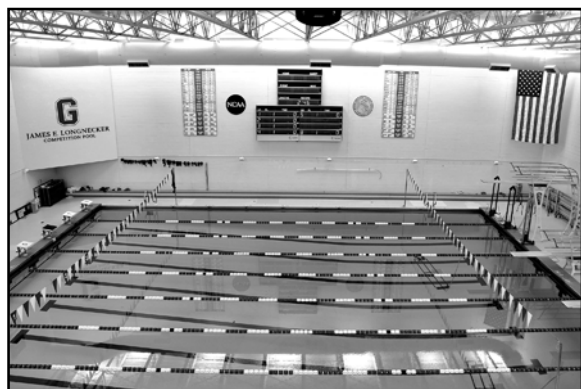
These upgrades benefit the entire campus community as the complex is used by both the College's club sports teams and its intramural program, along with the varsity teams.

The track is also available for use by recreational walkers and joggers. The complex also features 10 all-weather tennis courts next to the field.

Phillips Field House, located at the north end of the complex, features several locker rooms, an athletic training room, meeting rooms and coaches' offices. It is used by the football, track and tennis programs throughout the academic year.

The Physical Learning Center (PLC) houses the Grove City College Arena, home to the College's basketball and volleyball programs.

In summer 2012, the College renovated the Arena by installing new lighting and a new playing floor. In recent years, the Arena has also received new scoreboards and scorers' tables.



The James E. Longnecker Pool is one of the nation's premier small-college venues for both swimming and diving and water polo.



The home of Grove City's football and track and field teams, Robert E. Thorn Field has received numerous renovations in recent years.

In addition, the PLC features the James E. Longnecker Pool, one of the premier aquatic facilities in the region. Each year, Grove City hosts the Presidents' Athletic Conference Swimming and Diving Championships at the state-of-the-art facility.

In 2012, the College also hosted the Collegiate Water Polo Association Division III Championships at the James E. Longnecker Pool.

The PLC also features a second pool, the Recreational Pool, which is used by members of the College community year-round.

A fitness room featuring aerobic and Cybex equipment and a separate weight room with free and mechanized weights are also keystone areas of the facility.

The PLC also features six racquetball/handball courts as well as two adjacent intramural rooms. The intramural rooms each feature four basketball courts, four indoor tennis courts, four volleyball courts, an indoor track and two indoor jumping pits.

The College installed new synthetic flooring and several new electronic scoreboards throughout the intramural rooms.

The Physical Learning Center houses the athletic training room, locker rooms and offices for coaches and physical education faculty.

The College recently constructed a new office suite for coaches and athletic administration, while also incorporating its Athletic Hall of Fame area.

Grove City's outdoor athletic facilities have also received numerous upgrades in recent years.

The varsity soccer field, College Field, was expanded and re-sodded during the summer of 2005. College Field also received a new press box during the summer of 2007.

Meanwhile, Grove City's baseball and softball facilities recently received major facelifts as new dugouts, new fencing and electronic scoreboards were installed on both fields.



2012-13 SCHEDULE

NOV. 16-	PENN ST. BEHREND		JAN. 12	THIEL*	3:00
NOV. 17	TIP-OFF TOURNAMENT		JAN. 14	PSU ALTOONA	6:00
NOV. 20	AT KENYON	7:00	JAN. 16	AT WESTMINSTER*	8:00
NOV. 28	AT THOMAS MORE*	7:30	JAN. 19	THOMAS MORE*	3:00
DEC. 1	BETHANY*	3:00	JAN. 23	WAYNESBURG*	8:00
DEC. 5	AT WAYNESBURG*	7:30	JAN. 26	AT BETHANY*	4:00
DEC. 8	SAINT VINCENT*	3:00	JAN. 30	PITT-TITUSVILLE*	8:00
DEC. 12	AT OBERLIN	7:30	FEB. 2	AT SAINT VINCENT*	6:00
DEC. 28-	YORK (PA.) COLLEGE		FEB. 6	AT WASH. & JEFF.*	8:00
DEC. 29	HOLIDAY TOURNAMENT		FEB. 9	GENEVA*	3:00
JAN. 3	PENN ST. BEAVER	7:00	FEB. 13	WESTMINSTER*	8:00
JAN. 5	AT GENEVA*	3:00	FEB. 16	AT THIEL*	3:00
JAN. 9	WASH. & JEFF.*	8:00	FEB. 19-23	PRESIDENTS' ATHLETIC CONFERENCE TOURNAMENT	

*-PRESIDENTS' ATHLETIC CONFERENCE GAME

HOME GAMES IN ALL CAPS