



# GROVE CITY COLLEGE MEN'S SOCCER



# 2014

# TABLE OF CONTENTS

## QUICK FACTS

Institution \_\_\_\_\_ Grove City College  
 Location \_\_\_\_\_ Grove City, Pa.  
 Founded \_\_\_\_\_ 1876  
 Enrollment \_\_\_\_\_ 2,500  
 Colors \_\_\_\_\_ Crimson and White  
 Nickname \_\_\_\_\_ Wolverines  
 Affiliation \_\_\_\_\_ NCAA Division III  
 Conference \_\_\_\_\_ Presidents' Athletic  
 Home Field \_\_\_\_\_ College Field  
 President \_\_\_\_\_ Paul McNulty, J.D.  
 Alma Mater \_\_\_\_\_ Grove City, 1980  
 Athletic Director \_\_\_\_\_ Dr. Don Lyle  
 Alma Mater \_\_\_\_\_ Muskingum, 1971  
 Assistant A.D. \_\_\_\_\_ Todd Gibson  
 Alma Mater \_\_\_\_\_ Grove City, 2002  
 Compliance Coordinator \_\_\_\_\_ Mike Dreves  
 Alma Mater \_\_\_\_\_ Grove City, 1997  
 Head Coach \_\_\_\_\_ Mike Dreves  
 Alma Mater \_\_\_\_\_ Grove City, 1997  
 Career Record \_\_\_\_\_ 74-62-21 (9th year)  
 At Grove City \_\_\_\_\_ Same  
 First Year of Program \_\_\_\_\_ 1938  
 All-Time Record \_\_\_\_\_ 511-339-81  
 Head Trainer \_\_\_\_\_ Kay Mitchell Emigh  
 Assistant Trainer \_\_\_\_\_ Rick Hawke  
 Athletic Office Mgr \_\_\_\_\_ Kim Iliff  
 Equipment Mgr \_\_\_\_\_ Larry Freeman  
 Equipment Mgr \_\_\_\_\_ Jim Richardson

## CONTACT INFORMATION

### Head Coach Mike Dreves

Office Telephone \_\_\_\_\_ 724-458-2151  
 Best Time to Call \_\_\_\_\_ Mornings  
 E-mail \_\_\_\_\_ mfdreves@gcc.edu

...

### Sports Info. Director Ryan Briggs

Office Telephone \_\_\_\_\_ 724-458-3365  
 Office Fax \_\_\_\_\_ 724-458-3855  
 Home Telephone \_\_\_\_\_ 724-748-3718  
 E-mail \_\_\_\_\_ rabriggs@gcc.edu

...

### Grove City Athletic Department

Dept. Telephone \_\_\_\_\_ 724-458-2900  
 Dept. Fax \_\_\_\_\_ 724-458-3855  
 Web Site \_\_\_\_\_ www2.gcc.edu/sports

## CREDITS

Editor \_\_\_\_\_ Ryan Briggs, SID  
 Associate Editor \_\_\_\_\_ Robert Audia

Head shots by Gregg Studio, Grove City, Pa.  
 Action shots by Dave Miller/ADM  
 Photography, Darlington, Pa.,

Printing by SCP Group, Sharon, Pa.

<b>HEAD COACH MIKE DREVES</b>	<b>3</b>
<b>ASSISTANT COACH RYAN EDWARDS</b>	<b>3</b>
<b>2014 SEASON PREVIEW</b>	<b>4-5</b>
<b>RETURNING LETTERWINNERS</b>	
<b>STEPHEN BETTERIDGE (PITTSFORD, N.Y.)</b>	<b>6</b>
<b>JAKE BOTZENHART (WAXHAW, N.C.)</b>	<b>6</b>
<b>JORDAN CARMICHAEL (WEST MILFORD, N.J.)</b>	<b>6</b>
<b>DREW CYPHER (FAIRPORT, N.Y.)</b>	<b>7</b>
<b>GEORGE DeAUGUSTINO (CRANBERRY TOWNSHIP, PA.)</b>	<b>7</b>
<b>FRANK HUEBER (PHILADELPHIA, PA.)</b>	<b>7</b>
<b>NICH LEAMAN (LANCASTER, PA.)</b>	<b>8</b>
<b>SETH LOEW (CENTER VALLEY, PA.)</b>	<b>8</b>
<b>JUSTIN PHILLIPS (SIMI VALLEY, CALIF.)</b>	<b>9</b>
<b>DALE REESE IV (ROCKY HILL, CONN.)</b>	<b>9</b>
<b>KYLE RICHERT (SEWICKLEY, PA.)</b>	<b>10</b>
<b>JONATHAN ROTHGEB (STATE COLLEGE, PA.)</b>	<b>10</b>
<b>TIM SHACKLETON (MALVERN, PA.)</b>	<b>10</b>
<b>MIKE SHUPP (EPHRATA, PA.)</b>	<b>11</b>
<b>BEN WEAVER (YORK, PA.)</b>	<b>11</b>
<b>DAVID WURLINGER (BELLE VERNON, PA.)</b>	<b>11</b>
<b>2013 IN REVIEW</b>	<b>12-13</b>
<b>RECORD BOOK</b>	<b>14</b>
<b>ALL-TIME ALL-AMERICANS/ALL-REGION</b>	<b>14</b>
<b>PROGRAM HISTORY</b>	<b>15-17</b>
<b>ALL-TIME RESULTS</b>	<b>18-21</b>
<b>GROVE CITY COLLEGE ATHLETIC HALL OF FAME</b>	<b>22</b>
<b>ABOUT THE PRESIDENTS' ATHLETIC CONFERENCE</b>	<b>23</b>
<b>GROVE CITY COLLEGE SPORTS</b>	<b>24-25</b>
<b>ABOUT GROVE CITY COLLEGE</b>	<b>26</b>
<b>GROVE CITY COLLEGE ATHLETIC FACILITIES</b>	<b>27</b>
<b>2014 SCHEDULE</b>	<b>28</b>

# HEAD COACH MIKE DREVES



Mike Dreves enters his ninth season as Grove City College's head men's soccer coach. In his first eight seasons, Dreves has guided the Wolverines to 74 total wins and seven Presidents' Athletic Conference Tournament appearances.

The 2011 Wolverines recorded 12 wins overall, including a 6-1-1 conference mark. Grove City qualified for the Eastern College Athletic Conference Southern Championship Tournament. In 2010, Dreves directed Grove City to 15 victories and to the championship match of the ECAC Tournament.

In 2006 -- his first season at the helm -- Grove City advanced to the ECAC semifinals after upsetting top-seeded Swarthmore in the quarterfinals.

Last year, Grove City went 8-5-6 overall, including a 4-1-3 conference record. The Wolverines set an NCAA Division III record by playing 11 overtime matches.

A 1997 Grove City College graduate, Dreves took over as head coach in June 2006 after serving as an assistant for five seasons under retired head coach Dr. Don Lyle.

As an assistant coach, he helped the Wolverines post four winning seasons, an average of 11 wins per season and two postseason berths. In 2005, Grove City captured its first-ever Presidents' Athletic Conference Championship Tournament title with a 2-1 victory over top-seeded Washington & Jefferson. The Wolverines advanced to the Eastern College Athletic Conference Southern Championship Tournament finals and finished 2005 with a 13-6-5 record.

In addition to excelling on the field, Grove City players have also fared well in the classroom. The program earned the National Soccer Coaches Association of America (NSCAA) Team Academic Award each year from 2008 to 2012. Grove City also received the NSCAA Ethics Award in 2009.

Dreves earned four letters as a player at Grove City from 1993-96. He captained the 1995 and 1996 teams and helped lead the Wolverines to the 1996 PAC and ECAC titles. The 1996 team earned the program's first PAC title and also posted a program-record 16 victories. He still holds the program record for career assists with 17.

Dreves' coaching career began at the scholastic level. He guided the Titusville (Pa.) High School boys' soccer program from 1997-2000, directing the Rockets to 39 wins and one Tri-County Athletic Conference championship (1998) in four seasons.

He then joined the Grove City coaching staff prior to the start of the 2001 season.

Dreves graduated from Grove City in May 1997 with a bachelor's degree in mathematics/secondary education. He then earned his master's degree in exercise science at nearby Slippery Rock University. Dreves has also attained the NSCAA "Premier" license as well as the United States Soccer Federation's "A" license.

He taught mathematics at both Titusville (1997-2001) and Mercer (2001-06) High Schools before coming to the College. Dreves joined the Grove City athletic department on a full-time basis in June 2006 as an assistant professor of physical education and as Fitness Room Coordinator. In June 2012, Dreves became the athletic department's compliance coordinator.

He lives in Pine Township with his wife Sue (also a 1997 Grove City graduate) and their two sons, Joshua and Isaac.

# ASSISTANT COACH RYAN EDWARDS



Ryan Edwards enters his fifth season as an assistant men's soccer coach at Grove City College.

Edwards joined the Grove City program prior to the start of the 2010 season and helped the Wolverines to a 15-6-2 mark, along with a berth in the Eastern College Athletic Conference Southern Championship Tournament finals.

Overall, Grove City owns a 43-26-10 mark with Edwards on the coaching staff.

Edwards came to Grove City after playing four seasons at perennial national powerhouse Messiah College. He helped the Falcons to national titles in 2004, 2005 and 2006. As a senior in 2007, Edwards helped Messiah advance to the national semifinals.

While at Messiah, Edwards worked at the school's summer camps. He also worked at the United States Naval Academy's summer soccer camp.

Edwards works as a chemistry teacher for the Grove City Area School District. He lives

in Grove City with his wife, Lynn.



# 2014 SEASON PREVIEW

Grove City College head men's soccer coach Mike Dreves has many reasons to be optimistic about his team's success in the 2014 season.

Returning eight starters and 17 letterwinners from an 8-5-6 campaign in 2013 that included an NCAA all-divisions record 11 overtime matches, four of five losses decided by just one goal and a nine-match unbeaten streak to close the season, the Wolverines appear poised to take that next step in 2014 and contend for a Presidents' Athletic Conference title.

Returning all three starters from the front line of a Wolverine offense that led the PAC in both corner kicks and shots, Grove City will look to junior Seth Loew to lead the offensive attack for the third year in a row.

A two-time All-PAC First Team selection and an NSCAA All-Great Lakes Region Third Team honoree in 2013, Loew has led the Wolverines in scoring in each of his first two seasons, including a team-best nine goals last year.

Senior Jordan Carmichael and junior Tim Shackleton join Loew on an experienced Wolverine front line. Carmichael joined Loew as two of just four players to start all 19 games last season, scoring two goals and adding a pair of assists. Shackleton started 18 games at forward, recording a goal and an assist.



**Junior forward Seth Loew led Grove City in goals and points last year. He is two-year starter up front for the Wolverines.**

Senior Jonathan Rothgeb has the versatility to compete for a starting job in multiple positions this season, including up front. While playing as a wing for the majority of his career, Rothgeb also made two of his three starts last season at left back before suffering a season-ending injury.

Sophomore David Wurmlinger looks to return from an injury that cost him more than half his freshman campaign to battle for a starting role at forward. Wurmlinger netted two goals and added an assist despite playing in just nine matches.

Sophomore Stephen Betteridge will compete for a starting job both at forward and in the midfield for the Wolverines after seeing time at both positions in 2013.

Betteridge saw action in all 19 games last season, and ranked third on the team with three goals.

In the midfield, the Wolverines return another First Team All-PAC selection in sophomore Dale Reese. Reese started all 19 games, sharing the team lead with Loew in assists (3) while ranking second in both goals (7) and total points (17).

In addition, Reese recorded six goals and one assist in conference games for a PAC-best 13 points in league play.



**Junior Tim Shackleton is a returning starter and two-year letterman at forward for Grove City. He will be counted upon for offensive production in 2014.**

# 2014 SEASON PREVIEW



**Senior midfielder Mike Shupp returns for his fourth season after lettering in each of his first three years at Grove City.**

Joining Reese in the midfield is junior and All-PAC Honorable Mention selection Justin Phillips. After missing the early part of the year due to injury, Phillips worked his way back into the rotation to start the final seven games of 2014.

Seniors Mike Shupp and Kyle Richert will both compete for starting roles in the midfield for Grove City. Shupp started seven games in the midfield last season while Richert, who returns after sitting out last season, made five starts during the 2012 campaign.

Sophomore Frank Hueber and junior Jonathan Mathes will each factor into the equation at midfield for the Wolverines. Hueber played in all 19 games as a freshman while Mathes looks to see an increased role after missing much of last year due to injury.

The Wolverines biggest hole to fill exists on the back line after losing four-year starter and two-time

All-PAC honoree Dan Adams to graduation. However, senior George DeAugustino, sophomore Nich Leaman, and junior Jake Botzenhart all return as starters to provide stability defensively.

DeAugustino, who owns a team-high 50 career starts, looks to return to the Wolverines in full strength as the anchor of the defense after battling injuries throughout his junior year.

Leaman started all 19 games as a freshman at outside back while Botzenhart started 14 games at inside back a year ago.

Sophomore Drew Cypher will also compete for a starting role on the back line after starting six games during his freshman campaign.

In goal, junior Ben Weaver looks to take over full-time goalkeeping duties after splitting time as a starter during both the 2012 and 2013 campaigns.

Last year, Weaver posted a 4-1-1 record, three shutouts and a 0.74 goals against average while seeing action in seven games and starting five.

Grove City hosts NAIA member Mount Vernon Nazarene University to open the 2014 season on August 29. The Wolverines will travel to Waynesburg for their conference opener on October 3.



**Junior Ben Weaver will likely take over as Grove City's starting goalkeeper in 2014 after posting an 0.74 goals against average.**

# RETURNING LETTERWINNERS



**STEPHEN  
BETTERIDGE**  
SOPHOMORE • 6-1 • MIDFIELDER  
PITTSFORD, N.Y.  
PITTSFORD MENDON

**6**


Returning letterwinner who will battle for full-time starting spot in 2014. **AS A FRESHMAN:** Earned first letter after playing in 19 matches ... Made first start October 22, 2013 in victory at Point Park ... Team went 2-0-2 with him in starting lineup ... Scored first collegiate goal against Heidelberg September 24. **NOTABLE:** Business management major.

**CAREER STATISTICS**

Year	GP-GS	G	A	Pts.
2013	19-4	3	0	6
<b>Totals</b>	<b>19-4</b>	<b>3</b>	<b>0</b>	<b>6</b>



Sophomore Stephen Betteridge appeared in all 19 games as a rookie in 2013. He will look to earn a full-time starting spot this season.



**JAKE  
BOTZENHART**  
JUNIOR • 6-0 • DEFENDER  
WAXHAW, N.C.  
PARKWOOD

**21**

Returning starter and letterman at center back ... Will look to remain key component of Grove City defense in 2014. **AS A SOPHOMORE:** Earned first letter ... Started and appeared in 14 matches ... Helped Grove City to six shutouts ... Started final nine matches of season ... Wolverines went 5-0-4 in those nine matches. **AS A FRESHMAN:** Appeared in five matches as a reserve defender. **NOTABLE:** Accounting major.

**CAREER STATISTICS**

Year	GP-GS	G	A	Pts.
2012	5-0	0	0	0
2013	14-14	0	0	0
<b>Totals</b>	<b>19-14</b>	<b>0</b>	<b>0</b>	<b>0</b>



**JORDAN  
CARMICHAEL**  
JUNIOR • 5-10 • FORWARD  
WEST MILFORD, N.J.  
WEST MILFORD

**4**

Three-year letterman at forward for Grove City ... Returning starter who will likely be integral force at both ends of field. **AS A JUNIOR:** Started all 19 matches, earning third letter ... Scored game-winning goal in 3-2 win at Muskingum September 18, 2013. **AS A SOPHOMORE:** Earned second letter after playing in all 19 matches ... Named Presidents' Athletic Conference Offensive Player of the Week after recording three goals and an assist in win at Saint Vincent October 24, 2012 ... Started first six matches of season. **AS A FRESHMAN:** Earned first letter after playing in 19 matches ... Tied for team lead with four assists ... Made first collegiate start September 14, 2011 at Penn State Behrend. **NOTABLE:** Political science major.

**CAREER STATISTICS**

Year	GP-GS	G	A	Pts.
2011	19-4	0	4	4
2012	19-7	3	1	7
2013	19-19	2	2	6
<b>Totals</b>	<b>57-30</b>	<b>5</b>	<b>7</b>	<b>17</b>

# RETURNING LETTERWINNERS



**DREW  
CYPHER**  
SOPHOMORE • 6-0 • DEFENDER  
FAIRPORT, N.Y.  
FAIRPORT **7**

Returning letterwinner who will battle for full-time starting spot at defender in 2014. **AS A FRESHMAN:** Earned first letter ... Appeared in 11 matches, including six starts in September 2013 ... Made first start September 4, 2013 against visiting Allegheny. **NOTABLE:** Political science major ... Dean's List student ... Named to Presidents' Athletic Conference Academic Honor Roll.

**CAREER STATISTICS**

Year	GP-GS	G	A	Pts.
2013	11-6	0	0	0
<b>Totals</b>	<b>11-6</b>	<b>0</b>	<b>0</b>	<b>0</b>




**FRANK  
HUEBER**  
SOPHOMORE • 6-0 • MIDFIELDER  
PHILADELPHIA, PA.  
CALVARY CHRISTIAN **9**

Second-year performer who will challenge for full-time starting assignment this fall ... Returning letterwinner. **AS A FRESHMAN:** Earned first letter ... Played in all 19 matches, including six starts ... Made first collegiate start September 14, 2013 against Baldwin-Wallace ... Scored game-winning goal at Point Park October 22 ... Assisted team's goal in 1-1 draw at Carnegie Mellon September 28. **NOTABLE:** Entrepreneurship major.

**CAREER STATISTICS**

Year	GP-GS	G	A	Pts.
2013	19-6	1	1	3
<b>Totals</b>	<b>19-6</b>	<b>1</b>	<b>1</b>	<b>3</b>



**GEORGE  
DeAUGUSTINO**  
SENIOR • 5-9 • DEFENDER  
CRANBERRY TOWNSHIP, PA.  
SENECA VALLEY **2**

Three-year starter at outside back who will again likely be integral part of Grove City defense. **AS A JUNIOR:** Returned from early-season injury to start final 12 matches of 2013 season ... Named Second Team All-Presidents' Athletic Conference ... Team went 5-2-5 with him in lineup. **AS A SOPHOMORE:** Started all 19 matches ... One of two underclassmen to start every match ... Helped Wolverines post eight shutouts ... Earned second letter. **AS A FRESHMAN:** Started all 19 matches, earning first letter ... Helped Grove City record six shutouts in 2011 ... Recorded first collegiate assist at Waynesburg October 7. **NOTABLE:** Business management major.

**CAREER STATISTICS**

Year	GP-GS	G	A	Pts.
2011	19-19	0	1	1
2012	19-19	0	0	0
2013	12-12	0	0	0
<b>Totals</b>	<b>50-50</b>	<b>0</b>	<b>1</b>	<b>1</b>



Sophomore Frank Hueber appeared in all 19 matches during the 2013 season.

# RETURNING LETTERWINNERS



**NICH LEAMAN**  
 SOPHOMORE • 6-0 • DEFENDER  
 LANCASTER, PA.  
 HEMPFIELD

10

Returning starter and letterwinner at defender ... Will look to remain integral part of Wolverine defense in 2014. **AS A FRESHMAN:** Earned first letter after starting all 19 matches in 2014 ... Helped Wolverines record seven shutouts ... Made collegiate debut August 30, 2013 at Frostburg State. **NOTABLE:** Accounting/finance major.

CAREER STATISTICS				
Year	GP-GS	G	A	Pts.
2013	19-19	0	0	0
<b>Totals</b>	<b>19-19</b>	<b>0</b>	<b>0</b>	<b>0</b>



Sophomore Nich Leaman started all 19 matches in 2013 and is expected to again be a key part of the Wolverine defense this season.



Junior Seth Loew earned First Team All-PAC honors in his first two seasons. He also earned All-Region in 2013.



**SETH LOEW**  
 JUNIOR • 5-10 • FORWARD  
 CENTER VALLEY, PA.  
 SOUTHERN LEHIGH

18

Two-year starter and letterwinner for Grove City ... One of region's top returning offensive threats ... Will likely again be key cog in Wolverine offensive attack in 2014. **AS A SOPHOMORE:** Earned second letter after starting all 19 matches ... Named Third Team NSCAA All-Great Lakes Region ... Became first Grove City sophomore to be named All-Region ... Earned First Team All-Presidents' Athletic Conference ... Led team in goals and points ... Shared team lead in assists ... Recorded hat trick and assist in win at Hilbert September 7, 2013. **AS A FRESHMAN:** Led Grove City in goals and points, earning first letter ... Named First Team All-PAC. Started final 10 matches of season ... Had goal and two assists in win at Saint Vincent October 24, 2012 ... Scored twice in win over Bethany September 29 ... Recorded game-winning goal in win over Westminster October 27. **NOTABLE:** Electrical engineering major.

CAREER STATISTICS				
Year	GP-GS	G	A	Pts.
2012	19-12	6	3	15
2013	19-19	9	3	21
<b>Totals</b>	<b>38-31</b>	<b>15</b>	<b>6</b>	<b>36</b>



# RETURNING LETTERWINNERS



**JUSTIN  
PHILLIPS**

JUNIOR • 6-0 • MIDFIELDER  
SIMI VALLEY, CALIF.  
OAKS CHRISTIAN

12

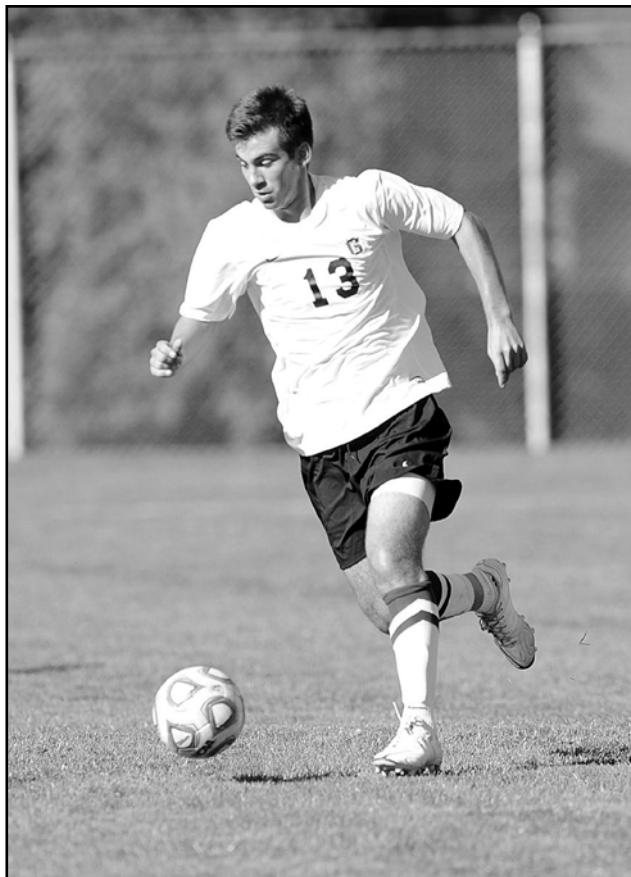
Two-year starter and letterwinner ... Will look to regain full-time starting spot in 2014. **AS A SOPHOMORE:** Earned second letter ... Started final five matches of 2013 season ... Named Honorable Mention All-Presidents' Athletic Conference ... Made seven total starts. **AS A FRESHMAN:** Started all 19 matches at midfielder, earning first letter ... Only rookie to start all 19 matches in 2012 ... Scored first collegiate goal September 8 against Hilbert. **NOTABLE:** Industrial management major.

**CAREER STATISTICS**

Year	GP-GS	G	A	Pts.
2012	19-19	1	0	2
2013	14-7	0	0	0
<b>Totals</b>	<b>33-26</b>	<b>1</b>	<b>0</b>	<b>2</b>



Junior Justin Phillips earned Honorable Mention All-Presidents' Athletic Conference recognition following the 2013 season.



Sophomore Dale Reese IV scored six of his seven goals during conference play in 2013. He is a returning First Team All-PAC honoree.



**DALE  
REESE IV**

SOPHOMORE • 6-0 • MIDFIELDER  
ROCKY HILL, CONN.  
LOOMIS CHAFFEE

13

Returning starter and letterwinner ... One of top returning offensive threats in Presidents' Athletic Conference. **AS A FRESHMAN:** Started all 19 matches, earning first letter ... Earned First Team All-PAC recognition ... Second on team with seven goals and 17 points ... Shared team lead in assists ... Scored six of seven goals in league play ... Recorded both goals in 2-1 win over archrival Geneva October 16, 2013. **NOTABLE:** Finance major.

**CAREER STATISTICS**

Year	GP-GS	G	A	Pts.
2013	19-19	7	3	17
<b>Totals</b>	<b>19-19</b>	<b>7</b>	<b>3</b>	<b>17</b>

RETURNING LETTERWINNERS



# RETURNING LETTERWINNERS



## KYLE RICHERT

SENIOR • 6-0 • MIDFIELDER  
SEWICKLEY, PA.  
QUAKER VALLEY

5

Two-year letterwinner who will contend for starting spot in midfield this season ... Returns to squad after missing 2013 campaign. **AS A SOPHOMORE:** Earned second letter after playing in 18 games ... Made career-high five starts ... Scored first collegiate goal September 8, 2012 in win over Hilbert. **AS A FRESHMAN:** Played in 13 matches, earning first collegiate letter ... Made first collegiate start October 26, 2011 against Saint Vincent. **NOTABLE:** Finance major.

### CAREER STATISTICS

Year	GP-GS	G	A	Pts.
2011	13-1	0	0	0
2012	18-5	1	0	2
<b>Totals</b>	<b>31-6</b>	<b>1</b>	<b>0</b>	<b>2</b>



## TIM SHACKLETON

JUNIOR • 5-10 • FORWARD  
MALVERN, PA.  
GREAT VALLEY

3

Returning starter at forward ... Two-year letterwinner who will look to be key offensive force in 2014. **AS A SOPHOMORE:** Started 18 matches, earning second letter ... Scored game-winning goal against Saint Vincent October 30, 2013 ... Assisted tying goal in regular season finale against Thomas More three days later. **AS A FRESHMAN:** Played in 18 matches, earning first letter ... Made first collegiate start at Heidelberg September 26, 2012 ... Scored goal in collegiate debut August 31 at Susquehanna ... Scored game-winning goal against Point Park September 21. **NOTABLE:** Middle level science/math education.

### CAREER STATISTICS

Year	GP-GS	G	A	Pts.
2012	18-3	3	1	7
2013	18-18	1	1	3
<b>Totals</b>	<b>36-21</b>	<b>4</b>	<b>2</b>	<b>10</b>



## JONATHAN ROTHGEB

SENIOR • 5-11 • FORWARD  
STATE COLLEGE, PA.  
STATE COLLEGE

23

Two-year letterman who will challenge for full-time starting spot up front this season. **AS A JUNIOR:** Earned second letter ... Played in 11 matches, including three starts ... Made first start of season at Muskingum September 18, 2013. **AS A SOPHOMORE:** Played in all 19 matches, earning first letter ... Scored in first collegiate start October 6, 2012 against Waynesburg ... Scored once and assisted two other goals in home opener against Hilbert September 8. **AS A FRESHMAN:** Played in seven matches as a reserve in 2011. **NOTABLE:** Finance major.

### CAREER STATISTICS

Year	GP-GS	G	A	Pts.
2011	7-0	0	0	0
2012	19-2	2	2	6
2013	11-3	0	0	0
<b>Totals</b>	<b>37-5</b>	<b>2</b>	<b>2</b>	<b>6</b>



Senior Jonathan Rothgeb has made 37 career appearances for Grove City. He is a two-year letterwinner.

# RETURNING LETTERWINNERS



**MIKE SHUPP**  
 SENIOR • 6-0 • MIDFIELDER  
 EPHRATA, PA.  
 LITITZ CHRISTIAN

**15**

Three-year letterwinner who will contend for full-time starting assignment in midfield this season. **AS A JUNIOR:** Earned third letter ... Made seven starts and 16 total appearances ... Team went 4-1-2 with him in starting lineup. **AS A SOPHOMORE:** Played in 15 matches, earning second letter ... Scored in first start of season September 29, 2012 against Bethany ... Also started October 3 against Thomas More. **AS A FRESHMAN:** Appeared in all 19 matches as a rookie, earning first letter ... Scored game-winning goal in win over Mount Union September 20, 2011 ... Also made first collegiate start in Mount Union match. **NOTABLE:** International business major.

CAREER STATISTICS				
Year	GP-GS	G	A	Pts.
2011	19-11	1	0	2
2012	15-2	1	0	2
2013	16-7	0	1	1
<b>Totals</b>	<b>50-20</b>	<b>2</b>	<b>1</b>	<b>5</b>

## GROVE CITY'S ACTIVE CAREER STATISTICAL LEADERS

- Matches Played:** 57, Jordan Carmichael  
50, George DeAugustino  
50, Mike Shupp
- Matches Started:** 50, George DeAugustino  
31, Seth Loew  
30, Jordan Carmichael
- Goals:** 15, Seth Loew  
7, Dale Reese IV  
5, Jordan Carmichael
- Assists:** 7, Jordan Carmichael  
6, Seth Loew  
3, Dale Reese IV
- Saves:** 51, Ben Weaver
- Save Percentage:** .785, Ben Weaver



**BEN WEAVER**  
 JUNIOR • 6-1 • GOALKEEPER  
 YORK, PA.  
 DALLASTOWN

**0**

Two-year letterwinner in goal for Grove City ... Has inside track for starting spot in 2014. **AS A SOPHOMORE:** Earned second letter after playing in seven matches ... Made six starts and recorded three shutouts ... Posted 0.74 goals against average. **AS A FRESHMAN:** Started eight matches, earning first collegiate letter ... Made debut September 1, 2012 at Lebanon Valley ... Posted shutouts in conference play against Bethany (September 29) and Waynesburg (October 6). **NOTABLE:** Mechanical engineering major.

CAREER STATISTICS					
Year	GP-GS	GA	Saves	Save Pct.	W-L-T
2012	8-8	9	33	.786	3-4-1
2013	7-5	5	18	.783	4-1-1
<b>Totals</b>	<b>15-13</b>	<b>14</b>	<b>51</b>	<b>.785</b>	<b>7-5-2</b>



**DAVID WURMLINGER**  
 SOPHOMORE • 5-9 • FORWARD  
 BELLE VERNON, PA.  
 BELLE VERNON

**16**

Second-year player who will battle for full-time spot in lineup in 2014 ... Returning letterman. **AS A FRESHMAN:** Played in first nine matches before being sidelined ... Earned first letter ... Started season opener at Frostburg State August 30, 2013 ... Scored twice in win at Hilbert September 7. **NOTABLE:** Electrical engineering major.

CAREER STATISTICS				
Year	GP-GS	G	A	Pts.
2013	9-3	2	1	5
<b>Totals</b>	<b>9-3</b>	<b>2</b>	<b>1</b>	<b>5</b>



# 2013 IN REVIEW

Sometimes 90 minutes of soccer just isn't enough. The Grove City College men's soccer team found that out on a regular basis during the 2013 season, as the Wolverines played a total of 166 minutes and 53 seconds during 19 total overtime periods while tying an NCAA All-Divisions record with 11 overtime matches amongst their 19 games.

The Wolverines posted a 3-2-6 record in those 11 overtime matches en route to an 8-5-6 overall record and their seventh straight appearance in the Presidents' Athletic Conference tournament.

As in recent years, defense proved to be the key to Grove City's success, as the Wolverines produced seven shutouts and held opponents to a 0.72 goals against average, good for the 32nd-best mark in the nation.

Standout forward Seth Loew became just one of four sophomores out of 37 members selected to the NSCAA Division III All-Great Lakes Region Team, earning Third Team honors after leading the Wolverines with nine goals and 21 points and sharing the team lead with three assists.



**Senior defender Dan Adams started 18 matches for Grove City in 2013, helping the Wolverines post an aggregate 0.72 goals against average.**

Loew also earned a spot on the All-PAC First Team, as did freshman midfielder Dale Reese. Reese shared the assist lead with Loew and ranked second on the squad in both goals (7) and total points (17). His 13 points in PAC action (six goals, one assist) tied for the most among all players in league action.

Senior defender Daniel Adams, goalkeeper Brenden Alfery and junior defender George DeAugustino all earned spots on the All-PAC Second Team while sophomore Justin Phillips merited Honorable Mention.

Alfery teamed with fellow sophomore Ben Weaver to form one of the top goalkeeping tandems in Grove City College history.

Alfery played and started in 12 games, recording three shutouts while leading the conference and ranking third among all NCAA Division III goalkeepers with a .895 save percentage - the second best mark in the Wolverine annals.

In addition, his PAC-best 0.69 goals against average ranked 24th nationally.

Weaver saw action in seven games, starting six and recording a 0.74 goals against average with three shutouts.

Junior forward Jordan Carmichael and freshman defender Nich Leaman joined Loew and Reese as the only players to start all 19 games in 2013.

The Wolverines wasted no time in the 2013 season showing their affinity for overtime, dropping a 1-0 double-overtime decision at Frostburg State and playing to a 0-0 double overtime draw against Buffalo State at the Frostburg State Tournament on August 30-31.

Grove City returned home for its home opener against Allegheny, but the Wolverines dropped a 1-0 decision to the Gators.

The scoring drought ended in a big way for the Wolverines just a few days later when they cruised to a 6-1 win at Hilbert on September 7.

Loew recorded his first career hat trick in the win, while freshman David Wurmlinger scored the first two goals of his collegiate career and Carmichael added one.

Following a 2-0 setback at eventual Allegheny Mountain Collegiate Conference champion Penn State Behrend on September 11, the Wolverines knocked off Baldwin-Wallace three days later, 1-0, on a Loew penalty kick eight minutes into overtime.

The Wolverines recorded their second consecutive overtime win with a 3-2 double-overtime victory at Muskingum on Carmichael's golden goal 21 seconds into the second extra frame on September 18.

Loew scored first for the Wolverines while Reese netted his first collegiate goal in the 88th minute, sending the game into overtime.

# 2013 IN REVIEW

After a 2-1 overtime setback against Heidelberg, on the 24th, the Wolverines rebounded four days later by battling nationally-ranked Carnegie Mellon to a 1-1 tie, as freshman Frank Hueber found Loew for a breakaway goal just 13 seconds into the second half.

Grove City opened its conference slate against Waynesburg on October 4. Despite a commanding 25-12 advantage in shots, the Wolverines couldn't find the back of the net in a 1-0 setback.

That would be the last loss the Wolverines would sustain in 2013, however, as Grove City closed the season by going 5-0-4 in its final nine games.

A pair of Reese goals lifted Grove City to a 2-0 win at Thiel on October 8 to open that stretch while Weaver earned the shutout in goal. The Wolverines followed with a 4-0 victory over visiting Bethany four days later, as sophomore Jon Mathes scored his first goal.

Senior Kyle Matherne, freshman Stephen Betteridge and Loew also scored while Alfery notched his first shutout of the season in goal.

The Wolverines extended the win streak to three with a 2-1 overtime victory over archrival Geneva on October 16. Reese scored twice, including the game-winner in the 98th minute.

After a scoreless draw with W&J on the 19th, the Wolverines followed with a 2-1 victory at NAIA member Point Park on October 22. Loew recorded his eighth goal of the season while Hueber netted his first collegiate goal for the game-winner in the 85th minute.

Senior goalkeeper Chris Burgan recorded his first win of the season.

Loew scored the lone Grove City goal in a 1-1 tie at Westminster on October 26, but the Wolverines responded with a 3-0 win over Saint Vincent four days later behind goals from Reese, sophomore Tim Shackleton and Betteridge.

The victory clinched Grove City's spot in the four-team PAC Championship Tournament.

Against four-time defending PAC champion Thomas More, winners of 11 straight coming into the game, Reese scored a game-tying goal in the 82nd minute and the Wolverine defense held on for a 1-1 double overtime draw on November 2.

With a 4-1-3 league record, the Wolverines earned the third seed in the conference tournament and traveled to second-seeded W&J for the PAC semifinals November 6.

Just like their regular season battle, the Wolverines and Presidents battled without a goal for 110 minutes.

But W&J advanced to the conference final by virtue of a 4-3 advantage in the penalty kick shootout, marking the second year in a row that Grove City fell in a shootout in the conference semifinals.

## 2013 RESULTS

Date	Opponent	Result	Score	Record
Aug. 30	Frostburg State	L	1-0 (2 OT)	0-1
Aug. 31	vs. Buffalo State	T	0-0 (2 OT)	0-1-1
Sept. 4	ALLEGHENY	L	1-0	0-2-1
Sept. 7	Hilbert	W	6-1	1-2-1
Sept. 11	PSU- Behrend	L	2-0	1-3-1
Sept. 14	BALDWIN-WALLACE	W	1-0 (OT)	2-3-1
Sept. 18	Muskingum	W	3-2 (2 OT)	3-3-1
Sept. 24	HEIDLBERG	L	2-1 (OT)	3-4-1
Sept. 28	Carnegie Mellon	T	1-1 (2 OT)	3-4-2
Oct. 4	WAYNESBURG*	L	1-0	3-5-2
Oct. 8	Thiel*	W	2-0	4-5-2
Oct. 12	BETHANY*	W	4-0	5-5-2
Oct. 16	GENEVA*	W	2-1 (OT)	6-5-2
Oct. 19	Wash. & Jeff.*	T	0-0 (2 OT)	6-5-3
Oct. 22	Point Park	W	2-1	7-5-3
Oct. 26	Westminster*	T	1-1 (2 OT)	7-5-4
Oct. 30	SAINT VINCENT*	W	3-0	8-5-4
Nov. 2	THOMAS MORE*	T	1-1 (2 OT)	8-5-5
Nov. 6	Wash. & Jeff.#	T	0-0 (2OT)	8-5-6

\*-Presidents' Athletic Conference Match

#-PAC Tournament

Home Matches in CAPS

## 2013 STATISTICS

Name	GP-GS	G	A	Pts.	GW
Seth Loew	19-19	9	3	21	1
Dale Reese	19-19	7	3	17	2
Stephen Betteridge	19-4	3	0	6	0
Jordan Carmichael	19-19	2	2	6	1
David Wurmlinger	9-3	2	1	5	1
Frank Hueber	19-6	1	1	3	1
Tim Shackleton	18-18	1	1	3	1
Kyle Matherne	15-11	1	0	2	1
Jonathan Mathes	14-0	1	0	2	0
Mike Shupp	16-7	0	1	1	0
Brian Wilkes	15-3	0	1	1	0
Austin Ridgley	3-0	0	1	1	0
Justin Phillips	14-7	0	0	0	0
Dan Adams	18-18	0	0	0	0
Jonathan Rothgeb	11-3	0	0	0	0
Nich Leaman	19-19	0	0	0	0
G. DeAugustino	12-12	0	0	0	0
Ben Hinkle	13-2	0	0	0	0
Jake Botzenhart	14-14	0	0	0	0
Kurt Witters	5-0	0	0	0	0
Drew Cypher	11-6	0	0	0	0
Marc Delio	3-0	0	0	0	0
<b>Total</b>	<b>19</b>	<b>27</b>	<b>14</b>	<b>68</b>	<b>8</b>
<b>Opponents</b>	<b>19</b>	<b>15</b>	<b>8</b>	<b>38</b>	<b>5</b>
	<b>GP-GS</b>	<b>Min</b>	<b>GA</b>	<b>Avg</b>	<b>Saves</b>
Brenden Alfery	12-12	1177:20	9	0.69	77
Ben Weaver	7-5	609:43	5	0.74	18
Chris Burgan	1-1	90:00	1	1.00	1
<b>Totals</b>	<b>19</b>	<b>1876:53</b>	<b>15</b>	<b>0.72</b>	<b>104</b>
<b>Opponents</b>	<b>19</b>	<b>1876:53</b>	<b>27</b>	<b>1.29</b>	<b>124</b>



# RECORD BOOK

## TEAM RECORDS

**Most Goals, Match:** 15, vs. Saint Francis, 1965  
15, vs. Saint Vincent, 1968

**Most Goals, Season:** 65, 1996  
54, 1965

**Margin of Victory:** 15 goals (twice)

**Most Shutouts, Season:** 12, 2010

**Most Victories, Season:** 16, 1996  
15, 2010

**Best Win Percentage:** 1.000, 1964 (9-0-0)  
1.000, 1956 (7-0-0)  
1.000, 1952 (6-0-0)

**Longest Win Streak:** 18, 1963-65

**Longest Unbeaten Streak:** 19, 1963-65

**Most Ties, Season:** 6, 2013

**Most Consecutive Ties:** 2, 1951

**Most Losses, Season:** 13, 2002

**Most Matches, Season:** 24, 2005, 2010

## INDIVIDUAL RECORDS

**Career Goals:** 63, Bob McNees, 2003-06  
48, Ross Emerson, 1951-52, 55-56  
46, Greg Kreutzberg, 1993-96

**Season Goals:** 25, Greg Kreutzberg, 1996  
19, Bob McNees, 2005  
18, Ross Emerson, 1955 (9 gms)  
18, Bob McNees, 2004

**Season Points:** 55, Greg Kreutzberg, 1996  
43, Bob McNees, 2005  
41, Bob McNees, 2004

## INDIVIDUAL - GAME

**Goals, Match:** 5, Ross Emerson (1955, Indiana, Pa.)  
4, Ross Emerson (1956, Case Tech)  
4, Bob Bishop (1964, St. Bonaventure)  
4, Chai Vathanakul (1965, St. Francis)  
4, Scott Gay (1966, St. Vincent)  
4, Pete Anselmo (1967, St. Francis)  
4, Bob McNees (2005, Thiel)

**Points, Match:** 10, Ross Emerson (Oct. 28, 1955 at Indiana, Pa.; 5 goals)

## NSCAA ALL-AMERICANS

Frank Sbrocco	1956	Hon. Mention, Outside Left
Peter Buttner	1958	First Team, Forward
Peter Buttner	1959	First Team, Forward
John Mulholland	1963	Hon. Mention, Fullback
Matthew Lux	1969	Second Team, Fullback
Bill Juergens	1986	Second Team, Back

## NSCAA REGIONAL ALL-AMERICANS

Chuck Harrington	1972	Hon. Mention, Fullback
Gary Eising	1975	Hon. Mention, Wing
Gary Eising	1976	Hon. Mention, Wing
Jon Bornholm	1977	Hon. Mention, Fullback
John Russell	1978	Hon. Mention, Halfback
John Russell	1979	Hon. Mention, Halfback
Gary Tissue	1979	Hon. Mention, Halfback
Dave Howard	1980	Hon. Mention, Fullback
Tony Caruso	1981	Second Team, Forward
Chris Barstow	1981	Hon. Mention, Fullback
Jim Pekins	1982	Hon. Mention, Back
Jim Pekins	1983	Hon. Mention, Back
Tom Shupe	1984	Second Team, Goalkeeper
Bill Juergens	1986	First Team, Back
Andy Renkey	1986	Second Team, Back
David Lakatos	1989	Second Team, Back
Greg Kreutzberg	1996	Forward
Sam Coffman	2001	Midfielder
Mike Koper	2003	Third Team, Back
Bob McNees	2006	Third Team, Forward
Chuck Witt	2010	Third Team, Midfielder
Josh Kern	2011	Second Team, Back
Seth Loew	2013	Third Team, Forward

## POSTSEASON APPEARANCES

1962	NCAA Atlantic Regional Tournament
1976	NCAA D-III Atlantic Regional Tournament
1980	NCAA D-III Pa.-Md. Regional Tournament
1995	ECAC Southern Tournament Semifinalist
1996	ECAC Southern Tournament Champion
2001	ECAC Southern Tournament Qualifier
2005	ECAC Southern Tournament Finalist
2006	ECAC Southern Tournament Semifinalist
2010	ECAC Southern Tournament Finalist
2011	ECAC Southern Tournament Qualifier

## COACHING RECORDS

Bob Thorn (1938-56)	72-28-15	.691
Dan Leviton (1957-61)	18-19-3	.488
Cliff Wettig (1962-70)	65-20-4	.753
Russ Trimmer (1971)	5-3-1	.611
Dr. Don Lyle (1972-2005)	277-206-37	.568
Mike Dreves (2006-)	74-62-21	.538

**Total (74 Years)**

**511-338-81**



Thorn



Wettig



Lyle

# PROGRAM HISTORY

## Year-By-Year Records

Year	W-L-T	Coach	Year	W-L-T	Coach
1938	1-2-1	Bob Thorn	1976	10-3-1	Don Lyle
1939	2-2-0	Bob Thorn	1977	11-3-0	Don Lyle
1940	3-3-0	Bob Thorn	1978	8-3-1	Don Lyle
1941	5-2-0	Bob Thorn	1979	10-2-0	Don Lyle
1942	5-1-0	Bob Thorn	1980	9-5-0	Don Lyle
1943	No Games - World War II		1981	6-7-0	Don Lyle
1944	No Games - World War II		1982	6-7-1	Don Lyle
1945	2-1-2	Bob Thorn	1983	3-8-3	Don Lyle
1946	4-2-1	Bob Thorn	1984	7-7-0	Don Lyle
1947	4-4-1	Bob Thorn	1985	9-4-1	Don Lyle
1948	5-0-3	Bob Thorn	1986	11-2-1	Don Lyle
1949	2-4-2	Bob Thorn	1987	6-5-2	Don Lyle
1950	6-2-0	Bob Thorn	1988	5-7-1	Don Lyle
1951	2-1-3	Bob Thorn	1989	6-6-1	Don Lyle
1952	6-0-0	Bob Thorn	1990	7-6-1	Don Lyle
1953	6-1-1	Bob Thorn	1991	8-6-0	Don Lyle
1954	7-1-0	Bob Thorn	1992	7-7-1	Don Lyle
1955	5-2-1	Bob Thorn	1993	3-11-1	Don Lyle
1956	7-0-0	Bob Thorn	1994	4-9-0	Don Lyle
1957	6-2-0	Dan Leviton	1995	10-6-0	Don Lyle
1958	5-3-0	Dan Leviton	1996	16-2-0	Don Lyle
1959	4-4-1	Dan Leviton	1997	6-8-1	Don Lyle
1960	1-5-2	Dan Leviton	1998	12-7-0	Don Lyle
1961	2-5-0	Dan Leviton	1999	11-7-2	Don Lyle
1962	6-4-1	Cliff Wettig	2000	10-9-1	Don Lyle
1963	6-3-0	Cliff Wettig	2001	13-7-1	Don Lyle
1964	9-0-0	Cliff Wettig	2002	5-13-2	Don Lyle
1965	8-0-1	Cliff Wettig	2003	11-8-3	Don Lyle
1966	7-1-1	Cliff Wettig	2004	12-7-1	Don Lyle
1967	6-4-0	Cliff Wettig	2005	13-6-5	Don Lyle
1968	7-3-1	Cliff Wettig	2006	11-7-2	Mike Dreves
1969	9-2-0	Cliff Wettig	2007	6-8-4	Mike Dreves
1970	7-3-0	Cliff Wettig	2008	6-11-3	Mike Dreves
1971	5-3-1	Russ Trimmer	2009	8-10-1	Mike Dreves
1972	4-4-1	Don Lyle	2010	15-6-2	Mike Dreves
1973	5-5-2	Don Lyle	2011	12-6-1	Mike Dreves
1974	6-4-2	Don Lyle	2012	8-9-2	Mike Dreves
1975	7-5-1	Don Lyle	2013	8-5-6	Mike Dreves

### All-Time Series Against Traditional Opponents

Opponent	Series Began	Last Meeting	W	L	T	Opponent	Series Began	Last Meeting	W	L	T
Allegheny	1938	2013	42	22	6	PSU Behrend	1975	2013	21	15	3
Bethany	1977	2013	15	30	2	Pitt-Bradford	1985	2007	23	0	0
Carnegie Mellon	1938	2013	17	30	3	Pitt-Greensburg	1998	2004	4	3	0
Frostburg St.	1951	2013	10	12	6	Point Park	1973	2013	6	4	0
Geneva	1975	2013	16	11	4	Saint Vincent	1966	2013	16	5	1
Hiram	1984	1991	2	3	3	Slippery Rock	1938	2000	25	33	9
La Roche	1994	2007	10	0	2	Thiel	1945	2013	24	3	2
Lake Erie	1995	2007	10	1	0	Thomas More	2005	2013	5	6	1
Messiah	2000	2008	1	5	0	Wash. & Jeff.	1974	2013	21	19	10
Mount Union	1964	2011	10	5	1	Waynesburg	1991	2013	25	3	2
PSU Altoona	2001	2009	1	2	2	Westminster	1946	2013	20	21	2



# PROGRAM HISTORY

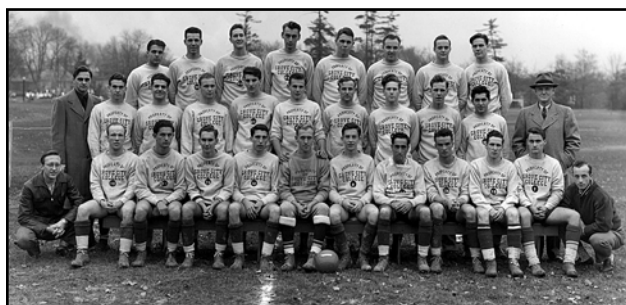
Since its humble beginnings in 1938, the Grove City College men's soccer program has emerged as one of the region's finest. Few programs can match the sustained level of excellence that the Grove City program has attained over the last 70 years.

The soccer program began in 1938 under the direction of legendary coach/athletic director Robert E. "Bob" Thorn.

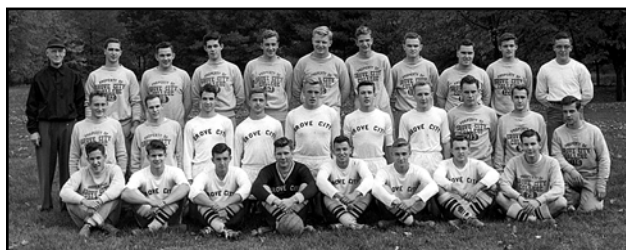
Grove City's rise to the area's elite began during those formative years as the Wolverines posted a 10-3 record in the 1941-42 seasons. Following World War II, Grove City continued to excel on the field.

In 1948, the Wolverines recorded their first undefeated season by going 5-0-3. Four years later, Grove City completed its first perfect season by winning all six matches on the 1952 schedule.

Grove City followed with an 18-4-2 mark over the next three seasons. In 1956, Grove City went 7-0-0. Frank



Grove City's 1948 team (above) went 5-0-3 while the 1952 team (below) went 6-0-0.



Sbrocco became the College's first All-American as he earned Honorable Mention at outside left that season. Ross Emerson graduated as the squad's all-time leading scorer with 48 goals.

Following Thorn's retirement, Dan Leviton took over as head coach from 1957-61. During his tenure, Peter



Grove City went 7-0-0 in 1956, Bob Thorn's final season as head coach.



Grove City made its first appearance in the NCAA Championship Tournament in 1962.

Buttner became the College's first two-time All-American as he earned First Team All-America in both 1958 and 1959.

Cliff Wettig replaced Leviton as head coach in 1962 and made an immediate -- and immeasurable -- impact on the program. In his first season, Wettig guided Grove City to a 6-4-1 record and the school's first-ever NCAA Tournament appearance.

The next year, John Mulholland earned Honorable Mention All-America at fullback as Grove City went 6-3-0.

The 1964 team set a new program record for wins by going 9-0-0. In 1965, only a 1-1 draw against Pitt



The 1964 team (above) went 9-0-0 while many of the same contributors helped the 1965 Wolverines (below) register an 8-0-1 mark.



kept Grove City from a second straight perfect season as the Wolverines went 8-0-1.

The 1969 squad tied the single-season program record for wins by going 9-2. Fullback Matthew Lux earned Second Team All-America that year.

The Wolverines compiled a 7-3-0 record in 1970, Wettig's final year as head coach. Russ Trimmer then coached Grove City to a 5-3-1 mark in 1971.

Don Lyle became the fifth head coach in program history prior to the start of the 1972 season. After four



# PROGRAM HISTORY

solid seasons, Grove City broke through in 1976 and advanced to the quarterfinals of the NCAA Championship Tournament.

In the process, the Wolverines won a school-record 10 matches and advanced further in an NCAA Tournament than any other Grove City squad.

In 1977, Grove City again broke the single-season win mark by going 11-3-0. The Wolverines closed the



**The Wolverines celebrated the country's bicentennial in 1976 by advancing to the NCAA quarterfinals.**

1970s by going 18-5-1 in 1978-79. That run continued into the next decade as Grove City returned to the NCAA Tournament in 1980.



**The 1980 team made Grove City's third all-time appearance in the NCAA Tournament.**

Following a brief dry spell, Grove City rebounded in the middle of the 1980s. The Wolverines followed up a 9-4-1 mark in 1985 by going 11-2-1 in 1986. Defender Bill Juergens earned Second Team All-America honors following the 1986 season.

Grove City returned to the postseason in 1995 by qualifying for the Eastern College Athletic Conference Championship Tournament (ECAC). The next year, Grove City shattered the single-season win record by going 16-2 and earning a share of the Presidents' Athletic Conference crown.

The Wolverines also captured the program's first ECAC title. Greg Kreutzberg scored a school-record 25 goals.

Following a 10-win season in 2000, the Wolverines then returned to the ECAC Tournament with a 13-6-1 overall record.



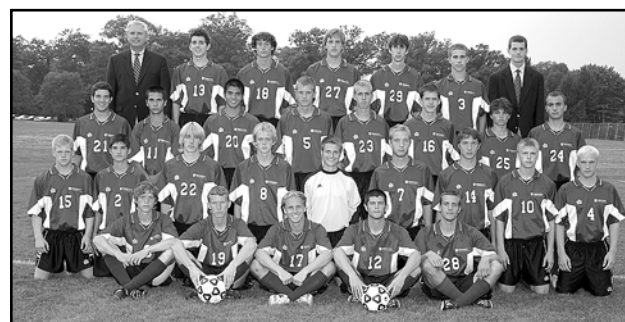
**In 1996, Grove City won 16 matches, the Presidents' Athletic Conference title and the ECAC Tournament.**

The new decade continued to prove bountiful for Grove City. After 23 total wins in 2003 and 2004, the Wolverines won their first-ever outright PAC title in 2005. Grove City also reached the ECAC Tournament finals.

Mike Dreves, who captained the 1995 and 1996 teams, succeeded Lyle as head coach in 2006. He guided Grove City to 11 wins and a berth in the ECAC semifinals in his first season as coach. That year, Bob McNees became Grove City's all-time leader in goals with 63.

In 2010, Grove City posted 15 wins and advanced to the ECAC Tournament finals. Senior Chuck Witt became the program's first First Team CoSIDA Academic All-American following the season.

Tim Boswell and Brian Eckenhoff both earned Academic All-America in 2011 after helping the Wolverines to 12 wins and another ECAC Tournament invitation.



**Grove City won its first outright PAC title in 2005.**

## GROVE CITY COLLEGE MEN'S SOCCER HALL OF FAME

**CLASS OF 2013** -- Tom Fleming '75, Harvey Miller '40 and Matthew Towle '93

**CLASS OF 2012** -- Paul Fletcher '66 and Christos Takoudes '60

**CLASS OF 2011** -- Ross Carnes '70 and Chuck Harrington '73

**CLASS OF 2010** -- Alex Eggers '51 and Dave Howard '81

**CLASS OF 2009** -- Bob Bishop '66 and Glenn Zembower '48

**CLASS OF 2008** -- Phil Donatelli '77 and Greg Kreutzberg '97

**CLASS OF 2007** -- Bill Buchanan '66, Angelo Mariotti '78 and Gary Tissue '80

**CLASS OF 2006** -- Vaughn Irwin '53, Jon Bornholm '78 and Dr. Don Lyle

**CLASS OF 2005** -- Phil Ahlschlager '75 and Jim Pontier '68

**CLASS OF 2004** -- Richard Manley '67 and Travis Young '59

**CLASS OF 2003** -- James Foraker '58 and Scott Johnston '55

**CLASS OF 2002** -- Ross Emerson '57 and Charles Slemmons '53

**CLASS OF 2001** -- Peter Buttner '61, Bill Juergens '87, Matthew Lux '70, John Mulholland '65, Frank Sbrocco '57, Robert Thorn '16 and Cliff Wettig

# ALL-TIME RESULTS

## 1938

**Coach: Bob Thorn**

**Season Record: 1-2-1**

1	Slippery Rock	0
1	Allegheny	1
0	Carnegie Tech	3
1	Slippery Rock	2

## 1939

**Coach: Bob Thorn**

**Season Record: 2-2-0**

0	Slippery Rock	2
3	Allegheny	2
1	Carnegie Tech	0
0	Slippery Rock	2

## 1940

**Coach: Bob Thorn**

**Season Record: 3-3-0**

4	Alliance	0
2	Slippery Rock	5
2	Allegheny	3
1	Oberlin	0
2	Carnegie Tech	0
1	Slippery Rock	2

## 1941

**Coach: Bob Thorn**

**Season Record: 5-2-0**

4	Alliance	0
2	Allegheny	1
0	Oberlin	1
2	Slippery Rock	1
1	Carnegie Tech	0
0	Slippery Rock	2
3	Alliance	0

## 1942

**Coach: Bob Thorn**

**Season Record: 5-1-0**

5	Alliance	0
0	Allegheny	1
3	Carnegie Tech	2
1	Slippery Rock	0
3	Alliance	0
2	Slippery Rock	1

## 1943-44

**No Games During War**

## 1945

**Coach: Bob Thorn**

**Season Record: 2-1-2**

1	Thiel	3
2	Allegheny	2
0	Allegheny	0
3	Thiel	0
4	Carnegie Tech	3

## 1946

**Coach: Bob Thorn**

**Season Record: 4-2-1**

4	Thiel	1
1	Slippery Rock	2
3	Allegheny	1
3	Westminster	0
1	Slippery Rock	1
2	Westminster	0
0	Carnegie Tech	1

## 1947

**Coach: Bob Thorn**

**Season Record: 4-4-1**

0	Westminster	1
4	Edinboro	1
0	Slippery Rock	1
2	Allegheny	1
1	Edinboro	0
3	Thiel	0

0	Slippery Rock	0
0	Westminster	4
0	Carnegie Tech	1

## 1948

**Coach: Bob Thorn**

**Season Record: 5-0-3**

1	Edinboro	0
0	Slippery Rock	0
4	Allegheny	1
0	Westminster	0
3	Edinboro	1
3	Thiel	3
3	Westminster	2
1	Carnegie Tech	0

## 1949

**Coach: Bob Thorn**

**Season Record: 2-4-2**

2	Edinboro	1
1	Westminster	1
0	Allegheny	1
0	Edinboro	2
1	Thiel	2
2	Wheaton	0
1	Westminster	0
1	Carnegie Tech	2

## 1950

**Coach: Bob Thorn**

**Season Record: 6-2-0**

2	Edinboro	1
2	Indiana, Pa.	1
5	Kent State	2
3	Allegheny	0
1	Thiel	2
3	Edinboro	1
1	Westminster	2
2	Carnegie Tech	0

## 1951

**Coach: Bob Thorn**

**Season Record: 2-1-3**

2	Westminster	0
3	Indiana, Pa.	3
2	Frostburg State	2
1	Allegheny	4
3	Indiana	2
1	Westminster	1

## 1952

**Coach: Bob Thorn**

**Season Record: 6-0-0**

3	Kiski	0
3	Allegheny	2
5	Kiski	0
4	Indiana, Pa.	0
2	Allegheny	1
5	Indiana, Pa.	2

## 1953

**Coach: Bob Thorn**

**Season Record: 6-1-1**

3	Kiski	0
5	Pitt	0
6	Indiana, Pa.	1
0	Allegheny	1
4	Kiski	0
5	Indiana, Pa.	1
2	Frostburg	2
2	Allegheny	1

## 1954

**Coach: Bob Thorn**

**Season Record: 7-1-0**

3	Kiski	2
2	Wheaton	1
4	Pitt	2

3	Allegheny	0
3	Case	2
8	Indiana, Pa.	1
0	Frostburg State	4
2	Allegheny	1

## 1955

**Coach: Bob Thorn**

**Season Record: 5-2-1**

6	Kiski	0
6	Indiana, Pa.	2
1	Pitt	3
5	Allegheny	1
10	Indiana, Pa.	0
1	Allegheny	1
5	Case	1
2	Oberlin	5

## 1956

**Coach: Bob Thorn**

**Season Record: 7-0-0**

6	Western Reserve	0
3	Fenn	2
3	Pitt	1
2	Allegheny	0
7	Case	0
6	Allegheny	1
3	Oberlin	2

## 1957

**Coach: Dan Leviton**

**Season Record: 6-2-0**

10	Western Reserve	0
1	Slippery Rock	3
0	Pitt	0
5	Allegheny	0
4	Case	1
3	Allegheny	0
2	Oberlin	1
3	Fenn	2

## 1958

**Coach: Dan Leviton**

**Season Record: 5-3-0**

3	Case	2
2	Slippery Rock	3
1	Pittsburgh	0
5	Allegheny	2
1	Slippery Rock	6
2	Oberlin	1
3	Frostburg State	2
2	Fenn	3

## 1959

**Coach: Dan Leviton**

**Season Record: 4-4-1**

5	Case	0
3	Oberlin	2
2	Pitt	1
2	Akron	3
3	Frostburg State	3
3	Allegheny	1
0	Slippery Rock	1
0	Slippery Rock	3
0	Fenn	0

## 1960

**Coach: Dan Leviton**

**Season Record: 1-5-2**

3	Slippery Rock	3
2	Fenn	3
0	Oberlin	4
3	Slippery Rock	3
1	Frostburg State	2
1	Allegheny	0
0	Pitt	7
1	Akron	7

## 1961

**Coach: Dan Leviton**

**Season Record: 2-5-0**

0	Slippery Rock	4
2	Fenn	3
1	Slippery Rock	3
2	Frostburg State	3
2	Allegheny	0
0	Pittsburgh	1
7	St. Francis	0

## 1962

**Coach: Cliff Wettig**

**Season Record: 6-4-1**

0	Fenn	3
2	Slippery Rock	1
5	St. Francis	2
0	Slippery Rock	0
4	St. Bonaventure	0
1	Frostburg State	3
2	Pittsburgh	5
3	Allegheny	1
4	Western Reserve	0
0	Elizabethtown	2
3	Lynchburg	0

## 1963

**Coach: Cliff Wettig**

**Season Record: 6-3-0**

2	Slippery Rock	0
1	Slippery Rock	3
4	Fenn	0
2	St. Bonaventure	1
1	Frostburg	0
3	Western Reserve	1
0	Pitt	2
1	Allegheny	2
5	St. Francis	2

## 1964

**Coach: Cliff Wettig**

**Season Record: 9-0-0**

5	Slippery Rock	2
5	St. Francis	0
5	Mount Union	1
2	Frostburg State	0
5	Slippery Rock	0
6	Pitt	3
3	Allegheny	0
6	St. Bonaventure	1
12	Western Reserve	0

## 1965

**Coach: Dan Leviton**

**Season Record: 8-0-1**

7	Slippery Rock	2
1	Pitt	1
8	Mount Union	1
8	Alliance	0
7	Frostburg State	0
2	Slippery Rock	0
3	St. Bonaventure	2
3	Allegheny	1
15	St. Francis	0

## 1966

**Coach: Cliff Wettig**

**Season Record: 7-1-1**

0	Slippery Rock	2
5	Lock Haven	2
7	Saint Vincent	1
15	Saint Vincent	1
1	Frostburg State	1
4	Pitt	1
7	Allegheny	0
4	St. Francis	1
4	Alliance	1



# ALL-TIME RESULTS

<b>1967</b>	
<b>Coach: Cliff Wettig</b>	
<b>Season Record: 6-4-0</b>	
3 Slippy Rock _____	1
3 Lock Haven _____	2
8 St. Francis _____	0
1 Frostburg State _____	4
1 Saint Vincent _____	3
3 Pitt _____	0
2 Allegheny _____	0
2 Elizabethtown _____	4
5 Alliance _____	2
0 Buffalo State _____	3
<b>1968</b>	
<b>Coach: Cliff Wettig</b>	
<b>Season Record: 7-3-1</b>	
4 Slippy Rock _____	2
1 Wooster _____	5
3 St. Francis _____	0
5 Saint Vincent _____	0
3 Frostburg State _____	3
5 Carnegie Mellon _____	1
2 Pitt _____	1
3 Buffalo State _____	6
4 Allegheny _____	2
1 Elizabethtown _____	5
3 Alliance _____	2
<b>1969</b>	
<b>Coach: Cliff Wettig</b>	
<b>Season Record: 9-2-0</b>	
2 Alliance _____	1
3 Wooster _____	1
11 Saint Vincent _____	0
7 Slippy Rock _____	3
2 Frostburg State _____	0
6 St. Francis _____	0
0 Pitt _____	3
3 Gannon _____	0
0 Buffalo State _____	1
3 Carnegie Mellon _____	1
1 Allegheny _____	0
<b>1970</b>	
<b>Coach: Cliff Wettig</b>	
<b>Season Record: 7-3-0</b>	
7 Cedarville _____	0
1 Buffalo State _____	3
1 Slippy Rock _____	0
7 Allegheny _____	0
1 Frostburg State _____	2
4 St. Francis _____	1
1 Pitt _____	3
5 Gannon _____	0
4 Carnegie Mellon _____	0
3 Alliance _____	1
<b>1971</b>	
<b>Coach: Russ Trimmer</b>	
<b>Season Record: 5-3-1</b>	
0 Indiana, Pa. _____	1
5 Slippy Rock _____	1
0 Frostburg State _____	4
1 Allegheny _____	1
4 Gannon _____	1
2 Pitt _____	4
5 Alliance _____	2
5 St. Francis _____	1
4 Carnegie Mellon _____	0
<b>1972</b>	
<b>Coach: Don Lyle</b>	
<b>Season Record: 4-4-1</b>	
3 Indiana, Pa. _____	0
6 Slippy Rock _____	0

0 Frostburg State _____	1
5 Allegheny _____	2
0 Gannon _____	1
1 Pitt _____	5
0 Alliance _____	1
3 Edinboro _____	2
3 St. Francis _____	3
<b>1973</b>	
<b>Coach: Don Lyle</b>	
<b>Season Record: 5-5-2</b>	
0 Indiana, Pa. _____	0
1 Gannon _____	3
3 Point Park _____	4
4 Slippy Rock _____	5
4 Allegheny _____	2
4 Frostburg State _____	3
2 Lock Haven _____	4
3 Alliance _____	0
1 Edinboro _____	1
2 St. Francis _____	0
1 Pitt _____	3
2 PSU Behrend _____	1
<b>1974</b>	
<b>Coach: Don Lyle</b>	
<b>Season Record: 6-4-2</b>	
1 Gannon _____	4
6 Point Park _____	2
1 Slippy Rock _____	1
5 Wash. & Jeff. _____	1
0 Frostburg State _____	3
1 Allegheny _____	0
2 Lock Haven _____	2
2 Indiana, Pa. _____	2
2 Alliance _____	1
5 Edinboro _____	2
2 Pitt _____	3
1 Penn State Behrend _____	0
<b>1975</b>	
<b>Coach: Don Lyle</b>	
<b>Season Record: 7-5-1</b>	
2 Gannon _____	1
1 Slippy Rock _____	3
9 Wash. & Jeff. _____	0
1 Mount Union _____	5
7 Frostburg State _____	1
4 Geneva _____	0
1 Indiana, Pa. _____	1
2 Alliance _____	0
3 Edinboro _____	1
0 Pitt-Johnstown _____	2
0 Pitt _____	2
2 Penn State Behrend _____	3
1 Allegheny _____	0
<b>1976</b>	
<b>Coach: Don Lyle</b>	
<b>Season Record: 10-3-1</b>	
5 Mercyhurst _____	0
2 Slippy Rock _____	1
2 Allegheny _____	2
9 Saint Vincent _____	0
2 Gannon _____	1
3 Geneva _____	0
1 Indiana, Pa. _____	2
3 Alliance _____	0
0 Edinboro _____	1
6 Pitt-Johnstown _____	0
3 Pitt _____	0
3 Penn State Behrend _____	1
2 Lynchburg _____	0
1 Elizabethtown _____	3
<b>1977</b>	

<b>Coach: Don Lyle</b>	
<b>Season Record: 11-3-0</b>	
1 Slippy Rock _____	2
2 Allegheny _____	1
12 Saint Vincent _____	2
6 Gannon _____	0
4 Geneva _____	0
2 Mount Union _____	1
5 Alliance _____	0
1 Indiana, Pa. _____	2
7 Pitt-Johnstown _____	0
0 Pitt _____	1
4 Penn State Behrend _____	1
3 Edinboro _____	1
2 Bethany _____	1
4 Mercyhurst _____	0
<b>1978</b>	
<b>Coach: Don Lyle</b>	
<b>Season Record: 8-3-1</b>	
0 Slippy Rock _____	2
1 Allegheny _____	3
2 Gannon _____	1
5 Geneva _____	0
3 Mount Union _____	1
8 Alliance _____	0
4 Indiana, Pa. _____	2
7 Pitt-Johnstown _____	0
3 Pitt _____	1
1 Penn State Behrend _____	1
0 Bethany _____	2
3 Carnegie Mellon _____	1
<b>1979</b>	
<b>Coach: Don Lyle</b>	
<b>Season Record: 10-2-0</b>	
1 Pitt _____	0
3 Slippy Rock _____	1
7 Gannon _____	0
5 Allegheny _____	2
6 Geneva _____	0
3 Mercyhurst _____	2
7 Alliance _____	0
0 Indiana, Pa. _____	2
7 Mount Union _____	1
1 Penn State Behrend _____	0
2 Bethany _____	6
3 Carnegie Mellon _____	0
<b>1980</b>	
<b>Coach: Don Lyle</b>	
<b>Season Record: 9-5-0</b>	
3 Gannon _____	1
2 Slippy Rock _____	1
2 Allegheny _____	0
1 Fredonia State _____	3
1 Geneva _____	0
0 Pitt _____	2
2 Indiana, Pa. _____	3
7 Mercyhurst _____	2
5 Mount Union _____	0
5 Penn State Behrend _____	2
10 Alliance _____	2
2 Bethany _____	5
<b>1981</b>	
<b>Coach: Don Lyle</b>	
<b>Season Record: 6-7-0</b>	
5 Gannon _____	0
0 Pitt _____	3
2 Slippy Rock _____	4
6 Allegheny _____	1
1 Fredonia State _____	2
2 Geneva _____	1
3 Indiana, Pa. _____	5
1 Mercyhurst _____	2

8 Alliance _____	0
0 Penn State Behrend _____	1
1 Saint Vincent _____	3
4 Bethany _____	3
3 Carnegie Mellon _____	0
<b>1982</b>	
<b>Coach: Don Lyle</b>	
<b>Season Record: 6-7-1</b>	
4 Gannon _____	2
0 Pitt _____	3
0 Slippy Rock _____	2
3 Allegheny _____	2
2 Fredonia State _____	3
3 Geneva _____	1
0 Carnegie Mellon _____	1
2 Indiana, Pa. _____	4
2 Mercyhurst _____	2
8 Alliance _____	0
2 Penn State Behrend _____	1
1 Saint Vincent _____	5
2 Bethany _____	6
1 Edinboro _____	0
<b>1983</b>	
<b>Coach: Don Lyle</b>	
<b>Season Record: 3-8-3</b>	
1 Gannon _____	2
0 Pitt _____	1
1 Slippy Rock _____	1
1 Allegheny _____	2
0 Fredonia State _____	3
0 Geneva _____	2
1 Carnegie Mellon _____	5
1 Indiana, Pa. _____	1
1 Mercyhurst _____	2
8 Alliance _____	0
0 Penn State Behrend _____	0
4 Saint Vincent _____	0
0 Bethany _____	3
1 Edinboro _____	0
<b>1984</b>	
<b>Coach: Don Lyle</b>	
<b>Season Record: 7-7-0</b>	
1 Edinboro _____	0
0 Allegheny _____	1
1 Hiram _____	0
3 Slippy Rock _____	2
0 Gannon _____	3
3 Bethany _____	4
2 Mercyhurst _____	1
0 Carnegie Mellon _____	3
1 John Carroll _____	2
3 Youngstown State _____	0
1 Pitt _____	2
3 Alliance _____	1
6 Wash. & Jeff. _____	1
0 Penn State Behrend _____	2
<b>1985</b>	
<b>Coach: Don Lyle</b>	
<b>Season Record: 9-4-1</b>	
2 Pitt-Bradford _____	1
2 Edinboro _____	2
2 Allegheny _____	0
1 Hiram _____	0
2 Slippy Rock _____	1
2 Gannon _____	5
0 Bethany _____	8
0 Mercyhurst _____	2
1 Carnegie Mellon _____	4
3 John Carroll _____	2
9 Youngstown State _____	2
2 Penn State Behrend _____	0
6 Alliance _____	0

ALL-TIME RESULTS



# ALL-TIME RESULTS

7 Wash. & Jeff. \_\_\_\_\_ 0  
**1986**

**Coach: Don Lyle**  
**Season Record: 5-5-2**

5 Pitt-Bradford \_\_\_\_\_ 1  
 4 Edinboro \_\_\_\_\_ 1  
 4 Allegheny \_\_\_\_\_ 1  
 1 Hiram \_\_\_\_\_ 1  
 2 Slippery Rock \_\_\_\_\_ 1  
 5 Westminister \_\_\_\_\_ 0  
 0 Bethany \_\_\_\_\_ 4  
 1 Carnegie Mellon \_\_\_\_\_ 0  
 4 John Carroll \_\_\_\_\_ 0  
 2 Youngstown State \_\_\_\_\_ 0  
 2 Penn State Behrend \_\_\_\_\_ 1  
 2 Mercyhurst \_\_\_\_\_ 1  
 1 Gannon \_\_\_\_\_ 5  
 1 Wash. & Jeff. \_\_\_\_\_ 0

**1987**  
**Coach: Don Lyle**  
**Season Record: 6-5-2**

4 Pitt-Bradford \_\_\_\_\_ 0  
 0 Allegheny \_\_\_\_\_ 1  
 2 Hiram \_\_\_\_\_ 2  
 0 Slippery Rock \_\_\_\_\_ 0  
 2 California, Pa. \_\_\_\_\_ 1  
 4 Westminister \_\_\_\_\_ 0  
 1 Bethany \_\_\_\_\_ 5  
 3 Geneva \_\_\_\_\_ 0  
 0 Carnegie Mellon \_\_\_\_\_ 2  
 0 John Carroll \_\_\_\_\_ 2  
 6 Penn State Behrend \_\_\_\_\_ 1  
 0 Mercyhurst \_\_\_\_\_ 3  
 4 Wash. & Jeff. \_\_\_\_\_ 0

**1988**  
**Coach: Don Lyle**  
**Season Record: 5-7-1**

2 Pitt-Bradford \_\_\_\_\_ 0  
 2 Niagara \_\_\_\_\_ 3  
 1 Allegheny \_\_\_\_\_ 0  
 0 Hiram \_\_\_\_\_ 0  
 0 Slippery Rock \_\_\_\_\_ 2  
 0 California, Pa. \_\_\_\_\_ 1  
 1 Westminister \_\_\_\_\_ 0  
 0 Bethany \_\_\_\_\_ 2  
 0 Geneva \_\_\_\_\_ 1  
 1 Carnegie Mellon \_\_\_\_\_ 4  
 1 John Carroll \_\_\_\_\_ 2  
 2 Penn State Behrend \_\_\_\_\_ 1  
 5 Wash. & Jeff. \_\_\_\_\_ 4

**1989**  
**Coach: Don Lyle**  
**Season Record: 6-6-1**

1 Allegheny \_\_\_\_\_ 5  
 1 Hiram \_\_\_\_\_ 3  
 2 Slippery Rock \_\_\_\_\_ 4  
 2 California, Pa. \_\_\_\_\_ 1  
 3 Westminister \_\_\_\_\_ 4  
 0 Bethany \_\_\_\_\_ 3  
 4 Geneva \_\_\_\_\_ 0  
 2 Carnegie Mellon \_\_\_\_\_ 3  
 5 Wash. & Jeff. \_\_\_\_\_ 0  
 1 Penn State Behrend \_\_\_\_\_ 0  
 1 Pitt-Johnstown \_\_\_\_\_ 0  
 1 Pitt \_\_\_\_\_ 1  
 5 Pitt-Bradford \_\_\_\_\_ 1

**1990**  
**Coach: Don Lyle**  
**Season Record: 7-6-1**

3 Baldwin-Wallace \_\_\_\_\_ 1  
 0 Allegheny \_\_\_\_\_ 1  
 0 Hiram \_\_\_\_\_ 4

2 Slippery Rock \_\_\_\_\_ 0  
 5 Westminister \_\_\_\_\_ 0  
 0 Bethany \_\_\_\_\_ 2  
 1 Geneva \_\_\_\_\_ 2  
 2 Pitt-Bradford \_\_\_\_\_ 1  
 4 Wash. & Jeff. \_\_\_\_\_ 0  
 2 Penn State Behrend \_\_\_\_\_ 1  
 0 Carnegie Mellon \_\_\_\_\_ 0  
 0 Pitt-Johnstown \_\_\_\_\_ 1  
 0 Pitt \_\_\_\_\_ 1  
 2 Saint Vincent \_\_\_\_\_ 0

**1991**  
**Coach: Don Lyle**  
**Season Record: 8-6-0**

1 Baldwin-Wallace \_\_\_\_\_ 0  
 3 Allegheny \_\_\_\_\_ 2  
 0 Hiram \_\_\_\_\_ 1  
 2 Slippery Rock \_\_\_\_\_ 4  
 4 Westminister \_\_\_\_\_ 3  
 1 Wash. & Jeff. \_\_\_\_\_ 0  
 1 Geneva \_\_\_\_\_ 2  
 4 Pitt-Bradford \_\_\_\_\_ 0  
 0 Bethany \_\_\_\_\_ 1  
 1 Waynesburg \_\_\_\_\_ 0  
 4 Penn State Behrend \_\_\_\_\_ 0  
 0 Carnegie Mellon \_\_\_\_\_ 3  
 2 Pitt-Johnstown \_\_\_\_\_ 0  
 0 Pitt \_\_\_\_\_ 3

**1992**  
**Coach: Don Lyle**  
**Season Record: 7-7-1**

8 Hilbert \_\_\_\_\_ 0  
 0 Allegheny \_\_\_\_\_ 1  
 2 California, Pa. \_\_\_\_\_ 1  
 1 Slippery Rock \_\_\_\_\_ 2  
 1 Westminister \_\_\_\_\_ 2  
 2 Wash. & Jeff. \_\_\_\_\_ 1  
 0 Geneva \_\_\_\_\_ 2  
 4 Pitt-Bradford \_\_\_\_\_ 0  
 1 Bethany \_\_\_\_\_ 4  
 4 Waynesburg \_\_\_\_\_ 0  
 4 Penn State Behrend \_\_\_\_\_ 0  
 0 Carnegie Mellon \_\_\_\_\_ 0  
 0 Pitt-Johnstown \_\_\_\_\_ 2  
 0 Pitt \_\_\_\_\_ 4  
 0 Saint Vincent \_\_\_\_\_ 1

**1993**  
**Coach: Don Lyle**  
**Season Record: 3-11-1**

3 Hilbert \_\_\_\_\_ 0  
 0 Allegheny \_\_\_\_\_ 1  
 0 California, Pa. \_\_\_\_\_ 4  
 1 Slippery Rock \_\_\_\_\_ 3  
 1 Wash. & Jeff. \_\_\_\_\_ 2  
 2 Westminister \_\_\_\_\_ 6  
 0 Geneva \_\_\_\_\_ 5  
 7 Pitt-Bradford \_\_\_\_\_ 0  
 1 Bethany \_\_\_\_\_ 6  
 2 Penn State Behrend \_\_\_\_\_ 3  
 1 Waynesburg \_\_\_\_\_ 0  
 0 Carnegie Mellon \_\_\_\_\_ 5  
 0 Pitt-Johnstown \_\_\_\_\_ 0  
 1 Pitt \_\_\_\_\_ 7  
 0 Saint Vincent \_\_\_\_\_ 2

**1994**  
**Coach: Don Lyle**  
**Season Record: 4-9-0**

2 Allegheny \_\_\_\_\_ 3  
 0 California, Pa. \_\_\_\_\_ 2  
 1 Slippery Rock \_\_\_\_\_ 3  
 2 Wash. & Jeff. \_\_\_\_\_ 3  
 0 Westminister \_\_\_\_\_ 1

3 Geneva \_\_\_\_\_ 5  
 7 Pitt-Bradford \_\_\_\_\_ 2  
 1 Bethany \_\_\_\_\_ 2  
 3 Pitt-Johnstown \_\_\_\_\_ 0  
 3 Penn State Behrend \_\_\_\_\_ 4  
 4 Waynesburg \_\_\_\_\_ 0  
 1 Carnegie Mellon \_\_\_\_\_ 2  
 4 La Roche \_\_\_\_\_ 0

**1995**  
**Coach: Don Lyle**  
**Season Record: 10-6-0**

7 Lake Erie \_\_\_\_\_ 0  
 1 Allegheny \_\_\_\_\_ 2  
 3 Marietta \_\_\_\_\_ 2  
 2 Slippery Rock \_\_\_\_\_ 0  
 0 Wash. & Jeff. \_\_\_\_\_ 2  
 0 Westminister \_\_\_\_\_ 3  
 3 Mount Union \_\_\_\_\_ 0  
 5 Pitt-Bradford \_\_\_\_\_ 0  
 0 Carnegie Mellon \_\_\_\_\_ 3  
 5 Pitt-Johnstown \_\_\_\_\_ 1  
 2 Penn State Behrend \_\_\_\_\_ 1  
 4 Muskingum \_\_\_\_\_ 0  
 8 Waynesburg \_\_\_\_\_ 0  
 0 Bethany \_\_\_\_\_ 2  
 4 La Roche \_\_\_\_\_ 0  
 1 Johns Hopkins \_\_\_\_\_ 2

**1996**  
**Coach: Don Lyle**  
**Season Record: 16-2-0**

4 Point Park \_\_\_\_\_ 1  
 2 Allegheny \_\_\_\_\_ 1  
 2 Slippery Rock \_\_\_\_\_ 1  
 7 Westminister \_\_\_\_\_ 0  
 3 Muskingum \_\_\_\_\_ 2  
 9 Waynesburg \_\_\_\_\_ 0  
 8 Pitt-Bradford \_\_\_\_\_ 1  
 0 Carnegie Mellon \_\_\_\_\_ 1  
 4 Penn State Behrend \_\_\_\_\_ 0  
 0 Alfred \_\_\_\_\_ 1  
 4 La Roche \_\_\_\_\_ 0  
 2 Wash. & Jeff. \_\_\_\_\_ 1  
 1 Mount Union \_\_\_\_\_ 0  
 4 Bethany \_\_\_\_\_ 3  
 4 Lake Erie \_\_\_\_\_ 0  
 3 Susquehanna \_\_\_\_\_ 2  
 5 Scranton \_\_\_\_\_ 0  
 3 Frostburg State \_\_\_\_\_ 1

**1997**  
**Coach: Don Lyle**  
**Season Record: 6-8-1**

1 Allegheny \_\_\_\_\_ 3  
 1 Slippery Rock \_\_\_\_\_ 2  
 1 Westminister \_\_\_\_\_ 3  
 2 Waynesburg \_\_\_\_\_ 0  
 1 Mount Union \_\_\_\_\_ 2  
 1 Bethany \_\_\_\_\_ 5  
 4 Pitt-Bradford \_\_\_\_\_ 0  
 0 Carnegie Mellon \_\_\_\_\_ 2  
 0 Penn State Behrend \_\_\_\_\_ 1  
 3 La Roche \_\_\_\_\_ 2  
 3 Alfred \_\_\_\_\_ 0  
 3 Point Park \_\_\_\_\_ 2  
 2 Wash. & Jeff. \_\_\_\_\_ 1  
 1 Frostburg State \_\_\_\_\_ 2  
 0 Susquehanna \_\_\_\_\_ 0

**1998**  
**Coach: Don Lyle**  
**Season Record: 12-7-0**

1 Allegheny \_\_\_\_\_ 3  
 0 Point Park \_\_\_\_\_ 2  
 2 Pitt-Greensburg \_\_\_\_\_ 1

1 Muskingum \_\_\_\_\_ 3  
 2 Waynesburg \_\_\_\_\_ 1  
 2 Mount Union \_\_\_\_\_ 1  
 6 Thiel \_\_\_\_\_ 0  
 0 Bethany \_\_\_\_\_ 3  
 3 Pitt-Bradford \_\_\_\_\_ 1  
 0 Carnegie Mellon \_\_\_\_\_ 2  
 5 Thiel \_\_\_\_\_ 0  
 1 Penn State Behrend \_\_\_\_\_ 2  
 1 Westminister \_\_\_\_\_ 0  
 2 La Roche \_\_\_\_\_ 1  
 1 Alfred \_\_\_\_\_ 0  
 2 Lake Erie \_\_\_\_\_ 1  
 3 Wash. & Jeff. \_\_\_\_\_ 1  
 0 Slippery Rock \_\_\_\_\_ 1  
 1 Frostburg State \_\_\_\_\_ 0

**1999**  
**Coach: Don Lyle**  
**Season Record: 11-7-2**

1 Allegheny \_\_\_\_\_ 3  
 0 Cabrini \_\_\_\_\_ 1  
 2 Ursinus \_\_\_\_\_ 1  
 1 Pitt-Greensburg \_\_\_\_\_ 0  
 1 Muskingum \_\_\_\_\_ 0  
 2 Waynesburg \_\_\_\_\_ 1  
 0 Mount Union \_\_\_\_\_ 0  
 2 Bethany \_\_\_\_\_ 4  
 0 Carnegie Mellon \_\_\_\_\_ 1  
 1 Thiel \_\_\_\_\_ 0  
 1 Penn State Behrend \_\_\_\_\_ 3  
 2 Westminister \_\_\_\_\_ 1  
 1 La Roche \_\_\_\_\_ 0  
 2 Pitt-Bradford \_\_\_\_\_ 1  
 5 Lake Erie \_\_\_\_\_ 0  
 0 Wash. & Jeff. \_\_\_\_\_ 1  
 2 Slippery Rock \_\_\_\_\_ 2  
 1 Frostburg State \_\_\_\_\_ 0  
 2 Wash. & Jeff. \_\_\_\_\_ 1  
 2 Bethany \_\_\_\_\_ 6

**2000**  
**Coach: Don Lyle**  
**Season Record: 10-9-1**

1 Keene State \_\_\_\_\_ 3  
 1 Kenyon \_\_\_\_\_ 0  
 2 Messiah \_\_\_\_\_ 0  
 1 Waynesburg \_\_\_\_\_ 2  
 1 Mount Union \_\_\_\_\_ 2  
 0 Bethany \_\_\_\_\_ 2  
 3 Muskingum \_\_\_\_\_ 1  
 1 Slippery Rock \_\_\_\_\_ 2  
 4 Thiel \_\_\_\_\_ 0  
 0 Penn State Behrend \_\_\_\_\_ 3  
 5 La Roche \_\_\_\_\_ 1  
 1 Westminister \_\_\_\_\_ 0  
 1 Pitt-Greensburg \_\_\_\_\_ 0  
 4 Pitt-Bradford \_\_\_\_\_ 0  
 1 Wash. & Jeff. \_\_\_\_\_ 1  
 0 Carnegie Mellon \_\_\_\_\_ 1  
 1 Frostburg State \_\_\_\_\_ 2  
 3 Lake Erie \_\_\_\_\_ 0  
 6 Thiel \_\_\_\_\_ 0  
 0 Bethany \_\_\_\_\_ 3

**2001**  
**Coach: Don Lyle**  
**Season Record: 13-7-1**

1 Pitt-Greensburg \_\_\_\_\_ 0  
 2 Waynesburg \_\_\_\_\_ 0  
 0 Messiah \_\_\_\_\_ 2  
 1 Waynesburg \_\_\_\_\_ 0  
 2 Mount Union \_\_\_\_\_ 0  
 1 Bethany \_\_\_\_\_ 0  
 3 Wash. & Jeff. \_\_\_\_\_ 1

ALL-TIME RESULTS



# ALL-TIME RESULTS

0 Westminster _____ 2	2 Thiel _____ 1	2 Franciscan _____ 1	1 Saint Vincent _____ 0
4 Thiel _____ 0	2 Geneva _____ 1	1 Bethany _____ 1	0 Fredonia State _____ 3
1 Penn State Altoona _____ 0	2 Westminster _____ 0	3 Waynesburg _____ 0	2 Thomas More _____ 2
2 Penn State Behrend _____ 1	1 Waynesburg _____ 0	1 Saint Vincent _____ 1	1 Bethany _____ 2
1 Bethany _____ 2	2 La Roche _____ 0	0 Thomas More _____ 1	3 Wash. & Jeff. _____ 1
1 Westminster _____ 2	0 Wash. & Jeff. _____ 0	0 Wash. & Jeff. _____ 4	1 Misericordia _____ 0
1 Pitt-Bradford _____ 0	2 Carnegie Mellon _____ 3	1 Westminster _____ 3	1 Stevenson _____ 3
2 Wash. & Jeff. _____ 1	2 Thiel _____ 0	2 Geneva _____ 0	
1 Carnegie Mellon _____ 3	3 Waynesburg _____ 2	4 Thiel _____ 2	
2 Frostburg State _____ 2	4 Wash. & Jeff. _____ 0		
1 Thiel _____ 0	1 Wash. & Jeff. _____ 2		
1 Bethany _____ 4			
0 Moravian _____ 1			
	<b>2005</b>		<b>2011</b>
	<b>Coach: Don Lyle</b>		<b>Coach: Mike Dreves</b>
	<b>Season Record: 13-6-5</b>		<b>Season Record: 12-6-1</b>
0 Geneva _____ 2	1 Point Park _____ 2	0 Point Park _____ 1	1 Adrian _____ 2
6 Lake Erie _____ 1	2 Mount St. Joseph _____ 1	1 Mount Saint Joseph _____ 1	1 Muskingum _____ 0
0 Pitt-Greensburg _____ 3	0 Bethany _____ 0	2 Capital _____ 6	2 Allegheny _____ 5
0 Bethany _____ 1	3 Thomas More _____ 0	0 Ohio Wesleyan _____ 3	4 Hilbert _____ 1
0 Waynesburg _____ 0	1 Pitt-Bradford _____ 0	1 Franciscan _____ 2	3 PSU Behrend _____ 2
2 Mount Union _____ 6	3 Waynesburg _____ 1	0 Baldwin-Wallace _____ 4	0 Baldwin-Wallace _____ 3
0 Bethany _____ 1	0 Penn State Behrend _____ 2	2 Penn State Behrend _____ 1	1 Mount Union _____ 0
0 Messiah _____ 4	1 Penn State Behrend _____ 2	0 Penn State Altoona _____ 0	0 Baldwin-Wallace _____ 3
0 Westminster _____ 2	0 Westminster _____ 3	0 Carnegie Mellon _____ 5	6 Waynesburg _____ 0
1 Thiel _____ 0	5 Thiel _____ 1	1 Case Western _____ 4	1 Thiel _____ 0
1 Penn State Behrend _____ 1	1 Geneva _____ 1	3 Thiel _____ 0	4 Wash. & Jeff. _____ 1
1 Westminster _____ 2	3 Westminster _____ 0	2 Bethany _____ 0	1 Carnegie Mellon _____ 0
1 Waynesburg _____ 2	1 Thomas More _____ 0	3 Waynesburg _____ 0	1 Geneva _____ 1
1 Pitt-Bradford _____ 0	0 La Roche _____ 0	3 Saint Vincent _____ 2	2 Saint Vincent _____ 1
0 Wash. & Jeff. _____ 3	2 Wash. & Jeff. _____ 0	0 Thomas More _____ 1	3 Westminster _____ 2
0 Carnegie Mellon _____ 2	0 Carnegie Mellon _____ 2	0 Messiah _____ 5	0 Geneva _____ 1
3 Thiel _____ 2	0 Bethany _____ 0	0 Wash. & Jeff. _____ 0	0 Medaille _____ 1
1 Wash. & Jeff. _____ 4	0 Thiel _____ 0	0 Westminister _____ 1	
1 Thiel _____ 0	1 Waynesburg _____ 0	4 Geneva _____ 1	
1 Westminster _____ 2	0 Wash. & Jeff. _____ 2	2 Westminister _____ 3	
	0 Wash. & Jeff. _____ 0		
	2 Wash. & Jeff. _____ 1		
	2 Lake Erie _____ 1		
	1 McDaniel _____ 1		
	0 Johns Hopkins _____ 3		
	<b>2006</b>		<b>2012</b>
	<b>Coach: Mike Dreves</b>		<b>Coach: Mike Dreves</b>
	<b>Season Record: 11-7-2</b>		<b>Season Record: 8-9-2</b>
3 Geneva _____ 3	0 Medaille _____ 4	2 Point Park _____ 0	1 Susquehanna _____ 2
4 Pitt-Bradford _____ 1	3 Pitt-Bradford _____ 0	0 Cedarville _____ 2	0 Lebanon Valley _____ 2
1 Pitt-Greensburg _____ 2	1 La Roche _____ 0	0 Penn State Altoona _____ 0	0 Allegheny _____ 1
2 Waynesburg _____ 1	2 Waynesburg _____ 0	2 Hilbert _____ 0	1 Adrian _____ 0
0 Mount Union _____ 2	0 Carnegie Mellon _____ 2	0 Penn State Behrend _____ 1	6 Hilbert _____ 2
6 Bethany _____ 1	2 Geneva _____ 0	1 Baldwin-Wallace _____ 4	0 PSU Behrend _____ 3
2 Bethany _____ 1	0 Penn State Behrend _____ 2	0 Heidelberg _____ 4	1 Baldwin-Wallace _____ 2
1 Westminster _____ 0	2 Thomas More _____ 1	0 Carnegie Mellon _____ 5	1 Point Park _____ 0
1 Thiel _____ 0	0 Wash. & Jeff. _____ 0	1 Juniata _____ 0	1 Heidelberg _____ 2
2 Penn State Behrend _____ 1	4 Waynesburg _____ 0	0 Wash. & Jeff. _____ 1	4 Bethany _____ 0
0 Messiah _____ 4	0 Westminister _____ 4	3 Thiel _____ 0	0 Thomas More _____ 1
0 Westminster _____ 0	0 Bethany _____ 1	0 Geneva _____ 3	2 Waynesburg _____ 0
1 Lake Erie _____ 0	2 Thomas More _____ 1	2 Bethany _____ 0	3 Thiel _____ 0
0 Penn State Altoona _____ 2	0 Wash. & Jeff. _____ 1	1 Waynesburg _____ 1	0 Wash. & Jeff. _____ 2
0 Wash. & Jeff. _____ 2	4 Waynesburg _____ 0	3 Saint Vincent _____ 2	2 Carnegie Mellon _____ 3
0 Carnegie Mellon _____ 1	0 Westminister _____ 4	0 Thomas More _____ 1	0 Geneva _____ 0
3 Thiel _____ 0	0 Bethany _____ 1	2 Fredonia State _____ 1	5 Saint Vincent _____ 1
0 Waynesburg _____ 0	4 Saint Vincent _____ 1	0 Westminister _____ 3	1 Westminister _____ 0
2 La Roche _____ 1	2 Wash. & Jeff. _____ 0	0 Thomas More _____ 3	0 Geneva _____ 0
1 Wash. & Jeff. _____ 2	6 Thiel _____ 0		
2 Westminster _____ 1	2 Lake Erie _____ 1		
0 Wash. & Jeff. _____ 2	4 Thomas More _____ 0		
	0 Westminister _____ 3		
	1 Swarthmore _____ 1		
	0 Gettysburg _____ 2		
	<b>2007</b>		<b>2013</b>
	<b>Coach: Mike Dreves</b>		<b>Coach: Mike Dreves</b>
	<b>Season Record: 6-8-4</b>		<b>Season Record: 8-5-6</b>
7 Pitt-Bradford _____ 0	0 Penn State Altoona _____ 1	0 Frostburg State _____ 1	0 Buffalo State _____ 0
0 Johns Hopkins _____ 1	0 La Roche _____ 0	0 Allegheny _____ 1	0 Allegheny _____ 1
1 Shenandoah _____ 0	3 Goucher _____ 2	6 Hilbert _____ 1	6 Hilbert _____ 1
2 Pitt-Greensburg _____ 3	0 Messiah _____ 5	0 Penn State Behrend _____ 2	0 Penn State Behrend _____ 2
3 Lake Erie _____ 0	5 Pitt-Bradford _____ 0	1 Baldwin-Wallace _____ 0	1 Baldwin-Wallace _____ 0
3 Bethany _____ 0	2 Lake Erie _____ 3	3 Muskingum _____ 2	3 Muskingum _____ 2
0 Penn State Behrend _____ 1	1 Penn State Behrend _____ 1	1 Penn State Behrend _____ 1	1 Heidelberg _____ 2
0 Westminister _____ 2	0 Baldwin-Wallace _____ 2	2 Mount Union _____ 1	1 Carnegie Mellon _____ 1
0 Bethany _____ 3	1 Carnegie Mellon _____ 2	1 Carnegie Mellon _____ 2	0 Waynesburg _____ 1
		2 Thiel _____ 0	2 Thiel _____ 0
		0 Bethlehem _____ 0	4 Bethlehem _____ 0
		8 PSU-N. Kensington _____ 1	2 Geneva _____ 1
		1 Wash. & Jeff. _____ 2	0 Wash. & Jeff. _____ 0
		4 Westminister _____ 1	2 Point Park _____ 1
		1 Geneva _____ 0	1 Westminister _____ 1
		4 Thiel _____ 0	3 Saint Vincent _____ 0
		4 Bethany _____ 0	1 Thomas More _____ 1
		4 Waynesburg _____ 0	0 Wash. & Jeff. _____ 0

ALL-TIME RESULTS



# ATHLETIC HALL OF FAME

Nine men associated with Grove City men's soccer have been inducted into the College's Hall of Fame.



**Peter Buttner '61**  
2010 Inductee



**Ross Emerson '57**  
2009 Inductee



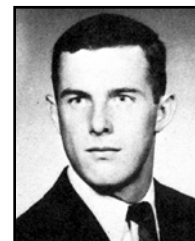
**Bill Juergens '87**  
2014 Inductee



**Matt Lux '70**  
2013 Inductee



**Richard Manley '67**  
2010 Inductee



**John Pontier '68**  
2013 Inductee



**Frank Sbrocco '57**  
2007 Inductee



**Robert E. Thorn '16**  
2007 Inductee



**Cliff Wettig**  
2008 Inductee

# ABOUT THE PAC

Founded in 1955, the Presidents' Athletic Conference continues its mission of promoting intercollegiate athletics and the pursuit of academic excellence.

Comprised of 10 select private colleges and universities - Bethany College, Chatham University, Geneva College, Grove City College, Saint Vincent College, Thiel College, Thomas More College, Washington & Jefferson College, Waynesburg University and Westminster College - the PAC remains a unique organization in this day of high-pressure intercollegiate athletics.

With academics at the center of each member's philosophy, the PAC is built on the principle that an athletic program is a part of college life, but not an entity in itself.

During the 2005-06 academic year, Chatham, Geneva and Saint Vincent all joined the PAC. Chatham competed for PAC championships for the first time during the 2007-08 academic year. Saint Vincent first competed for conference titles in 2010-11.

Geneva became eligible for conference titles in 2011-12.

The PAC annually crowns champions in 19 sports. All-Conference status is awarded in all 19 sports. Head coaches select all-league squads for all team sports, while in individual sports such as cross country and tennis, all-PAC accolades are based upon performances at the conference championships.

The PAC annually awards its men's and women's All-Sports Trophies to the schools which perform best across the board in conference competition.

Grove City won the Women's All-Sports Trophy for the 2013-14 academic year while Washington & Jefferson earned the Men's All-Sports Trophy.

In 2013-14, the league named a conference-record 902 student-athletes to the PAC Academic Honor Roll, which recognizes all participating student-athletes who attain a term grade-point average of 3.60 or above during their semester of competition.

## 2013 Standings

	Conference			Overall		
	W	L	T	W	L	T
Thomas More*	7	0	1	15	3	2
Wash. & Jeff.	5	1	2	10	8	3
Grove City	4	1	3	8	5	6
Geneva	4	3	1	8	7	4
Waynesburg	3	3	2	10	4	3
Westminster	2	3	3	7	9	3
Bethany	2	5	1	7	12	1
Saint Vincent	2	6	0	4	14	0
Thiel	0	7	1	5	12	1

\*-PAC Tournament Champion

## 2013 PAC Statistical Leaders

Goals:	Arkangelo James, Bethany	18
Assists:	Arkangelo James, Bethany	8
Points:	Arkangelo James, Bethany	44
Wins:	Matt Kees, Thomas More	15
GAA:	Brenden Alfery, Grove City	0.69
Save Pct:	Brandon Alfrey, Grove City	.895
Shutouts:	Matt Kees, Thomas More	7

## 2013 ALL-PRESIDENTS' ATHLETIC CONFERENCE TEAMS

### FIRST TEAM

Pos.	Name	School
GK	Jon Best	Wash. & Jeff.
F	Arkangelo James	Bethany
F	Seth Loew	Grove City
F	Austin Juniet	Thomas More
M	Garrett Masters	Geneva
M	Jeremy Troutman	Geneva
M	Dale Reese IV	Grove City
M	Jake Plummer	Thomas More
M	Tim Fields	Waynesburg
D	Luke D'Amico	Saint Vincent
D	Alex Dean	Thomas More

### SECOND TEAM

Pos.	Name	School
GK	Brenden Alfery	Grove City
F	Lamine Balde	Bethany
F	Brian Hannah	Wash. & Jeff.
F	Cody Peddicord	Wash. & Jeff.
M	Brody Ruffner	Saint Vincent
M	Jacob Waldrop	Thomas More
M	Ethan McCarthy	Westminster
D	Dan Adams	Grove City
D	George DeAugustino	Grove City
D	Nicholas Veccio	Wash. & Jeff.
D	Zach Morgan	Waynesburg

**2013 PAC PLAYER OF THE YEAR:** Arkangelo James, Bethany

**2013 PAC COACH OF THE YEAR:** Carl Griffiths, Waynesburg



# GROVE CITY CO



Chris Gibbs earned CoSIDA Academic All-America for the second straight year. He also earned an NCAA Postgraduate Scholarship and the College's Senior Man of Year award.



Emily Rabenold earned Presidents' Athletic Conference MVP honors in both cross country and track and field during the 2013-14 academic year. She qualified for the NCAA Division III Championships in both sports.



Grove City swept the Presidents' Athletic Conference track and field titles in 2014.



Pet  
Pres  
Confer  
Year ho  
time in  
earned  
All-

GROVE CITY COLLEGE SPORTS



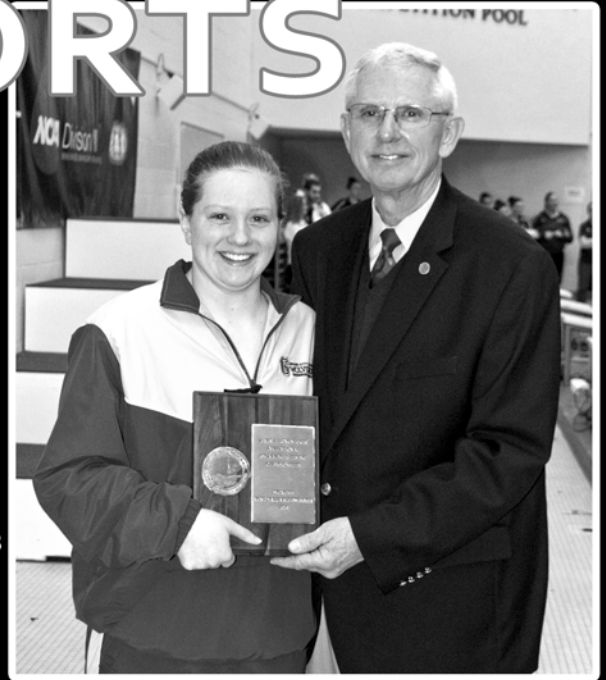


# COLLEGE SPORTS



The Grove City women's golf team became the first Presidents' Athletic Conference program to qualify for the NCAA Division III Women's Golf Championships.

Sophomore Megan Bilko earned NCAA Division III All-America honors in four events at the 2014 NCAA Championships. She also earned Presidents' Athletic Conference MVP.



Riley earned Presidents' Athletic Conference Player of the Year honors for the second year of his career. He also earned CoSIDA Academic District honors.



Grove City's men's swimming and diving team won its fifth Presidents' Athletic Conference titles in the last six seasons.



Sarah Cessar became the first Grove City women's soccer player to earn First Team All-Region in consecutive years.



# ABOUT THE COLLEGE

The beautifully landscaped campus of Grove City College stretches over 150 acres and includes 28 neo-Gothic buildings. It is considered one of the loveliest in the nation.

While the College has changed to meet the needs of the society it serves, its basic philosophy has remained unchanged since its founding in 1876. It is a Christian, liberal arts institution, dedicated to the principle of providing the highest quality education at the lowest possible cost.

Wishing to remain truly independent and to retain its distinctive qualities as a private school governed by private citizens (trustees), it is one of few colleges in the country that does not accept federal funds.

Affiliated with the Presbyterian Church (U.S.A.), but not narrowly denominational, the College believes that to be well-educated a student should be exposed to the central ideas of the Judeo-Christian tradition.

Grove City College offers undergraduate degrees in liberal arts, sciences, engineering, business, and music and is distinguished as a national leader in education.

Grove City's programs in electrical and mechanical engineering are accredited by the Engineering Accreditation Commission Board of the Accreditation Board for Engineering and Technology.

The "big business school curriculum" prepares students for today's global business reality. An extensive variety of internship opportunities are provided across the curriculum.

Grove City College wants its students to be prepared in this age of mobile information technology.

Each entering freshman receives a tablet computer which is his or hers to keep upon graduation with a four-year degree.

This is part of the Information Technology Initiative, a total program integrating technology across the curriculum.



Grove City College's Breen Student Union

The College believes that its student body has a unique mix of talents and abilities.

Its Career Services program helps students identify those key assets during the first year and then builds a four-year strategy to help them pursue a satisfying career.

Personal counseling, professional speakers, databases, alumni contacts, summer internships, corporate visits, employer presentations and more are incorporated into the career preparation experience.

Grove City follows the semester calendar plan, in addition to offering two-week sessions in January and May.

Most of the 2,500 students live in separate men's and women's dormitories. The rest are local commuters or married students.

A full program of cultural, professional, athletic and social activities is offered, including 19 intercollegiate varsity athletic teams.

Grove City, a town of 8,100 people, is located 60 miles north of Pittsburgh. It is located near Interstates 79 and 80 and has a municipal airport.

## Grove City College 2014-2015

### Tuition

\$7,775 per semester

### Room and Board

\$4,236 per semester

### PROGRAMS AND MAJORS

#### ACCOUNTING

Accounting (B.S.)

#### BIBLICAL AND RELIGIOUS STUDIES

Biblical and Religious Studies (B.A.)

#### BIOLOGY

Biology (B.S.)

#### BUSINESS

Business Management (B.S.)

Finance (B.S.)

Industrial Management (B.S.)

International Business (B.S.)

Marketing Management (B.S.)

#### CHEMISTRY

Biochemistry (B.S.)

Chemistry (B.S.)

#### COMMUNICATION STUDIES

Communication Studies (B.A.)

#### COMPUTER SCIENCE

Computer Science (B.S.)

Computer Information Systems (B.S.)

#### ECONOMICS

Economics (B.A.)

Business/Economics (B.S.)

#### EDUCATION

Pre K-4 Elementary Education (B.S.)

Pre K-8 Special Education and Pre K-4

Elementary Education (B.S.)

Middle Level Math/English/Science Education (B.S.)

K-12 Biology/General Science Education (B.S.)

K-12 French Education (B.A.)

K-12 Music Education (B.M.)

K-12 Spanish Education (B.A.)

7-12 Biology/General Science Education (B.S.)

7-12 Chemistry Education (B.S.)

7-12 Chemistry/General Science Education (B.S.)

7-12 English Education (B.A.)

7-12 English/Communication Education (B.A.)

7-12 Mathematics Education (B.S.)

7-12 Physics Education (B.S.)

7-12 Physics/General Science Education (B.S.)

7-12 Social Studies Education (B.A.)

#### ELECTRICAL/COMPUTER ENGINEERING

Electrical/Computer Engineering (B.S.E.E.)

#### ENGLISH

English (B.A.)

#### ENTREPRENEURSHIP

Entrepreneurship (B.S.)

#### HISTORY

History (B.A.)

#### MATHEMATICS

Mathematics (B.S.)

#### MECHANICAL ENGINEERING

Mechanical Engineering (B.S.M.E.)

#### MODERN LANGUAGES

French (B.A.)

Spanish (B.A.)

#### MUSIC & FINE ARTS

Music (B.M.)

Music/Business (B.M.)

Music/Performing Arts (B.M.)

Music/Religion (B.M.)

#### PHILOSOPHY

Philosophy (B.A.)

#### PHYSICAL EDUCATION

Exercise Science (B.S.)

#### PHYSICS

Physics (B.S.)

Physics/Computer Hardware (B.S.)

Physics/Computer Software (B.S.)

#### POLITICAL SCIENCE

Political Science (B.A.)

#### PSYCHOLOGY

Psychology (B.A. or B.S.)

#### SOCIOLOGY

Sociology (B.A.)

#### PRE-PROFESSIONAL PROGRAMS

Pre-Dental

Pre-Health

Pre-Law

Pre-Medical

Pre-Theology

Pre-Veterinary

# ATHLETIC FACILITIES

All 19 of Grove City College's intercollegiate varsity athletic teams utilize the College's superior facilities for competition, practices and off-season training and conditioning.

Grove City's athletic facilities have undergone numerous renovations and improvements in recent years, with more upgrades scheduled in the immediate future.

On lower campus, Robert E. Thorn Field is home to the College's football and track and field teams. The College installed CSTurf at Robert E. Thorn Field. CSTurf is a synthetic playing surface that features polyethylene LSR grass fibers and a rubber infill system.

The College also installed lights and resurfaced the 8-lane track around the field. Grove City also reconfigured its setup for track meets during these renovations.

In 2011, the College installed a new state-of-the-art scoreboard and new bleachers on the visitors' side at Thorn Field.

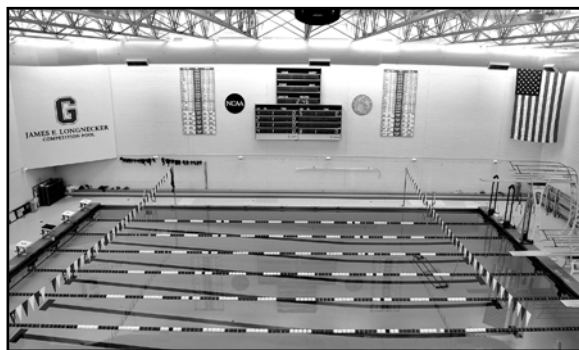
These upgrades benefit the entire campus community as the complex is used by both the College's club sports teams and its intramural program, along with the varsity teams.

The track is also available for use by recreational walkers and joggers. The complex also features 10 all-weather tennis courts next to the stadium.

Phillips Field House, located at the north end of the complex, features several locker rooms, an athletic training room, meeting rooms and coaches' offices. It is used by the football, track and tennis programs throughout the academic year.

The Physical Learning Center (PLC) houses the Grove City College Arena, home to the College's basketball and volleyball programs.

In summer 2012, the College renovated the Arena by installing new lighting and a new playing floor. In recent years, the Arena has also received new scoreboards and scorers' tables.



**The James E. Longnecker Pool is one of the nation's premier small-college venues for both swimming and diving and water polo.**



**The home of Grove City's football and track and field teams, Robert E. Thorn Field has received numerous renovations in recent years.**

In addition, the PLC features the James E. Longnecker Pool, one of the premier aquatic facilities in the region. Each year, Grove City hosts the Presidents' Athletic Conference Swimming and Diving Championships at the state-of-the-art facility.

In 2012, the College also hosted the Collegiate Water Polo Association Division III Championships at the James E. Longnecker Pool.

The PLC also features a second pool, the Recreational Pool, which is used by members of the College community year-round.

A fitness room featuring aerobic and Cybex equipment and a separate weight room with free and mechanized weights are also keystone areas of the facility.

The PLC also features six racquetball/handball courts as well as two adjacent intramural rooms.

The intramural rooms feature four basketball courts, four indoor tennis courts, four volleyball courts, an indoor track and two indoor jumping pits.

The College installed new synthetic flooring and several new electronic scoreboards throughout the intramural rooms.

The Physical Learning Center houses the athletic training room, locker rooms and offices for coaches and physical education faculty.

The College recently constructed a new office suite for coaches and athletic administration, while also incorporating its Athletic Hall of Fame area.

Grove City's outdoor athletic facilities have also received numerous upgrades in recent years.

The varsity soccer field, College Field, was expanded and re-sodded during the summer of 2005. College Field also received a new press box during the summer of 2007.

Meanwhile, Grove City's baseball and softball facilities recently received major facelifts as new dugouts, new fencing and electronic scoreboards were installed on both fields.

# 2014 SCHEDULE

<b>AUG. 29</b>	<b>MT. VERN. NAZARENE</b>	<b>5:00</b>
<b>AUG. 30</b>	<b>PITT-GREENSBURG</b>	<b>4:30</b>
<b>SEPT. 4</b>	<b>AT ALLEGHENY</b>	<b>7:30</b>
<b>SEPT. 6</b>	<b>HILBERT</b>	<b>2:00</b>
<b>SEPT. 9</b>	<b>PENN ST. BERHEND</b>	<b>4:00</b>
<b>SEPT. 13</b>	<b>BALDWIN-WALLACE</b>	<b>3:30</b>
<b>SEPT. 17</b>	<b>AT OBERLIN</b>	<b>7:00</b>
<b>SEPT. 20</b>	<b>AT HEIDELBERG</b>	<b>2:00</b>
<b>SEPT. 27</b>	<b>CARNEGIE MELLON</b>	<b>4:30</b>
<b>OCT. 3</b>	<b>AT WAYNESBURG*</b>	<b>8:00</b>
<b>OCT. 8</b>	<b>THIEL*</b>	<b>4:00</b>
<b>OCT. 11</b>	<b>AT BETHANY*</b>	<b>12:00</b>
<b>OCT. 15</b>	<b>AT GENEVA*</b>	<b>7:30</b>
<b>OCT. 18</b>	<b>WASH. &amp; JEFF.*</b>	<b>3:30</b>
<b>OCT. 21</b>	<b>POINT PARK</b>	<b>3:00</b>
<b>OCT. 25</b>	<b>WESTMINSTER*</b>	<b>2:30</b>
<b>OCT. 29</b>	<b>AT SAINT VINCENT*</b>	<b>3:00</b>
<b>Nov. 1</b>	<b>AT THOMAS MORE*</b>	<b>2:30</b>
<b>Nov. 4-8</b>	<b>PAC CHAMPIONSHIP TOURNAMENT</b>	

**\*-PRESIDENTS' ATHLETIC CONFERENCE MATCH**

**HOME MATCHES IN ALL CAPS**