



Senior Leah Gibson



Senior Alicia Maust

**GROVE CITY COLLEGE
2012-2013
WOMEN'S BASKETBALL**

TABLE OF CONTENTS

2012-2013 SCHEDULE

Nov. 15	at Baptist Bible	7:00
Nov. 20	at Carnegie Mellon	6:00
Nov. 28	at Thomas More*	5:30
Dec. 1	BETHANY*	1:00
Dec. 5	at Waynesburg*	5:30
Dec. 8	SAINT VINCENT*	1:00
Dec. 12	ALLEGHENY	6:00
Dec. 28	Malone (at Cleveland, Ohio)	2:30
Jan. 2	at Chatham*	6:00
Jan. 5	at Geneva*	1:00
Jan. 9	WASHINGTON & JEFFERSON*	6:00
Jan. 12	THIEL*	1:00
Jan. 16	at Westminster*	6:00
Jan. 19	THOMAS MORE*	1:00
Jan. 23	WAYNESBURG*	6:00
Jan. 26	at Bethany*	2:00
Jan. 30	CHATHAM*	6:00
Feb. 2	at Saint Vincent*	4:00
Feb. 6	at Washington & Jefferson*	6:00
Feb. 9	GENEVA* (Hall of Fame Day)	1:00
Feb. 13	WESTMINSTER*	6:00
Feb. 16	at Thiel*	1:00
Feb. 19-23	Presidents' Athletic Conference Championship Tournament	

*Presidents' Athletic Conference Games
Home Games in CAPS

2012-2013 QUICK FACTS

Location	Grove City, Pa.
Enrollment	2,500
Founded	1876
President	Dr. Richard Jewell
Athletic Director	Dr. Don Lyle
AD Phone	(724) 458-2900
Nickname	Wolverines
Colors	Crimson and White
Home Court	Grove City College Arena (1,800)
Conference	Presidents' Athletic Conference
First Season	1977
All-Time Won-Lost	431-376
Head Coach	Michelle Bruns
Alma Mater	Southwest Minn. St. 2005
Record at Grove City	21-32 (3rd year)
Career Record	Same
Basketball Phone	724-450-1531
Assistant Coach	Chelle Fuss
2011-2012 Record	7-19
2011-2012 Conference Record/Finish	6-12/8th
Last Postseason Berth	2005, ECAC
	Lost to DeSales, 71-63
Conference Championships	6
	(1979, 1980, 1981, 1982, 1983, 1987)
Starters Returning/Lost	2/3
Letterwinners Returning/Lost	6/2
Sports Information Director	R.A. Briggs
SID Office Phone	724-458-3365
SID Home Phone	724-748-3718
Web Site	www2.gcc.edu/Sports

ADMINISTRATION

President Dr. Richard Jewell	3
Athletic Director Dr. Don Lyle	3

COACHING STAFF

Head Coach Michelle Bruns	4
Assistant Coach Chelle Fuss	4

THE SEASON

2012-2013 Outlook	5
Team Roster/Team Picture	6

THE VETERANS

Hannah Jo Coneby (Maple Shade, N.J.)	7
Leah Gibson (North Canton, Ohio)	8
Alicia Maust (Natrona Heights, Pa.)	9
Annie Wells (Waterville, Vermont)	10
Cayley McClean (Airville, Pa.)	11
Brandy Nickoloff (Pittsburgh, Pa.)	11
Kelsey Shirey (Macedonia, Ohio)	12

THE NEWCOMERS

Marie Carroll (Pittsburgh, Pa.)	12
Shannon Casey (Long Island, N.Y.)	12
Shelby Davenport (Nederland, Colo.)	13
Kathryn Erbelding (Rochester, N.Y.)	13
Natalija Galens (Covert, Mich.)	13
Mary McDonald (Slippery Rock, Pa.)	13
Ausinette Rodriguez (Frederick, Md.)	14
Megan Walters (Sunbury, Ohio)	14
Madi Zajicek (Pittsburgh, Pa.)	14

SEASON REVIEW

2011-2012 Results and Statistics	15
----------------------------------	----

THE PRESIDENTS' ATHLETIC CONFERENCE

About the Presidents' Athletic Conference	16
Conference Opponent Profiles	17

PROGRAM HISTORY

Record Book	18
The 1,000-Point Club	19
Individual Game Records	19
Through The Years	21
Season Records	22
All-Time Opponent Series	23

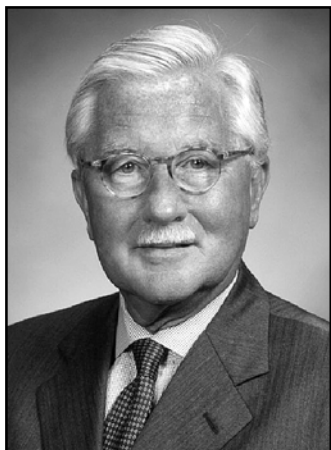
GROVE CITY COLLEGE

Grove City College Sports	24
About Grove City College	26
Grove City College Athletic Facilities	27
Schedule	Back Cover

CREDITS

The Grove City College sports information office produced the 2012-13 women's basketball media guide. Editor: R.A. Briggs. Assistance by Shelby Mander and Zach Struharik. Head shots taken by Gregg Studio, Grove City, Pa. Action photography taken by Dave Miller, ADM Photography and Tim Sofranko. Printed by SCP Group, Sharon, Pa.

PRESIDENT RICHARD JEWELL



Dr. Dick Jewell is a 1967 graduate of Grove City College as well as a graduate of the University of Michigan Law School. He begins his 10th year as Grove City College's eighth President.

Prior to joining the College, Jewell had a long private sector career as both a trial and corporate attorney as well as being a shareholder and director of the nation's largest forensic accounting firm.

He also directed the applied research operations of the University of Pittsburgh, reporting to the Chancellor.

Prior to becoming President in September 2003, Jewell had a 40-year relationship with the College as a student, national alumni president and longtime Trustee.

Jewell graduated cum laude from Grove City with high honors in political science.

In addition, he captained the 1967 swimming and diving team and won two Penn-Ohio Conference diving championships.

He served as editor-in-chief of *The Collegian*, the College's newspaper, as well as president of the Student Government Association. He earned Grove City College's Omicron Delta Kappa Senior Man of the Year award in 1967.

Jewell entered the College's Swimming and Diving Hall of Fame in 1989 and received the College's Distinguished Alumni Service Award in 2001.

He first joined the College's Board of Trustees in 1974 and prior to his selection as President, he served on the Executive Committee and chaired the Board's Development Committee.

He also served as co-chairman of the College's capital campaign and as past president of the Alumni Association.

Jewell currently holds faculty rank in the business department as professor of business law and public policy.

A veteran, Jewell served in the U.S. Army from 1969-1971. Jewell and his wife Dayl, a retired PNC Bank vice president, have an adult daughter, Jessica.

ATHLETIC DIRECTOR DON LYLE



Dr. Don Lyle is in his 11th year as athletic director at Grove City College.

Lyle is Chairman of the Department of Physical Education and Athletics and Athletic Director.

In that role, Lyle oversees the College's fitness and wellness program, its newly-developed exercise science major and Grove City's 19-sport varsity athletics program.

Lyle coached Grove City's men's soccer team from 1972 to 2005. As head coach, he led the Wolverines to six post-season berths, including a pair of trips to the NCAA Championship Tournament.

In 2005, his final season as head coach, Lyle guided Grove City to its first-ever outright Presidents' Athletic Conference title and a trip to the finals of the Eastern College Athletic Conference Southern Championship Tournament. He earned the PAC's Coach of the Year award that year.

Lyle also directed Grove City to a share of the PAC men's soccer title in 1996 as Grove City went 16-2. The Wolverines set a school record for victories in a season and won their first ECAC title.

Lyle-coached teams also advanced to post-season play in 1976, 1980 and 2000. In 34 years as head coach, he compiled a 277-206-37 record. The College inducted him into its Men's Soccer Hall of Fame in October 2006.

Lyle also started the women's softball program at Grove City, posting a 91-61 (.599) record from 1980-88 as head coach. He remains the program's all-time wins leader. Lyle then spent nine years as baseball coach at Grove City.

In addition to his academic duties as department chair, Lyle is a professor of physical education. He is also chairman of the Grove City College Athletic Hall of Fame Selection Committee.

A native of Calcutta, Ohio, Lyle earned his bachelor of arts degree from Muskingum College in 1971. He earned his master's degree in education from Miami of Ohio. Lyle received his doctorate from Indiana University of Pennsylvania.

Lyle and his wife Barbara live in Pine Township. They have three adult children and nine grandchildren.



HEAD COACH MICHELLE BRUNS



Michelle Bruns enters her third season as Grove City College's head women's basketball coach.

She made an immediate impact in her first season at the College, guiding Grove City to a 14-13 record -- the team's best campaign since 2005.

The 2010-11 Wolverines ranked among the national leaders in foul shooting and fewest fouls per game.

Individually, forward Christine Slater led the Presidents' Athletic Conference in scoring and concluded her career as the No. 2 scorer in program history with 1,634 points.

A 2005 graduate of Southwest Minnesota State University, Bruns joined the Grove City staff during the summer of 2010 after working as an assistant master trainer/performance enhancement specialist at the Army Center for Enhanced Performance in West Point, N.Y. since January 2009.

Prior to her position at West Point, Bruns spent three seasons as an assistant women's basketball coach.

She worked as a graduate assistant coach during the 2005-06 season at Eastern Washington University. Bruns then served as the head assistant women's basketball coach

at Adams State (Colo.) College during the 2006-07 and 2007-08 seasons.

At Adams State, she helped the squad triple its win total while also recording the program's first winning record in the Rocky Mountain Athletic Conference since 1992.

Bruns also worked as Adams State's Senior Woman Administrator during the 2007-08 academic year. In addition, she advised the school's Fellowship of Christian Athletes chapter.

A native of Hecla, S.D., Bruns scored 1,645 career points at Southwest Minnesota State. She earned Daktronics Division II All-America Honorable Mention as a senior, along with North Central Region Co-Player of the Year honors.

Bruns also earned the Northern Sun Intercollegiate Conference's Player of the Year honor and SMSU's Female Scholar-Athlete of the Year award as a senior.

In addition, she earned CoSIDA Academic All-America distinction in 2005.

Bruns graduated from Southwest Minnesota State in 2005 with a bachelor of science degree in wellness and human performance.

She completed her master of arts degree in human performance and physical education in December 2008 at Adams State.

The sixth head women's basketball coach in Grove City history, Bruns holds the rank of assistant professor of physical education and exercise science.

ASSISTANT COACH CHELLE FUSS



Chelle Fuss is in her seventh season as an assistant women's basketball coach at Grove City College.

She joined the Grove City athletic department in 2006 after a lengthy stint at Geneva College.

Over the past six seasons, Fuss has played a pivotal role in the basketball program's development and return to the Presidents' Athletic Conference's

upper echelon.

Fuss works primarily with the Wolverine guards while assisting in all aspects of the program and player development.

At Geneva, Fuss worked as assistant women's basketball coach from 1994-96 and again from 1997-99. She played both basketball and softball at Geneva from 1989-93. In basketball, she set a school record with 537 career assists. Her 1,333 points are sixth all-time at Geneva.

She earned NCCAA All-America and NAIA All-District honors in basketball. Fuss also earned NAIA All-District recognition in softball in each of her four seasons.

Fuss is also Grove City's head softball coach and has guided the Wolverines to 82 wins over the past five seasons, including an 18-win season in 2011 and a 19-victory effort in 2012.

Four Grove City softball players have earned Academic All-District recognition from the College Sports Information Directors of America (CoSIDA).

In 2009, Grove City recorded its best start ever in the Presidents' Athletic Conference. The team's 19 wins last year marked the program's highest single-season victory total since 1998.

Overall, Fuss has 167 career wins in nine seasons as a head softball coach.

She earned a bachelor's degree in speech and broadcast communication from Geneva in 1993. Fuss then completed her master's degree in higher education at Geneva.

She is an assistant professor of physical education and exercise science at Grove City.

Fuss and husband Matt have a son, Zane, 13, and a daughter, Logan, 11. The family lives in Pine Township.

2012-13 SEASON PREVIEW

Optimism flows through the Grove City College women's basketball program as the Wolverines enter the 2012-13 season. The Wolverines return three of their top four scorers from last year, including a three-year starter at point guard.

Grove City's seven returning letterwinners have been augmented by one of the largest freshman classes in program history as nine newcomers have joined the fold.

The Wolverines feature three returning starters at guard. Senior point guard Leah Gibson led the Wolverines in scoring last season by averaging 13 points per game. She has started 78 career games and owns 896 career points.

Fellow senior Alicia Maust returns for her second year as a full-time starter. The 5-foot-7 Maust played in all 26 games as a junior and made 18 starts. Like Gibson, Maust is a three-year letterwinner.

Sophomore guard Kelsey Shirey ranked second on the team in assists and rebounds during the 2011-12 season.

She also finished fourth on the team in scoring by averaging seven points per game. Shirey is expected to be a key contributor at both ends.



Sophomore guard Kelsey Shirey played in all 26 games as a freshman and finished second on the team with 62 assists. She is a returning starter.



Sophomore Brandy Nickoloff will look to earn a starting spot in 2012-13 after appearing in 19 games as a rookie.

Up front, 5-11 juniors Hannah Jo Coneby and Annie Wells both return after playing extensively as sophomores.

Coneby led Grove City in rebounding (5.7) and also scored 8.5 points per game. Wells started seven games and led the team with 14 blocked shots. Both players played in all 26 games last year.

Sophomore guard Brandy Nickoloff appeared in 19 games as a freshman and will challenge for a full-time spot in the lineup this year.

Sophomore guard Cayley McClean also looks to break into the rotation after appearing in 13 games last year.

Third-year head coach Michelle Bruns will also look to integrate Grove City's newcomers into the rotation this winter.

Seven of the nine newcomers are listed at 5-10 or taller, giving the Wolverines an element of size that has been absent over the past few seasons.

Grove City opens the season November 15 at Baptist Bible. Conference play begins November 28 at Thomas More. The Wolverines begin their home schedule December 1 against league rival Bethany.

2012-2013 ROSTER

Numerical Roster

No.	Name	Pos.	Ht.	Yr.	Hometown (High School)
10	Madi Zajicek	G	5-5	Fr.	Pittsburgh, Pa. (Chartiers Valley)
11	*** Leah Gibson	G	5-5	Sr.	North Canton, Ohio (Hoover)
12	Shannon Casey	G	5-3	Fr.	Long Island, N.Y. (Smithtown Christian)
20	Megan Walters	G	5-11	Fr.	Sunbury, Ohio (Big Walnut)
22	* Brandy Nickoloff	G	5-8	So.	Pittsburgh, Pa. (Saint Joseph)
24	* Cayley McClean	G	5-8	So.	Airville, Pa. (Kennard-Dale)
30	Natalija Galens	F	5-10	Fr.	Covert, Mich. (Grace Christian)
32	** Annie Wells	F	5-11	Jr.	Waterville, Vt. (Lamoille)
33	* Kelsey Shirey	G	5-7	So.	Macedonia, Ohio (Nordonia)
34	Kathryn Erbeling	F	5-10	Fr.	Rochester, N.Y. (Greece Olympia)
40	Mary McDonald	F	5-10	Fr.	Slippery Rock, Pa. (Portersville Christian)
42	*** Alicia Maust	G	5-7	Sr.	Natrona Heights, Pa. (Cheswick Christian)
44	** Hannah Jo Coneby	F	5-11	Jr.	Maple Shade, N.J. (Baptist)
50	Marie Carroll	C	5-10	So.	Pittsburgh, Pa. (Thomas Jefferson)
52	Shelby Davenport	C	6-0	Fr.	Nederland, Colo. (Fairview)
54	Ausinette Rodriguez	F	5-10	Fr.	Frederick, Md. (Urbana)

Letterwinners Returning (7): Noted with asterisk above

Head Coach: Michelle Bruns

Assistant Coach: Chelle Fuss

SEASON PREVIEW



The 2012-2013 Wolverines

Front Row: Cayley McClean, Kelsey Shirey, Annie Wells, Leah Gibson, Alicia Maust, Hannah Jo Coneby and Brandy Nickoloff. **Back Row:** Team manager Emily Denton, assistant coach Chelle Fuss, Shannon Casey, Madi Zajicek, Natalija Galens, Shelby Davenport, Megan Walters, Kathryn Erbeling, Mary McDonald, Marie Carroll, Ausinette Rodriguez, head coach Michelle Bruns and manager/student assistant Ellie Stoffer.



Hannah Jo Coneby

5-10 • JUNIOR • FORWARD
 MAPLE SHADE, NEW JERSEY
 BAPTIST REGIONAL SCHOOL

Two-year letterwinner in frontcourt ... Will look to earn full-time starting spot at forward this winter.

AS A SOPHOMORE IN 2011-2012

Played in all 26 games, including two starts ... Led team in rebounding and field goal percentage ... Ranked third on team in scoring ... Second on team with 12 blocked shots ... Closed regular season with 19-point, 11-rebound double-double at Thiel February 18, 2012 ... Earned second letter.

AS A FRESHMAN IN 2010-2011

Appeared in all 27 games as a reserve forward ... Made collegiate debut November 16, 2010 by scoring season-high 11 points against Allegheny ... Recorded eight points in 17 minutes against Denison December 14, 2010 ... Second on team with 20 blocked shots ... Scored in 18 of 27 appearances.

HIGH SCHOOL

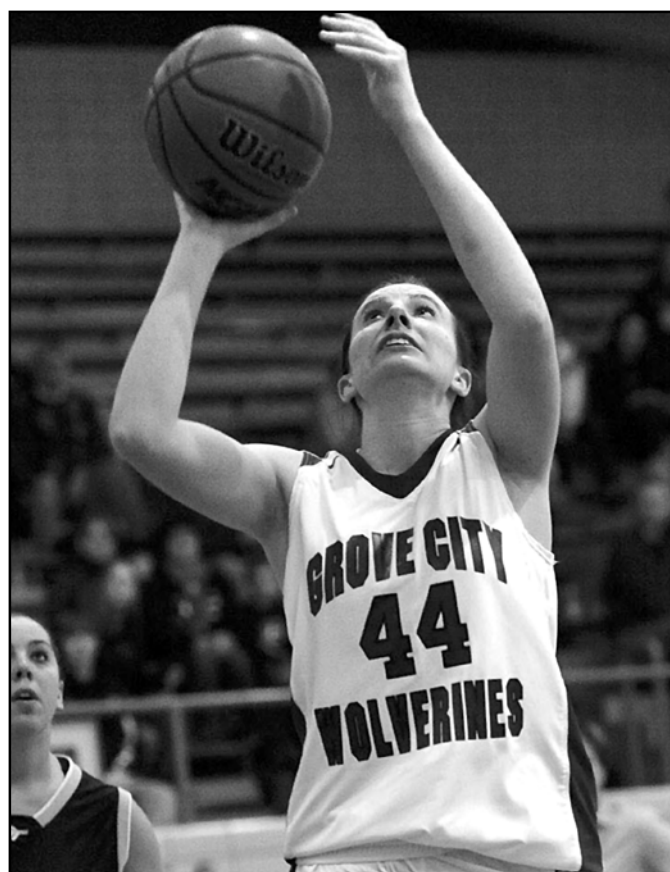
Played at Baptist Regional School in New Jersey suburbs of Philadelphia metropolitan area ... Earned All-Tournament recognition at Valley Forge Tournament as a senior.

GAME HIGHS

19 points (at Thiel, Feb. 18, 2012); 11 rebounds (4 times); 2 assists (6 times); 27 minutes (twice).

NOTABLE

Biology major.



CONEBY'S CAREER STATISTICS

Year	GP-GS	FG	FGA	PCT	3FG	3FGA	PCT	FT	FTA	PCT	REB	RPG	AST	APG	PTS	PPG
2010-2011	27-0	25	60	.417	0	1	.000	19	23	.826	59	2.2	12	0.4	69	2.6
2011-2012	26-2	89	188	.473	0	0	.000	42	55	.764	148	5.7	14	0.5	220	8.5
Totals	53-2	114	248	.460	0	1	.000	61	78	.782	207	3.9	26	0.5	289	5.5



Leah Gibson

5-5 • SENIOR • GUARD
NORTH CANTON, OHIO
HOOVER HIGH SCHOOL

Three-year starter at guard for Grove City ... One of top returning backcourt players in region ... Will be counted on for offensive production and leadership in 2012-13.

AS A JUNIOR IN 2011-2012

Earned third letter after starting all 26 games ... Named Second Team All-Presidents' Athletic Conference ... Led team in scoring and minutes played ... Second on team in steals and three-point goals ... Finished with 338 points, the 21st-highest single-season total in program history.

AS A SOPHOMORE IN 2010-2011

Earned second letter after starting 26 games ... Played in all 27 games ... Second on team in scoring and assists ... Led Presidents' Athletic Conference in free throws made ... Posted 17 double-digit scoring efforts ... Scored career-high 28 points at Hiram December 8, 2010 ... Went 10 for 10 at foul line in conference tournament quarterfinal win over Bethany February 22, 2011 ... Scored 331 points, the fourth-highest total ever produced by a Grove City sophomore.

AS A FRESHMAN IN 2009-2010

Started all 26 games, earning first letter ... Ranked second on team in scoring ... Led team in free throws made and attempted ... Recorded 11 double-digit scoring efforts ... Scored 35 total points in two games against Westminster ... Played 30 minutes or more in 15 games.

HIGH SCHOOL

Earned three letters at North Canton Hoover ... Second Team All-Federal League ... Honorable Mention All-Northeast Ohio.



GAME HIGHS

28 points (at Hiram, Dec. 8, 2010); 8 rebounds (twice); 8 assists (at Wash. & Jeff., Jan. 26, 2011); 38 minutes (at Hiram, Dec. 8, 2010)

NOTABLE

Biology major ... Older brother Ryan played guard for Grove City men's basketball team from 2005 to 2009.

GIBSON'S CAREER STATISTICS

Year	GP-GS	FG	FGA	PCT	3FG	3FGA	PCT	FT	FTA	PCT	REB	RPG	AST	APG	PTS	PPG
2009-2010	26-26	72	219	.329	14	58	.241	69	97	.711	82	3.2	49	1.7	227	8.7
2010-2011	27-26	90	271	.332	34	96	.354	117	149	.785	112	4.1	72	2.7	331	12.3
2011-2012	26-26	120	340	.353	28	110	.255	70	90	.778	100	3.8	56	2.2	338	13.0
Totals	79-78	282	830	.339	76	264	.288	256	336	.762	294	3.7	177	2.2	896	11.3



Alicia Maust

5-7 • SENIOR • GUARD

NATRONA HEIGHTS, PENNSYLVANIA
CHESWICK CHRISTIAN

Three-year letterwinner and returning starter ... One of two seniors on 2012-13 roster ... One of Grove City's most versatile players ... Will look to retain full-time starting spot this season.

AS A JUNIOR IN 2011-2012

Played in all 26 games, earning third collegiate letter ... Made first collegiate start November 15, 2011 at Allegheny ... Highlighted 68-65 win over Washington & Jefferson January 11, 2012 with career-high 12 points in career-high 33 minutes played.

AS A SOPHOMORE IN 2010-2011

Earned second letter ... Emerged as one of Grove City's top reserves, playing in all 27 games ... Played career-high 21 minutes at Waynesburg January 29, 2011 ... Played double-digit minutes in eight games.

AS A FRESHMAN IN 2009-2010

Played in eight games as a reserve ... Earned first letter ... Made collegiate debut at Penn State Behrend November 21, 2009 ... Played season-high five minutes against Hiram December 9.

HIGH SCHOOL

Four-year letterwinner at Cheswick Christian ... Scored over 1,000 points ... Four-time Southwest Christian Athletic Conference Most Valuable Player ... Four-time SWCAC All-Star.

GAME HIGHS

12 points (vs. Wash. & Jeff., Jan. 11, 2012); 6 rebounds (at Chatham, Jan. 7, 2012); 33 minutes (vs. Wash. & Jeff., Jan. 11, 2012).



NOTABLE

Elementary education/early childhood major.

MAUST'S CAREER STATISTICS

Year	GP-GS	FG	FGA	PCT	3FG	3FGA	PCT	FT	FTA	PCT	REB	RPG	AST	APG	PTS	PPG
2009-2010	8-0	0	1	.000	0	0	.000	3	4	.750	1	0.1	0	0.0	3	0.4
2010-2011	27-0	9	25	.360	0	0	.000	6	8	.750	22	0.8	5	0.2	24	0.9
2011-2012	26-18	31	98	.316	0	13	.000	14	21	.667	74	2.8	16	0.6	76	2.9
Totals	61-18	40	124	.323	0	13	.000	23	33	.697	97	1.6	21	0.3	103	1.7





Annie Wells

5-11 • JUNIOR • FORWARD
 WATERVILLE, VERMONT
 LAMOILLE UNION HIGH SCHOOL

Two-year letterwinner who will contend for full-time starting spot in frontcourt this year ... Can play both inside and outside.

AS A SOPHOMORE IN 2011-2012

Moved into starting lineup late in season ... Team won each of her first three starts ... Led team with 14 blocked shots ... Played career-high 33 minutes in Presidents' Athletic Conference Championship Tournament quarterfinal at Thomas More February 21, 2012 ... Finished fourth on team in rebounding.

AS A FRESHMAN IN 2010-2011

Earned first letter after playing in 20 games as a reserve ... Made collegiate debut November 16, 2010 against Allegheny.

HIGH SCHOOL

Four-year letterwinner at Lamoille ... Helped lead team to Division 2 state championship in 2010 ... Also member of 2007 state title team ... Member of state runner-up teams in 2008 and 2009.

GAME HIGHS

8 points (twice); 11 rebounds (twice); 3 assists (vs. Thomas More, Jan. 25, 2012); 33 minutes (at Thomas More, Feb. 21, 2012).

NOTABLE

Communication studies major ... Older sister Alison played two seasons at Grove City (2009-11) and led team with 43 blocked shots in 2010-11.



WELLS' CAREER STATISTICS

Year	GP-GS	FG	FGA	PCT	3FG	3FGA	PCT	FT	FTA	PCT	REB	RPG	AST	APG	PTS	PPG
2010-2011	20-0	3	9	.333	3	8	.375	1	4	.250	6	0.3	2	0.1	10	0.5
2011-2012	26-7	25	68	.368	5	17	.294	5	9	.556	83	3.2	16	0.6	60	2.3
Totals	46-7	28	77	.364	8	25	.320	6	13	.462	89	1.9	18	0.4	70	1.5

THE 2012-2013 WOLVERINES





Cayley McClean

5-8 • SOPHOMORE • GUARD
AIRVILLE, PENNSYLVANIA
KENNARD-DALE HIGH SCHOOL

Returning letterwinner who will contend for time in Wolverine backcourt this winter.

County, Pa. ... Helped Kennard Dale to 18-10 record and berth in PIAA Class AAA playoffs in 2010-11.

AS A FRESHMAN IN 2011-2012

Appeared in 13 games as a reserve forward, earning first collegiate letter ... Made collegiate debut November 15, 2011 at Allegheny.

GAME HIGHS

2 points (3 times); 2 rebounds (twice); 1 assist (at Waynesburg, Jan. 14, 2012); 10 minutes (vs. Chatham, Feb. 8, 2012).

HIGH SCHOOL

Earned two letters at Kennard-Dale High School in York

NOTABLE

Exercise science major.

McCLEAN'S CAREER STATISTICS

Year	GP-GS	FG	FGA	PCT	3FG	3FGA	PCT	FT	FTA	PCT	REB	RPG	AST	APG	PTS	PPG
2011-2012	13-0	3	11	.273	0	0	.000	0	0	.000	7	0.5	1	0.1	6	0.5
Totals	13-0	3	11	.273	0	0	.000	0	0	.000	7	0.5	1	0.1	6	0.5



Brandy Nickoloff

5-8 • SOPHOMORE • GUARD
PITTSBURGH, PENNSYLVANIA
SAINT JOSEPH HIGH SCHOOL

Second-year performer who will compete for starting spot in Grove City backcourt this winter ... Brings size to guard position.

Four-year letterwinner at Saint Joseph ... Helped Spartans advance to WPIAL Class A quarterfinals in 2011.

AS A FRESHMAN IN 2011-2012

Played in 19 games as a reserve, earning first letter ... Played career-high 22 minutes at Waynesburg January 14, 2012 ... Made collegiate debut November 15, 2011 at Allegheny.

GAME HIGHS

5 points (at Waynesburg, Jan. 14, 2012); 3 rebounds (at Chatham, Jan., 7, 2012); 2 assists (at Saint Vincent, Dec. 7, 2011); 1 steal (3 times); 22 minutes (at Waynesburg, Jan. 14, 2012).

NOTABLE

Business management/pre-law major.

NICKOLOFF'S CAREER STATISTICS

Year	GP-GS	FG	FGA	PCT	3FG	3FGA	PCT	FT	FTA	PCT	REB	RPG	AST	APG	PTS	PPG
2011-2012	19-0	7	22	.318	0	3	.000	3	7	.429	14	0.7	9	0.5	17	0.9
Totals	19-0	7	22	.318	0	3	.000	3	7	.429	14	0.7	9	0.5	17	0.9





Kelsey Shirey

5-7 • SOPHOMORE • GUARD
MACEDONIA, OHIO
NORDONIA HIGH SCHOOL

Returning starter in Grove City backcourt ... Expected to be key contributor at both ends of floor this year.

Player in 2011 ... Helped Knights to 49-17 record over final three seasons.

AS A FRESHMAN IN 2011-2012

Started 25 games, earning first letter ... Ranked second on team in assists and rebounds ... Third on team in steals and fourth in scoring.

GAME HIGHS

15 points (at Saint Vincent, Dec. 7, 2011); 9 rebounds (at Bethany, Jan. 21, 2012); 34 minutes (twice).

HIGH SCHOOL

Four-year letterwinner at Nordonia ... Named North-eastern Ohio Conference Lake Division Most Valuable

NOTABLE

Communications studies major ... Starting shortstop for Grove City softball team ... Hit .430 with five home runs in 2012, earning First Team All-Conference.

SHIREY'S CAREER STATISTICS

Year	GP-GS	FG	FGA	PCT	3FG	3FGA	PCT	FT	FTA	PCT	REB	RPG	AST	APG	PTS	PPG
2011-2012	26-25	69	188	.367	14	52	.269	30	45	.667	132	5.1	62	2.4	182	7.0
Totals	26-25	69	188	.367	14	52	.269	30	45	.667	132	5.1	62	2.4	182	7.0



Marie Carroll

5-10 • SOPHOMORE • CENTER
PITTSBURGH, PENNSYLVANIA
THOMAS JEFFERSON HIGH SCHOOL

First-year player who will compete for time in Wolverine frontcourt this winter.



Shannon Casey

5-3 • FRESHMAN • GUARD
LONG ISLAND, NEW YORK
SMITHTOWN CHRISTIAN HIGH SCHOOL

Newcomer who will challenge for time in Wolverine backcourt this season.

HIGH SCHOOL

Earned three letters at Thomas Jefferson ... Helped lead Jaguars to two conference titles and three trips to WPIAL Class AAA playoffs.

HIGH SCHOOL

Four-year letterwinner at Smithtown Christian ... Named school's Female Athlete of the Year for 2011-12.

NOTABLE

Exercise science major.

NOTABLE

Spanish major.



Shelby Davenport

6-0 • FRESHMAN • CENTER
NEDERLAND, COLORADO
FAIRVIEW HIGH SCHOOL

First-year performer who will contend for time in post this winter for Grove City.

HIGH SCHOOL

Earned two letters at Fairview High School, located near Boulder, Colo. ... Helped team advance to second round of state tournament in Class 5A as a senior.

NOTABLE

Elementary/special education major.



Kathryn Erbelding

5-10 • FRESHMAN • FORWARD
ROCHESTER, NEW YORK
GREECE OLYMPIA HIGH SCHOOL

Newcomer who will look to bolster Wolverines at forward position this season.

HIGH SCHOOL

Three-year letterwinner at Greece Olympia ... Named Second Team All-County and team Most Valuable Player in 2011-12.

NOTABLE

Elementary education major.



Natalija Galens

5-10 • FRESHMAN • FORWARD
COVERT, MICHIGAN
GRACE CHRISTIAN HIGH SCHOOL

First-year performer who could challenge for time in Grove City frontcourt this season.

HIGH SCHOOL

Earned five letters at Grace Christian ... Named First Team All-Conference and team MVP as a senior.

NOTABLE

Special education major ... Lettered as member of Grove City volleyball team in fall 2012 after playing in all 31 matches as a freshman.



Mary McDonald

5-10 • FRESHMAN • FORWARD
SLIPPERY ROCK, PENNSYLVANIA
PORTERSVILLE CHRISTIAN HIGH SCHOOL

Newcomer in Grove City frontcourt ... Will contend for spot in Wolverine rotation this winter.

HIGH SCHOOL

Four-year letterwinner at Portersville Christian ... Two-time conference Most Valuable Player ... Three-time team MVP.

NOTABLE

Biology major.





Ausinette Rodriguez

5-10 • FRESHMAN • FORWARD
FREDERICK, MARYLAND
URBANA HIGH SCHOOL

First-year player who will compete for time in Grove City frontcourt this season.

HIGH SCHOOL

Three-year letterwinner at Urbana High School ... Helped team to state semifinals and conference title as a senior.

NOTABLE

Biology major ... From same high school as former Grove City player Christy Faller (1999-2003).



Megan Walters

5-11 • FRESHMAN • GUARD
SUNBURY, OHIO
BIG WALNUT HIGH SCHOOL

Newcomer who brings size to Grove City backcourt ... Will challenge for time at guard for Wolverines.

HIGH SCHOOL

Two-year letterwinner at Big Walnut ... Helped Golden Eagles reach district semifinals in junior and senior seasons ... Earned Ohio Capital Conference Scholar-Athlete honors.

NOTABLE

Exercise science major.



Madi Zajicek

5-5 • FRESHMAN • GUARD
PITTSBURGH, PENNSYLVANIA
CHARTIERS VALLEY HIGH SCHOOL

Newcomer who will push for time in Grove City backcourt this season.

HIGH SCHOOL

Lettered at Chartiers Valley High School.

NOTABLE

Exercise science major ... Lettered as defender for Grove City women's soccer team in fall 2012 ... Helped team advance to second round of NCAA Division III Championship Tournament ... Mother Monica (Yustak) Zajicek played basketball at Grove City and is 2012 Grove City Athletic Hall of Fame inductee.



2011-2012 REVIEW

Overall Record: 7-19

Presidents' Athletic Conference Record: 6-12

GAME-BY-GAME RESULTS

Date	Opponent	Score	W/L	High Scorer	High Rebounder
Nov. 15	at Allegheny	71-56	L	(15) Leah Gibson	(8) Kelsey Shirey
Nov. 18	Alvernia\$	55-54	W	(16) Megan Gebrosky	(5) Gibson/Coneby
Nov. 19	North Carolina Wesleyan\$	56-47	L	(17) Megan Gebrosky	(7) Kelsey Shirey
Nov. 22	CARNEGIE MELLON	73-43	L	(10) Leah Gibson	(6) Jayme Caldwell
Nov. 30	BETHANY*	79-67	L	(18) Leah Gibson	(4) Gebrosky/Wells
Dec. 3	at Thomas More*	71-29	L	(8) Megan Gebrosky	(5) Kelsey Shirey
Dec. 7	at Saint Vincent*	73-53	L	(15) Kelsey Shirey	(5) Leah Gibson
Dec. 10	GENEVA*	48-36	W	(23) Leah Gibson	(5) Hannah Jo Coneby
Dec. 13	at Denison	66-45	L	(12) Sadie Malone	(5) Hannah Jo Coneby
Dec. 30	at Roberts Wesleyan	60-48	L	(14) Hannah Jo Coneby	(6) Gibson/Coneby
Dec. 31	at Houghton	64-57	L	(14) Leah Gibson	(6) Shirey/Coneby
Jan. 4	at Westminster*	61-53	L	(18) Leah Gibson	(7) Kelsey Shirey
Jan. 7	at Chatham*	62-36	W	(23) Leah Gibson	(7) Kelsey Shirey
Jan. 11	WASH. & JEFF.*	68-65	W	(17) Leah Gibson	(11) Hannah Jo Coneby
Jan. 14	at Waynesburg	79-51	L	(11) Leah Gibson	(8) Kelsey Shirey
Jan. 18	THIEL*	65-53	L	(15) Hannah Jo Coneby	(7) Leah Gibson
Jan. 21	at Bethany*	67-61	L	(14) Kelsey Shirey	(9) Kelsey Shirey
Jan. 25	THOMAS MORE*	66-52	L	(17) Leah Gibson	(7) Hannah Jo Coneby
Jan. 28	SAINT VINCENT*	81-52	L	(12) Hannah Jo Coneby	(6) Hannah Jo Coneby
Feb. 1	at Geneva*	46-36	W	(14) Leah Gibson	(7) Kelsey Shirey
Feb. 4	WESTMINSTER*	65-54	W	(20) Leah Gibson	(11) Hannah Jo Coneby
Feb. 8	CHATHAM*	67-55	W	(19) Leah Gibson	(11) Annie Wells
Feb. 11	at Wash. & Jeff.*	74-67	L	(21) Megan Gebrosky	(6) Kelsey Shirey
Feb. 15	WAYNESBURG*	65-53	L	(15) Leah Gibson	(11) Wells/Coneby
Feb. 18	at Thiel*	63-59	L	(19) Hannah Jo Coneby	(11) Hannah Jo Coneby
Feb. 21	at Thomas More%	70-47	L	(12) Megan Gebrosky	(6) Annie Wells

*-Presidents' Athletic Conference Game

\$-Frostburg State Tournament

%-Presidents' Athletic Conference Championship Tournament

Home Games in CAPS

INDIVIDUAL AND TEAM STATISTICS

NAME	/-----TOTAL-----/			/-----3PT-----/				PTS	AVG	OFF REB	DEF REB	TOT REB	AVG	AST	TO	BLK	STL
	GP-GS	FG-FGA	FG%	FG-FGA	FG%	FT-FTA	FT%										
Leah Gibson	26-26	120-340	.353	28-110	.255	70-90	.778	338	13.0	25	75	100	3.8	56	100	1	40
Megan Gebrosky	26-26	93-251	.371	43-130	.331	34-56	.607	263	10.1	7	65	72	2.8	64	62	2	47
Hannah Jo Coneby	26-2	89-188	.473	0-0	.000	42-55	.764	220	8.5	43	105	148	5.7	14	52	12	15
Kelsey Shirey	26-25	69-188	.367	14-52	.269	30-45	.667	182	7.0	19	113	132	5.1	62	78	3	27
Kelsey Whaley	11-0	16-45	.356	5-18	.278	3-5	.600	40	3.6	8	13	21	1.9	6	7	3	0
Sadie Malone	26-0	31-105	.295	23-70	.329	4-6	.667	89	3.4	6	40	46	1.8	9	30	0	11
Jayme Caldwell	26-25	31-73	.425	0-0	.000	19-32	.594	81	3.1	41	27	68	2.6	11	35	4	19
Alicia Maust	26-18	31-98	.316	0-13	.000	14-21	.667	76	2.9	30	44	74	2.8	16	26	0	6
Annie Wells	26-7	25-68	.368	5-17	.294	5-9	.556	60	2.3	24	59	83	3.2	16	25	14	8
Brandy Nickoloff	19-0	7-22	.318	0-3	.000	3-7	.429	17	0.9	2	12	14	0.7	9	16	0	3
Mara Womer	17-0	3-20	.150	1-5	.200	3-7	.429	10	0.6	7	6	13	0.8	7	14	0	1
Ellie Stoffer	11-0	3-11	.273	0-0	.000	0-0	.000	6	0.5	7	8	15	1.4	0	2	0	1
Cayley McClean	13-0	3-11	.273	0-0	.000	0-0	.000	6	0.5	3	4	7	0.5	1	4	0	0
Team										56	70	126	4.8		21		
GROVE CITY	26	526-1437	.366	119-422	.282	233-341	.683	1404	54.0	279	655	934	35.9	276	484	40	183
Opponents	26	604-1514	.399	105-365	.288	327-484	.671	1640	63.1	346	388	1034	39.8	348	402	78	222



ABOUT THE CONFERENCE

PRESIDENTS' ATHLETIC CONFERENCE

Founded in 1955, the Presidents' Athletic Conference continues its mission of promoting intercollegiate athletics and the pursuit of academic excellence.

Comprised of 10 select private colleges - Bethany College, Chatham University, Geneva College, Grove City College, Saint Vincent College, Thiel College, Thomas More College, Washington & Jefferson College, Waynesburg University and Westminster College - the PAC remains a unique organization in this day of high-pressure intercollegiate athletics.

With academics at the center of each member's philosophy, the PAC is built on the principle that an athletic program is a part of college life, but not an entity in itself.

During the 2005-06 academic year, Chatham, Geneva and Saint Vincent all joined the PAC. Chatham competed for PAC championships for the first time during the 2007-08 academic year.

Saint Vincent first competed for conference titles in 2010-11. Geneva became eligible for conference titles in 2011-12.

The PAC annually crowns champions in 19 sports. All-Conference status is awarded in all 19 sports. Head coaches select all-league squads for all team sports, while in individual sports such as cross country and tennis, all-PAC accolades are based upon performances at the conference championships.

The PAC annually awards its men's and women's All-Sports Trophies to the schools which perform best across the board in conference competition.

W&J won the Men's All-Sports Trophy in 2011-12 and Westminster won the Women's All-Sports Trophy. Grove City finished second with 114 total All-Sports points.

In 2011-12, the league named 734 student-athletes to the PAC Academic Honor Roll, which recognizes all participating student-athletes who attain a term grade-point average of 3.60 or above.

2011-12 PAC Champions

Baseball _____	Westminster
Men's Basketball _____	Bethany
Women's Basketball _____	Thomas More
Men's Cross Country _____	Saint Vincent
Women's Cross Country _____	Grove City
Football _____	Thomas More
Men's Golf _____	Wash. & Jeff.
Women's Golf _____	Westminster
Men's Soccer _____	Thomas More
Women's Soccer _____	Thomas More
Women's Softball _____	Geneva
Men's Swimming _____	Grove City
Women's Swimming _____	Grove City
Men's Tennis _____	Grove City
Women's Tennis _____	Grove City
Men's Track and Field _____	Westminster
Women's Track and Field _____	Westminster
Women's Volleyball _____	Geneva
Wrestling _____	Thiel

2011-2012 FINAL STANDINGS

	PAC		Overall	
	W	L	W	L
Thomas More	17	1	25	5
Saint Vincent	15	3	22	7
Waynesburg	14	4	20	8
Bethany	11	7	17	12
Westminster	9	9	9	16
Thiel	8	10	8	18
Washington & Jefferson	7	11	12	14
Grove City	6	12	7	19
Geneva	2	16	3	22
Chatham	1	17	4	21

PAC FIRST TEAM

G	Hannah Hunter	Waynesburg
G	Katie Kitchen	Thomas More
G	Allison Long	Thomas More
F	Devin McGrath	Saint Vincent
F	Brittany Sedlock	Saint Vincent

PAC SECOND TEAM

G	LEAH GIBSON	GROVE CITY
G	Jessi Drayer	Waynesburg
G	Vanessa Rivera	Wash. & Jeff.
F	Kelly Barzak	Thiel
F	Ashley Kirkpatrick	Wash. & Jeff.

TEAM SCORING OFFENSE

	G	PTS	AVG
Thomas More	30	2186	72.9
Saint Vincent	29	2053	70.8
Waynesburg	28	1925	68.8
Bethany	29	1905	65.7
Washington & Jefferson	26	1663	64.0
Thiel	26	1599	61.5
Westminster	25	1377	55.1
Grove City	26	1404	54.0
Chatham	25	1223	48.9
Geneva	25	1077	43.1

TEAM SCORING DEFENSE

	G	PTS	AVG
Waynesburg	28	1598	57.1
Thomas More	30	1722	57.4
Saint Vincent	29	1665	57.4
Westminster	25	1485	59.4
Washington & Jefferson	26	1568	60.3
Geneva	25	1563	62.5
Grove City	26	1640	63.1
Thiel	26	1723	66.3
Chatham	5	1659	66.4
Bethany	29	1944	67.0

INDIVIDUAL SCORING

	G	PTS	AVG
Brittany Sedlock, Saint Vincent	29	483	16.7
Allison Long, Thomas More	30	466	15.5
Katie Kitchen, Thomas More	24	368	15.3
Ashley Kirkpatrick, Wash. & Jeff.	26	383	14.7
Kelly Barzak, Thiel	25	364	14.6

INDIVIDUAL REBOUNDS

	G	REB	AVG
Brittany Sedlock, Saint Vincent	29	292	10.1
Ashley Kirkpatrick, Wash. & Jeff.	26	226	8.7
Devin McGrath, Saint Vincent	29	245	8.4
Carly Zelenak, Chatham	25	199	8.0
Kelly Barzak, Thiel	25	194	7.8



CONFERENCE OPPONENT PROFILES

BETHANY

Location: Bethany, W. Va.
Nickname: Bison
Colors: Kelly Green and White
Head Coach: Rebecca Upton
Career Record: 94-118 (9th year)
2011-12 Record: 17-12
PAC Record/Finish: 11-7/4th
SID: Brian Rose
Phone: 304-829-7292

CHATHAM

Location: Pittsburgh, Pa.
Nickname: Cougars
Colors: Purple and White
Head Coach: Sandra Rectenwald
Career Record: 4-21 (2nd year)
2011-12 Record: 4-21
PAC Record/Finish: 1-17/10th
SID: David Hodge
Phone: 412-365-1650

GENEVA

Location: Beaver Falls, Pa.
Nickname: Golden Tornadoes
Colors: Old Gold and Black
Head Coach: Lori Wynn
Career Record: 88-169 (15th year)
2011-12 Record: 3-22
PAC Record/Finish: 2-16/9th
SID: Van Zanic
Phone: 724-847-6886

SAINT VINCENT

Location: Latrobe, Pa.
Nickname: Bearcats
Colors: Green and Yellow
Head Coach: Jimmy Petruska
Career Record: 37-11 (3rd year)
2011-12 Record: 22-7
PAC Record/Finish: 15-3/2nd
SID: Jeff Zidek
Phone: 724-805-2476

THIEL

Location: Greenville, Pa.
Nickname: Tomcats
Colors: Navy and Old Gold
Head Coach: Rob Clune
Career Record: 0-0 (1st yr at Thiel)
2011-12 Record: 8-18
PAC Record/Finish: 8-10/6th
SID: William Becque
Phone: 724-589-2187

THOMAS MORE

Location: Crestview Hills, Ky.
Nickname: Saints
Colors: Blue and Silver
Head Coach: Jeff Hans
Career Record: 25-5 (2nd year)
2011-12 Record: 25-5
PAC Record/Finish: 17-1/1st
SID: Cory Blackson
Phone: 859-344-3672

WASH. & JEFF.

Location: Washington, Pa.
Nickname: Presidents
Colors: Red and Black
Head Coach: Jina DeRubbo
Career Record: 285-126 (16th year)
2011-12 Record: 12-14
PAC Record/Finish: 7-11/7th
SID: Scott McGuinness
Phone: 724-250-3308

WAYNESBURG

Location: Waynesburg, Pa.
Nickname: Yellow Jackets
Colors: Orange and Black
Head Coach: Sam Jones
Career Record: 58-52 (5th yr)
2011-12 Record: 20-8
PAC Record/Finish: 14-4/3rd
SID: Bobby Fox
Phone: 724-852-3334

WESTMINSTER

Location: New Wilmington, Pa.
Nickname: Titans
Colors: Blue and White
Head Coach: Rosanne Scott
Career Record: 130-139 (11th yr)
2011-12 Record: 9-16
PAC Record/Finish: 9-9/5th
SID: Nathan LaRiccica
Phone: 724-946-6357



Rebecca Upton



Sandy Rectenwald



Lori Wynn



Jimmy Petruska



Rob Clune



Jeff Hans



Jina DeRubbo



Sam Jones



Rosanne Scott

WOLVERINE RECORD BOOK

Top 20 Season Scorers

Name	Year	G	Pts
1. Jody Imbrie	1982-83	27	770
2. Jody Imbrie	1981-82	25	621
3. Jody Imbrie	1980-81	22	513
4. Christine Slater	2010-11	27	507
5. Christine Carlson	1990-91	23	501
6. Kathy Hair	1991-92	25	443
7. Theresa Berg	1991-92	25	439
8. Theresa Berg	1992-93	22	432
9. Christine Slater	2009-10	26	417
10. Christine Slater	2008-09	26	400
11. Carolyn Cochrane	1988-89	23	395
12. Rachel McCoy	2005-06	26	392
13. Jody Imbrie	1979-80	17	384
14. Christine Carlson	1989-90	22	380
15. Brenda Kanar	1985-86	22	367
16. Beth Lora	1996-97	25	364
17. Debby Buzanoski	1984-85	20	356
18. Monica Yustak	1985-86	21	340
19. Kathy Hair	1990-91	23	340
20. Betsy Shaw	1982-83	26	339

Top 10 Season Scoring Averages

Name	Year	Pts	Avg
1. Jody Imbrie	1982-83	770	28.5
2. Jody Imbrie	1981-82	621	24.8
3. Jody Imbrie	1980-81	513	23.3
4. Jody Imbrie	1979-80	384	22.6
5. Christine Carlson	1990-91	501	21.8
6. Christine Slater	2010-11	507	18.8
7. Debby Buzanoski	1984-85	356	17.8
Abby Moose	2004-05	338	17.8
9. Kathy Hair	1991-92	443	17.7
10. Theresa Berg	1991-92	439	17.6

Top 5 Season Rebound Totals

Name	Year	Reb	Avg
1. Carolyn Cochrane	1988-89	363	15.8
2. Betsy Shaw	1982-83	350	13.0
3. Karen Watkins	1981-82	287	11.5
4. Carolyn Cochrane	1987-88	282	12.8
5. Betsy Shaw	1981-82	279	11.2

Top 5 Career Rebound Totals

Name	Year	Total
1. Carolyn Cochrane	1985-89	1,110
2. Christine Slater	2007-11	901
3. Karen Watkins	1978-82	862
4. Karin Hendrickson	1995-99	711
5. Rachel McCoy	2004-07	640

Top 5 Season Assist Totals

Name	Year	Ast	Avg
1. Michelle Tanksley	1983-84	165	6.9
2. Michelle Tanksley	1984-85	123	5.9
3. Jody Imbrie	1982-83	111	4.1
4. Karin Hendrickson	1996-97	108	4.2
5. Michelle Tanksley	1985-86	104	4.7

Top 5 Career Assist Totals

Name	Year	Ast
1. Michelle Tanksley	1983-87	490
2. Jody Imbrie	1979-83	392
3. Karin Hendrickson	1995-99	347
4. Megan Gebrosky	2008-12	240
5. T.L. Thompson	1998-2002	226

Top 5 Single-Season Block Totals

Name	Year	Blk	Avg
1. Rachel McCoy	2006-07	68	2.7
2. Sandy O'Keefe	2003-04	52	2.1
Rachel McCoy	2005-06	52	2.0
4. Sandy O'Keefe	2002-03	48	1.8
5. Sandy O'Keefe	2004-05	47	1.8

Top 5 Career Block Totals

Name	Year	Blk
1. Rachel McCoy	2004-07	164
2. Sandy O'Keefe	2001-05	150
3. Brittany Anderson	2004-08	98
4. Livia Wright	1998-2001	64
5. Jocelyn Kempema	2001-05	60

Top 5 Single-Season Three-Point Totals

Name	Year	FG
1. Abby Moose	2002-03	62
2. Elyse Bogusz	2004-07	44
3. Abby Moose	2003-04	43
Megan Gebrosky	20011-12	43
5. Stephanie Murphy	2000-01	42

Top 5 Career Three-Point Totals

Name	Year	FG
1. Abby Moose	2001-05	172
2. Megan Gebrosky	2008-12	131
3. Stephanie Murphy	1998-2002	117
4. Christine Slater	2007-11	115
5. Elyse Bogusz	2004-07	86

THE 1,000-POINT CLUB



Jody Imbrie
2,288
1979-83



Christine Slater
1,634
2007-11



Theresa Berg
1,347
1989-93



Christine Carlson
1,337
1987-91



Beth Lora
1,250
1994-98



Abby Moose
1,209
2001-05



Brenda Kanar
1,183
1983-87



Carolyn Cochrane
1,153
1985-89



Karin Hendrickson
1,081
1995-99



Rachel McCoy
1,036
2004-07

INDIVIDUAL GAME RECORDS

Points

41, Jody Imbrie vs. Youngstown State, Jan. 29, 1983

Field Goal Attempts

39, Jody Imbrie vs. Clarion, Jan. 16, 1981

Field Goals Made

16, Jody Imbrie vs. Westminster, Jan. 23, 1981

Field Goal Percentage

92.8 (13 of 14), Kathy Hair vs. Thiel, Jan. 22, 1992

Free Throw Attempts

23, Jody Imbrie vs. Walsh, Jan. 28, 1982

23, Imbrie vs. Penn State Behrend, Jan. 7, 1981

Free Throws Made

19, Jody Imbrie vs. Walsh, Jan. 28, 1982

Free Throw Percentage

100 (11 of 11), Theresa Berg vs. John Carroll, Jan. 28, 1990

Three-Point Attempts

15, Joni Pavlasky vs. Wash. & Jeff., Jan. 10, 1990

Three-Point Goals Made

6, Stephanie Murphy vs. Dubuque, Dec. 28, 2000

6, Joni Pavlasky vs. Wash. & Jeff., Jan. 10, 1990

Three-Point Percentage

100.0 (4 of 4), Gayle Crytzer vs. Thiel, Feb. 5, 1994

100.0 (4 of 4), Shannon Overdorff vs. Manchester, Dec. 3, 2005

Rebounds

28, Carolyn Cochrane vs. Penn State-DuBois, Dec. 3, 1988

Blocks

8, Alison Wells vs. Wash. & Jeff., Jan. 26, 2011

Team Game Records

Points For: 104, vs. Westminster, Dec. 3, 1991

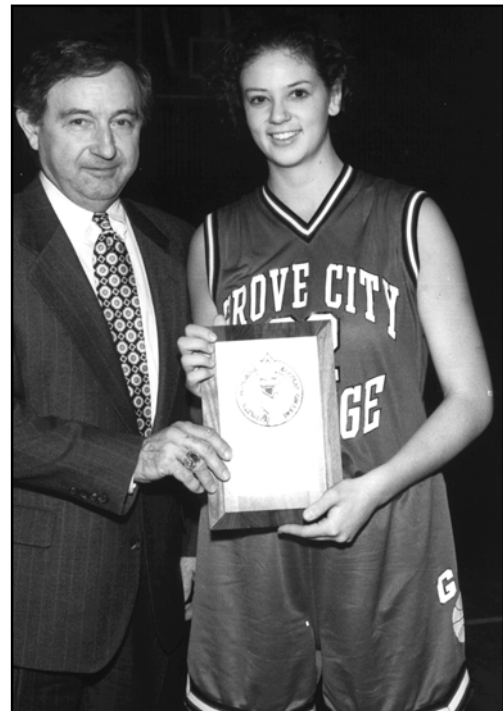
Points Against: 101, vs. John Carroll, Dec. 3, 1992

Rebounds: 96, vs. Villa Maria, Feb. 20, 1984

THROUGH THE YEARS



In 1997, Grove City captured the ECAC Southern Championship with a 67-63 overtime victory over Ursinus (above). Junior Beth Lora (right) earned tournament MVP honors after averaging 26.5 points per game in the tournament.



Abby Moose is Grove City's all-time leader with 172 three-point goals. In 2005, Moose represented the United States at the Deaflympics in Melbourne, Australia.



Jody Imbrie (center) became the program's first All-American in 1983 after helping Grove City to a 22-5 record and a berth in the NCAA Division III Tournament. She is Grove City's all-time leading scorer with 2,288 points.

RECORDS/OPPONENT SERIES

Year-By-Year Records

Year	W	L	Pct.	Head Coach	Year	W	L	Pct.	Head Coach
1976-77	7	4	.636	Terry Ellis	1994-95	4	20	.167	Melissa Lamie
1977-78	7	5	.583	Terry Ellis	1995-96	12	12	.500	Melissa Lamie
1978-79	13	1	.929	Terry Ellis	1996-97	17	9	.654	Melissa Lamie
1979-80	16	1	.941	Terry Ellis	1997-98	16	9	.640	Melissa Lamie
1980-81	19	3	.864	Terry Ellis	1998-99	14	10	.583	Melissa Lamie
1981-82	19	6	.760	Terry Ellis	1999-00	16	13	.552	Melissa Lamie
1982-83	22	5	.815	Terry Ellis	2000-01	15	10	.600	Melissa Lamie
1983-84	12	12	.500	Judy Zarenko	2001-02	14	12	.538	Melissa Lamie
1984-85	10	11	.476	Judy Zarenko	2002-03	12	14	.462	Melissa Lamie
1985-86	11	11	.500	Susan Roberts	2003-04	14	11	.560	Melissa Lamie
1986-87	17	3	.850	Susan Roberts	2004-05	16	10	.615	Melissa Lamie
1987-88	7	15	.318	Susan Roberts	2005-06	7	19	.269	Melissa Lamie
1988-89	16	7	.696	Susan Roberts	2006-07	5	20	.200	Sarah Harris
1989-90	11	11	.500	Susan Roberts	2007-08	11	16	.407	Sarah Harris
1990-91	15	8	.652	Susan Roberts	2008-09	11	15	.423	Sarah Harris
1991-92	14	11	.560	Susan Roberts	2009-10	12	14	.462	Sarah Harris
1992-93	10	12	.455	Susan Roberts	2010-11	14	13	.519	Michelle Bruns
1993-94	0	22	.000	Melissa Lamie	2011-12	7	19	.269	Michelle Bruns

All-Time Opponent Series

Opponent	W	L	First	Last	Opponent	W	L	First	Last
Alfred	3	0	1996-97	1997-98	Lebanon Valley	1	0	1999-00	1999-00
Allegheny	15	26	1976-77	2011-12	Lycoming	0	1	1991-92	1991-92
Alvernia	3	0	1999-00	2011-12	Malone	0	2	1981-82	1982-83
Augustana	0	1	1981-82	1981-82	Manchester	0	1	2005-06	2005-06
Baldwin-Wallace	1	15	1982-83	2004-05	Marietta	1	0	2007-08	2007-08
Bethany	11	29	1984-85	2011-12	Mercyhurst	11	0	1976-77	1985-86
Bluffton	1	0	2007-08	2007-08	Messiah	0	2	2002-03	2005-06
Buffalo State	0	2	2005-06	2010-11	Millersville	0	1	1981-82	1981-82
Cabrini	1	0	1999-00	1999-00	Montclair State	1	1	2003-04	2007-08
Carnegie Mellon	19	17	1982-83	2011-12	Mount Union	8	4	1976-77	2010-11
Carlow	0	2	1993-94	1994-95	N.C. Wesleyan	0	1	2011-12	2011-12
Case Western Reserve	1	4	2004-05	2008-09	North Park	0	1	1996-97	1996-97
Cedarville	0	1	2002-03	2002-03	Notre Dame, Ohio	1	0	1999-00	1999-00
Chatham	9	5	1996-97	2011-12	Oberlin	2	0	1994-95	1995-96
Clarion	4	6	1979-80	1991-92	Ohio Northern	0	1	1983-84	1983-84
Colorado College	1	0	1998-99	1998-99	Ohio Wesleyan	0	2	1992-93	2000-01
Daemen	0	1	2008-09	2008-09	Olivet	1	0	1995-96	1995-96
Defiance	0	1	1997-98	1997-98	Penn State Altoona	2	0	2001-02	2002-03
Delaware Valley	0	1	1989-90	1989-90	Penn State Behrend	31	17	1976-77	2009-10
Denison	1	3	2004-05	2011-12	Penn State-DuBois	1	0	1988-89	1988-89
DeSales	0	2	2000-01	2004-05	Penn State-Shenango	3	3	1977-78	1981-82
Dickinson	1	0	1997-98	1997-98	Pitt-Bradford	8	3	1990-91	2004-05
Dubuque	1	0	2000-01	2000-01	Pitt-Greensburg	5	3	1996-97	2005-06
D'Youville	3	0	1998-99	1999-00	Point Park	4	1	1979-80	2006-07
Eastern	0	1	2008-09	2008-09	Robert Morris	2	1	1980-81	1982-83
Edinboro	1	1	1981-82	1983-84	Roberts Wesleyan	0	1	2011-12	2011-12
Elizabethtown	1	2	1980-81	2001-02	Saint Vincent	2	12	1992-93	2011-12
Fairmont State	0	1	1987-88	1987-88	Sage	1	0	2010-11	2010-11
Flagler	0	1	2001-02	2001-02	St. John Fisher	0	1	1996-97	1996-97
Frostburg State	2	5	1982-83	1985-86	St. Leo	0	1	2001-02	2001-02
Gannon	3	3	1976-77	1987-88	St. Mary's	0	2	1998-99	1999-00
Geneva	27	22	1976-77	2011-12	Shenandoah	1	0	2001-02	2001-02
Gettysburg	0	2	2002-03	2007-08	Simpson	0	1	1998-99	1998-99
Goucher	0	1	2006-07	2006-07	Slippery Rock	4	7	1980-81	1989-90
Hanover	0	1	1999-00	1999-00	Susquehanna	1	1	1982-83	2001-02
Hawaii Pacific	2	0	1982-83	1982-83	Thiel	52	20	1976-77	2011-12
Heidelberg	1	1	1983-84	2004-05	Thomas More	0	18	2005-06	2011-12
Hilbert	1	0	2003-04	2003-04	Ursinus	3	1	1988-89	2008-09
Hiram	15	9	1979-80	2010-11	Ursuline	1	0	2000-01	2000-01
Houghton	0	1	2011-12	2011-12	Villa Maria	8	0	1976-77	1983-84
Immaculata	0	1	2006-07	2006-07	Walsh	4	2	1980-81	2004-05
John Carroll	5	9	1984-85	2004-05	Washington, Md.	1	0	1997-98	1997-98
Juniata	8	6	1981-82	2006-07	Wash. and Jeff.	25	39	1980-81	2011-12
Kent State-Trumbull	1	0	1978-79	1978-79	Waynesburg	32	18	1989-90	2011-12
Kenyon	0	1	2009-10	2009-10	Westminster	40	28	1976-77	2011-12
Keuka	1	0	1996-97	1996-97	Wheeling Jesuit	1	0	2000-01	2000-01
Kings	2	0	1991-92	1996-97	Wittenberg	0	1	2009-10	2009-10
Lake Erie	4	0	1994-95	1996-97	Wilmington	0	2	1998-99	2009-10
La Roche	8	1	1995-96	2006-07	Wooster	2	6	1989-90	2004-05
					Youngstown State	0	1	1982-83	1982-83



PROGRAM HISTORY

The date was February 2, 1977. Punxsutawney Phil saw his shadow for the sixth time in seven years, leaving the nation with six more weeks of winter.

But what the famous rodent did not foresee is the successful run that would begin later that night for the Grove City College women's basketball team.

That night, the Grove City College women's basketball team made its intercollegiate debut with a 61-50 win at Penn State Behrend.

Since that historic night in 1977, Grove City has earned over 400 victories, numerous postseason berths and six conference championships.

The 1977 team finished 7-4 under head coach Terry Ellis, including a 6-2 record in the Women's Keystone Conference. Grove City's season ended with a 60-55 loss to Allegheny in the WKC playoffs, however.

That started a run of seven consecutive winning seasons for the Wolverine program.

Grove City's 1978 squad again reached the WKC playoffs by going 5-2 in the league, 7-5 overall. The following season, Grove City captured its first conference title by storming to a 7-0 league record during the 1978-79 season.

The Wolverines finished 13-1 overall, including a 12-0 mark against NCAA opponents.

The Wolverines rolled to another WKC championship with a 7-0 league record in the 1979-80 season, finishing 16-1 overall, which is still the best season in program history.

On her way to becoming Grove City's all-time leading scorer, then-freshman Jody Imbrie led the Wolverines by averaging 22.6 points per game as a rookie.

Grove City stormed to its third straight league title in the 1980-81 season, going 6-1 in the league and 19-3 overall. The following season, the Wolverines would earn their first-ever NCAA Tournament.

In 1981-82, Grove City claimed its fourth straight WKC title and qualified for the first-ever NCAA Division III Women's



The 1981-82 NCAA Team



The 1982-83 NCAA Team

Basketball Championship Tournament with a 19-5 record. Grove City fell to Augustana (Ill.) in the first round, 83-62.

Senior Karen Watkins closed her career as Grove City's all-time leading rebounder with 862 boards while Imbrie became the program's first 1,000-point scorer.

Grove City returned to the NCAA Tournament the following season after winning its fifth straight WKC title with a 10-2 league mark.

The Wolverines downed Susquehanna in the first round, 60-58, but fell in the second round to defending national champion Elizabethtown, 59-55. Grove City finished the season with a school-record 22 wins.

Imbrie registered a school-record 770 points in 27 games, finishing her career as Grove City's all-time leading scorer with 2,288 points.

She also set the single-game scoring record that season with 41 points against Youngstown State Jan. 29, 1983.

Ellis stepped down as head coach following the 1982-83 season, finishing with a 102-26 (.792) record.

Judy Zarenko coached Grove City to a 22-23 aggregate record during the 1983-84 and 1984-85 seasons. Grove City finished second in the WKC in 1984-85 with a 4-1 record.

Susan Roberts, currently associate athletic director at Grove City, assumed control of the program prior to the 1985-86 season.

A new challenge awaited Grove City that year: the Presidents' Athletic Conference. Grove City College joined the PAC prior to the 1984-85 season but 1985-86 marked the first season the league sponsored a women's basketball championship.

Grove City went 7-5 in its first season of PAC play and 11-11 overall.

The next season, Grove City secured its first PAC championship with a 12-0 league mark. Senior Brenda Kanar (1,183) became the program's second 1,000-point scorer during the season, helping the Wolverines post a 17-3 overall record. Senior Monica Yustak earned the conference's Most Valuable Player award that season.

PROGRAM HISTORY



The 1986-87 PAC Championship Team

As the 1980s closed and the 1990s began, Grove City collected four consecutive runner-up finishes in the PAC.

Carolyn Cochrane (1,153) joined Imbrie and Kanar in the 1,000-point club during the 1988-89 season while Christine Carlson (1987-91) finished her career with 1,337 points. Cochrane also graduated with 1,110 rebounds, the most in College history.

As a senior, Carlson became just the second Grove City player to eclipse the 500-point mark in one season during the 1990-91 campaign.

In Roberts' final year as head coach, Theresa Berg moved ahead of Carlson into second place on Grove City's all-time scoring list with 1,347 points.

Roberts finished with a 101-78 record as head coach, second all-time to Ellis in both victories and winning percentage.

Melissa Lamie inherited a very young Grove City team prior to the 1993-94 season. Over the next two seasons, Grove City won just four of 46 games. But the foundation for future success had been established.

Grove City rebounded to a 12-12 season in 1995-96. The following year, Grove City went 15-9 during the regular season and earned its first-ever ECAC Tournament bid.

Led by tournament MVP Beth Lora, the Wolverines captured the 1997 ECAC title with a 67-63 overtime win over Ursinus in Wilkes-Barre, Pa. Lora's 33-point effort in the semifinals lifted Grove City to a 71-68 win over top-seeded King's.

In 1997-98, Lora went over the 1,000-point mark and finished as Grove City's fourth all-time leading scorer with 1,250 points.

Grove City finished 16-9, reaching the ECAC semifinals before being eliminated by Pitt-Bradford.

Senior Karin Hendrickson helped lead Grove City to another runner-up finish in the Presidents' Athletic Conference during the 1998-99 season.

She became Grove City's seventh 1,000-point scorer and also graduated as the College's all-time leader in steals with 247.

Grove City returned to the ECAC tournament in 2000 as the fifth seed in the six-team tournament.

Grove City knocked off Alvernia in the quarterfinals, then upset top-seeded Lebanon Valley in the semifinals. Grove City fell to Carnegie Mellon, 66-54, in the championship game.

That year, Grove City set a new school record by playing 29 games and by winning three total postseason games.

The Wolverines celebrated their silver anniversary season by earning their fourth ECAC berth in five years in 2001.

Grove City lost to host DeSales in the quarterfinals, however, 72-49.

Grove City earned another second-place finish in the PAC in the 2001-2002 season as guard Stephanie Murphy became the first Grove City player to play in 100 games.

In addition, Lamie became Grove City's all-time wins leader when the Wolverines pulled out a last-second 53-52 win at Washington & Jefferson Jan. 23, 2002.

In 2002-2003, guard Cara Denniston established a new Grove City record by playing in 106 straight games. Denniston helped Grove City rebound from a 1-9 start to earn runner-up honors behind NCAA qualifier Washington & Jefferson.

Following a 14-11 season in 2003-2004, Grove City returned to the postseason in 2004-2005 with a 16-8 regular season record.

Grove City went 8-2 in the PAC and shared the conference's regular season title. The Wolverines then advanced to the ECAC Southern Championship Tournament before falling in the quarterfinals to eventual ECAC champ DeSales, 71-63.

Senior guard Abby Moose closed her career with 1,209 career points, the fifth-highest total in school history. Center Sandy O'Keefe graduated as the program's all-time leader in blocked shots.

Lamie stepped down to concentrate on her duties as Grove City's head women's soccer coach after the 2005-06 season.

Sarah Harris took over as Grove City head coach and during the 2006-07 season, center Rachel McCoy became Grove City's ninth all-time 1,000-point scorer, finishing her career with 1,036 points.

In 2008-09, Grove City returned to the conference's upper echelon by posting a 7-7 league mark. Grove City also recorded its 400th all-time victory December 3, 2008 by defeating longtime rival Geneva.

Forward Christine Slater fired in 400 points during the season, becoming the fifth Grove City player to achieve that feat.

In 2009-10, Slater scored her 1,000th point and helped the Wolverines to an 8-6 conference record.

A new era began in 2010-11 as first-year head coach Michelle Bruns took over prior to the season and led Grove City to its first winning season since 2005. Slater concluded her career as the second-leading scorer (1,634) and rebounder (901) in program history.



GROVE CITY CO



Grove City's women's water polo team won its third straight CWPA Division III title in 2012.



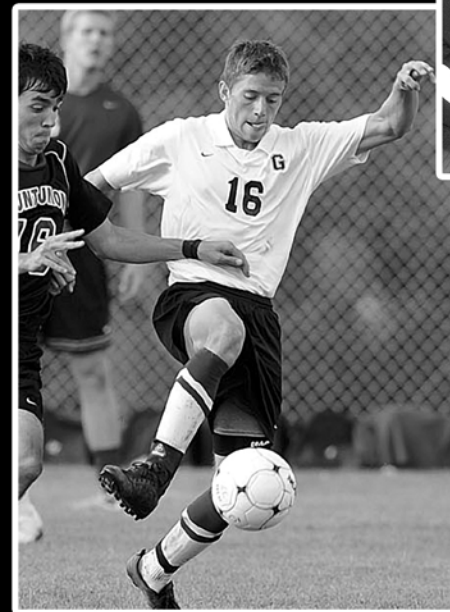
Golfer Esther Durling captured Presidents' Athletic Conference Player of the Year honors for 2012.



Grove City's women's soccer team won its 200th all-time victory in 2012.



Swimmer Angela Palumbo became a 15-time NCAA All-American and also earned CoSIDA Academic All-America in 2012. She became the first junior to earn Grove City Sportswoman of the Year.



Tim Boswell earned Grove City's 2012 Senior Man of the Year award as well as CoSIDA Academic All-America honors.



Grove City's women's tennis team advanced to the NCAA Tournament for the fourth straight year after securing the program's 25th straight conference title in 2011-12.

GROVE CITY COLLEGE SPORTS



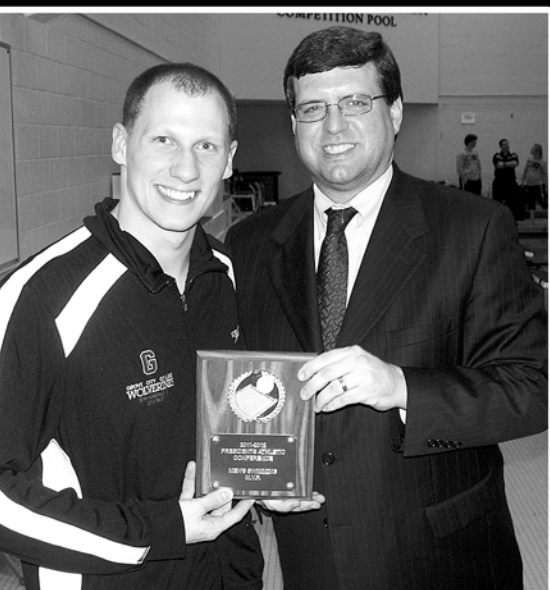
COLLEGE SPORTS



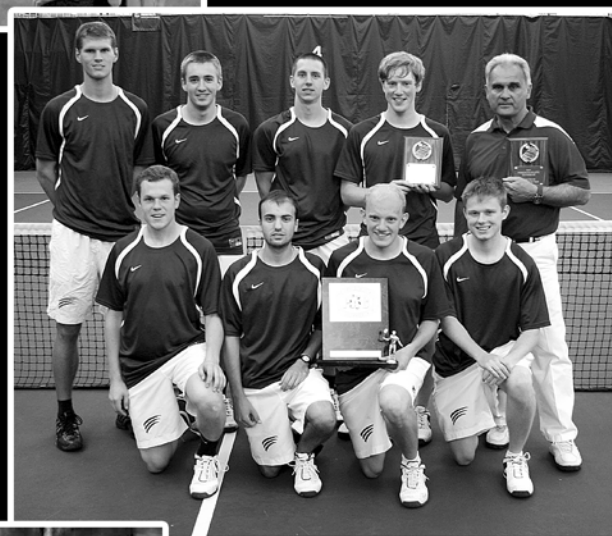
Women's soccer team recorded a win during the 2011 season.



In 2012, senior football player Tim Irwin became the first Grove City student-athlete in two decades to earn an NCAA Postgraduate Scholarship. Irwin also earned the College's Sportsman of the Year award for the 2011-12 academic year.



Swimmer Ben Bowser (above left) capped his career at Grove City by earning PAC Most Valuable Performer honors for the second straight season in 2011-12.



The Grove City men's tennis team won its 22nd straight conference title and advanced to the NCAA Tournament regional semifinals in 2012.



Junior Ella Smith earned All-Mideast Region for the third straight season after helping Grove City to fifth place overall at the Mideast Championships. Grove City also won its 22nd straight conference title.

GROVE CITY COLLEGE SPORTS

e
the
DA
ors.



ABOUT THE COLLEGE

The beautifully landscaped campus of Grove City College stretches over 150 acres and includes 28 neo-Gothic buildings. It is considered one of the loveliest in the nation.

While the College has changed to meet the needs of the society it serves, its basic philosophy has remained unchanged since its founding in 1876. It is a Christian, liberal arts institution, dedicated to the principle of providing the highest quality education at the lowest possible cost.

Wishing to remain truly independent and to retain its distinctive qualities as a private school governed by private citizens (trustees), it is one of few colleges in the country that does not accept federal funds.

Affiliated with the Presbyterian Church (U.S.A.), but not narrowly denominational, the College believes that to be well-educated a student should be exposed to the central ideas of the Judeo-Christian tradition.

Grove City College offers undergraduate degrees in liberal arts, sciences, engineering, business, and music and is distinguished as a national leader in education.

Grove City's programs in electrical and mechanical engineering are accredited by the Engineering Accreditation Commission Board of the Accreditation Board for Engineering and Technology.

The "big business school curriculum" prepares students for today's global business reality. An extensive variety of internship opportunities are provided across the curriculum.

Grove City College wants its students to be prepared in this age of mobile information technology.

Each entering freshman receives a tablet computer which is his or hers to keep upon graduation with a four-year degree.

This is part of the Information Technology Initiative, a total program integrating technology across the curriculum.



**Grove City College's
Breen Student Union**

The College believes that its student body has a unique mix of talents and abilities.

Its Career Services program helps students identify those key assets during the first year and then builds a four-year strategy to help them pursue a satisfying career.

Personal counseling, professional speakers, databases, alumni contacts, summer internships, corporate visits, employer presentations and more are incorporated into the career preparation experience.

Grove City follows the semester calendar plan, in addition to offering two-week sessions in January and May.

Most of the 2,500 students live in separate men's and women's dormitories. The rest are local commuters or married students.

A full program of cultural, professional, athletic and social activities is offered, including 19 intercollegiate varsity athletic teams.

Grove City, a town of 8,100 people, is located 60 miles north of Pittsburgh. It is located near Interstates 79 and 80 and has a municipal airport.

Grove City College 2012-2013

Tuition

\$7,106 per semester

Room and Board

\$3,872 per semester

PROGRAMS AND MAJORS

ACCOUNTING

Accounting (B.S.)

BIBLICAL AND RELIGIOUS STUDIES

Biblical and Religious Studies (B.A.)

BIOLOGY

Biology (B.S.)

Molecular Biology (B.S.)

BUSINESS

Business Management (B.S.)

Finance (B.S.)

Industrial Management (B.S.)

International Business (B.S.)

Marketing Management (B.S.)

CHEMISTRY

Biochemistry (B.S.)

Chemistry (B.S.)

COMMUNICATION STUDIES

Communication Studies (B.A.)

COMPUTER SCIENCE

Computer Science (B.S.)

Computer Information Systems (B.S.)

ECONOMICS

Economics (B.A.)

Business/Economics (B.S.)

EDUCATION

Pre K-4 Elementary Education (B.S.)

Pre K-8 Special Education and Pre K-4

Elementary Education (B.S.)

Middle Level Math/English/Science Educ. (B.S.)

K-12 Biology/General Science Educ. (B.S.)

K-12 French Education (B.A.)

K-12 Music Education (B.M.)

K-12 Spanish Education (B.A.)

7-12 Biology/General Science Educ. (B.S.)

7-12 Chemistry Education (B.S.)

7-12 Chemistry/Gen. Science Educ. (B.S.)

7-12 English Education (B.A.)

7-12 English/Communication Educ. (B.A.)

7-12 Mathematics Education (B.S.)

7-12 Physics Education (B.S.)

7-12 Physics/Gen. Science Educ. (B.S.)

7-12 Social Studies Education (B.A.)

ELECTRICAL/COMPUTER ENGINEERING

Electrical/Computer Engineering (B.S.E.E.)

ENGLISH

English (B.A.)

ENTREPRENEURSHIP

Entrepreneurship (B.S.)

HISTORY

History (B.A.)

MATHEMATICS

Mathematics (B.S.)

MECHANICAL ENGINEERING

Mechanical Engineering (B.S.M.E.)

MODERN LANGUAGES

French (B.A.)

Spanish (B.A.)

MUSIC & FINE ARTS

Music (B.M.)

Music/Business (B.M.)

Music/Performing Arts (B.M.)

Music/Religion (B.M.)

PHILOSOPHY

Philosophy (B.A.)

PHYSICAL EDUCATION

Exercise Science (B.S.)

PHYSICS

Applied Physics (B.S.)

Applied Physics/Computer (B.S.)

POLITICAL SCIENCE

Political Science (B.A.)

PSYCHOLOGY

Psychology (B.A. or B.S.)

SOCIOLOGY

Sociology (B.A.)

PRE-PROFESSIONAL PROGRAMS

Pre-Dental

Pre-Health

Pre-Law

Pre-Theology

Pre-Veterinary

ATHLETIC FACILITIES

All 19 of Grove City College's intercollegiate varsity athletic teams utilize the College's superior facilities for competition, practices and off-season training and conditioning.

Grove City's athletic facilities have undergone numerous renovations and improvements in recent years, with more upgrades scheduled in the immediate future.

On lower campus, Robert E. Thorn Field is home to the College's football and track and field teams. The College installed CSTurf at Robert E. Thorn Field. CSTurf is a synthetic playing surface that features polyethylene LSR grass fibers and a rubber infill system.

The College also installed lights and resurfaced the 8-lane track around the field. Grove City also reconfigured its setup for track meets during these renovations.

In 2011, the College installed a new state-of-the-art scoreboard and new bleachers on the visitors' side at Thorn Field.

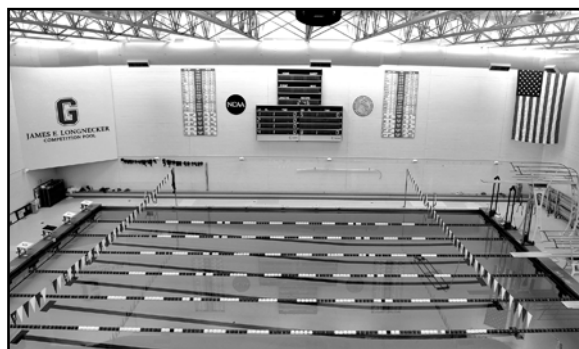
These upgrades benefit the entire campus community as the complex is used by both the College's club sports teams and its intramural program, along with the varsity teams.

The track is also available for use by recreational walkers and joggers. The complex also features 10 all-weather tennis courts next to the stadium.

Phillips Field House, located at the north end of the complex, features several locker rooms, an athletic training room, meeting rooms and coaches' offices. It is used by the football, track and tennis programs throughout the academic year.

The Physical Learning Center (PLC) houses the Grove City College Arena, home to the College's basketball and volleyball programs.

In summer 2012, the College renovated the Arena by installing new lighting and a new playing floor. In recent years, the Arena has also received new scoreboards and scorers' tables.



The James E. Longnecker Pool is one of the nation's premier small-college venues for both swimming and diving and water polo.



The home of Grove City's football and track and field teams, Robert E. Thorn Field has received numerous renovations in recent years.

In addition, the PLC features the James E. Longnecker Pool, one of the premier aquatic facilities in the region. Each year, Grove City hosts the Presidents' Athletic Conference Swimming and Diving Championships at the state-of-the-art facility.

In 2012, the College also hosted the Collegiate Water Polo Association Division III Championships at the James E. Longnecker Pool.

The PLC also features a second pool, the Recreational Pool, which is used by members of the College community year-round.

A fitness room featuring aerobic and Cybex equipment and a separate weight room with free and mechanized weights are also keystone areas of the facility.

The PLC also features six racquetball/handball courts as well as two adjacent intramural rooms. The intramural rooms each feature four basketball courts, four indoor tennis courts, four volleyball courts, an indoor track and two indoor jumping pits.

The College installed new synthetic flooring and several new electronic scoreboards throughout the intramural rooms.

The Physical Learning Center houses the athletic training room, locker rooms and offices for coaches and physical education faculty.

The College recently constructed a new office suite for coaches and athletic administration, while also incorporating its Athletic Hall of Fame area.

Grove City's outdoor athletic facilities have also received numerous upgrades in recent years.

The varsity soccer field, College Field, was expanded and re-sodded during the summer of 2005. College Field also received a new press box during the summer of 2007.

Meanwhile, Grove City's baseball and softball facilities recently received major facelifts as new dugouts, new fencing and electronic scoreboards were installed on both fields.



2012-13 SCHEDULE

NOV. 15	AT BAPTIST BIBLE	7:00	JAN. 16	AT WESTMINSTER*	6:00
NOV. 20	AT CARNEGIE MELLON	6:00	JAN. 19	THOMAS MORE*	1:00
NOV. 28	AT THOMAS MORE*	5:30	JAN. 23	WAYNESBURG*	6:00
DEC. 1	BETHANY*	1:00	JAN. 26	AT BETHANY*	2:00
DEC. 5	AT WAYNESBURG*	5:30	JAN. 30	CHATHAM*	6:00
DEC. 8	SAINT VINCENT*	1:00	FEB. 2	AT SAINT VINCENT*	4:00
DEC. 12	ALLEGHENY	6:00	FEB. 6	AT WASH. & JEFF.*	6:00
DEC. 28	MALONE	2:30	FEB. 9	GENEVA*	1:00
JAN. 2	AT CHATHAM*	6:00	FEB. 13	WESTMINSTER*	6:00
JAN. 5	AT GENEVA*	1:00	FEB. 16	AT THIEL*	1:00
JAN. 9	WASH. & JEFF.*	6:00	FEB. 19-23	PRESIDENTS' ATHLETIC CONFERENCE TOURNAMENT	
JAN. 12	THIEL*	1:00			

*-PRESIDENTS' ATHLETIC CONFERENCE GAME
HOME GAMES IN ALL CAPS