



2012 NCAA CHAMPIONSHIP TOURNAMENT QUALIFIER

**GROVE CITY COLLEGE
WOMEN'S SOCCER**

TABLE OF CONTENTS

QUICK FACTS

Institution _____ Grove City College
 Location _____ Grove City, Pa.
 Founded _____ 1876
 Enrollment _____ 2,500
 Colors _____ Crimson and White
 Nickname _____ Wolverines
 Affiliation _____ NCAA Division III
 Conference _____ Presidents' Athletic
 Home Field _____ College Field
 President _____ Richard Jewell, J.D.
 Alma Mater _____ Grove City, 1967
 Athletic Director _____ Dr. Don Lyle
 Alma Mater _____ Muskingum, 1971
 Associate A.D. _____ Susan Roberts
 Alma Mater _____ Ohio, 1975
 Compliance Coordinator _____ Mike Dreyes
 Alma Mater _____ Grove City, 1997
 Head Coach _____ Melissa Lamie
 Alma Mater _____ Calvin, 1992
 Career Record _____ 217-148-29 (19 yrs)
 At Grove City _____ Same
 First Year of Program _____ 1992
 All-Time Record _____ 220-157-29
 Head Trainer _____ Kay Mitchell Emigh
 Assistant Trainer _____ Rick Hawke
 Athletic Office Mgr _____ Kim Iliff
 Equipment Mgr _____ Larry Freeman
 Equipment Mgr _____ Jim Richardson

CONTACT INFORMATION

Head Coach Melissa Lamie

Office Telephone _____ 724-458-2128
 Best Time to Call _____ Mornings
 E-mail _____ mdlamie@gcc.edu

...

Sports Info. Director Ryan Briggs

Office Telephone _____ 724-458-3365
 Office Fax _____ 724-458-3855
 Home Telephone _____ 724-748-3718
 E-mail _____ rabriggs@gcc.edu

...

Grove City Athletic Department

Dept. Telephone _____ 724-458-2900
 Dept. Fax _____ 724-458-3855
 Web Site _____ www2.gcc.edu/sports

CREDITS

Editor _____ Ryan Briggs, SID
 Associate Editor _____ Robert Audia

Head shots by Gregg Studio, Grove City, Pa.

Action shots by Dave Miller/ADM Photography, Darlington, Pa.

Printing by SCP Group, Sharon, Pa.

HEAD COACH MELISSA LAMIE	3
ASSISTANT COACH STAN KEEHLWETTER	3
2013 SEASON PREVIEW	4-5
RETURNING LETTERWINNERS	6-9
SHANNON BISHOP (GROVE CITY, PA.)	6
LYDIA CAISSY (DEDHAM, MASS.)	6
SARAH CESSAR (SLIPPERY ROCK, PA.)	6
JULIE ECKENDORF (FAIRVIEW, PA.)	6
SARAH FLENNIKEN (HUDSON, OHIO)	7
JESSICA HECK (CANTON, MICH.)	7
NICOLE LAPIA (PITTSBURGH, PA.)	7
KRISTI LATHROP (FLEMINGTON, N.J.)	7
ABBY MATHES (CHARLOTTESVILLE, VA.)	8
BECKY McMANUS (BEL AIR, MD.)	8
HOLLY SPOFFORD (BROAD RUN, VA.)	8
CHELSEA TAROLLI (SYRACUSE, N.Y.)	9
KRISTIN THOMAS (ELLCOTT CITY, MD.)	9
SAM WEBER (FREEPORT, PA.)	10
MOLLY WEITZEL (PROSPECT, PA.)	10
JADE WELSH (BERWICK, PA.)	10
LEAH WILT (MOUNTVILLE, PA.)	10
TIFFANY YOST (CHRISTIANA, PA.)	11
NICOLE YOUNGS-STAHN (LIMERICK, PA.)	11
MADISON ZAJICEK (PITTSBURGH, PA.)	11
2012 IN REVIEW	12-13
ABOUT THE PRESIDENTS' ATHLETIC CONFERENCE	14
ALL-TIME ALL-CONFERENCE SELECTIONS	15
RECORD BOOK	16
POSTSEASON HISTORY	17
ALL-TIME RESULTS	18-19
GROVE CITY COLLEGE SPORTS	20-21
ABOUT GROVE CITY COLLEGE	22
GROVE CITY COLLEGE ATHLETIC FACILITIES	23
2013 SCHEDULE	24

HEAD COACH MELISSA LAMIE



Melissa Lamie enters her 21st season as Grove City College's women's soccer head coach. Since taking over prior to the 1993 season, Lamie has directed Grove City to 217 victories, five Presidents' Athletic Conference championships and three invitations to the NCAA Division III Championship Tournament.

Last year, Grove City finished 16-4-2 overall and advanced to the second round of the NCAA Championship Tournament for the first time in program history. She earned the conference's Coach of the Year award for her efforts.

In 2009, Lamie earned PAC Coach of the Year recognition after guiding the Wolverines to a 7-0 conference record and a berth in the ECAC Tournament. She owns a 217-148-29 (.588) career record in 20 seasons as head coach.

During the 2007 season, Lamie directed Grove City to a school-record 16 wins and the top seed in the Eastern College Athletic Conference Southern Championship Tournament. The 2001 squad posted the program's ninth double-digit victory total in 11 years by going 12-7-2 overall. The Wolverines advanced to the semifinals of the ECAC

Southern Championship Tournament. Grove City gave Lamie her 200th victory as women's soccer coach when the Wolverines downed Saint Vincent October 26, 2011.

Under Lamie's guidance, Grove City became the first PAC women's soccer team to go 10-0 against conference opponents during the 2003 season. The Wolverines capped the year by earning their second consecutive berth in the NCAA Division III Tournament with a 16-4-1 record. The next year, Grove City went 14-6-2 and won the PAC's regular season title with a 9-1 record. Lamie earned the conference's Coach of the Year award following the 2004 season.

In 2000, Grove City earned its first-ever postseason invitation by qualifying for the ECAC Mid-Atlantic Championship Tournament. Two years later, the Wolverines earned the program's first-ever NCAA Division III Tournament berth.

In both 2002 and 2003, former standout Meg Tilley received CoSIDA Academic All-America honors. In 2009, six Grove City players achieved CoSIDA Academic All-District honors.

A native of Denver, Lamie earned a bachelor of arts degree in physical education from Calvin College in Grand Rapids, Mich. in 1992. In 1993, she completed her master of arts degree in physical education from Northern Colorado University.

Lamie is also Grove City's head men's and women's golf coach. She directed the women's golf team to conference titles in both 2011 and 2013. Lamie also coached the women's basketball team at Grove City from 1992 to 2006 and is that program's all-time wins leader with 157.

She lives in Pine Township with her husband Steve, the College's head men's basketball coach, and their three children: Melia, 12, and twins Caleb Michael and Rayna Joy.

ASSISTANT STAN KEEHLWETTER



Dr. Stan Keehlwetter enters his 14th season as the assistant women's soccer coach at Grove City.

As an assistant at Grove City, Keehlwetter has helped Grove City capture two Presidents' Athletic Conference titles and eight postseason invitations.

Keehlwetter joined Grove City College on a full-time basis in 2004 as the Dean of Harbison Chapel. As Dean of Harbison Chapel, Keehlwetter works closely with student-led religious organizations on campus and also coordinates the College's Chapel program. He became Dean of the Chapel in 1999.

Keehlwetter also served as Grove City's head men's track and field coach from 2004 to 2008. Under his guidance, the Wolverines won four consecutive PAC titles (2005-2008). Over 50 track and field athletes qualified for the ECAC Championships in his five years as head men's track and field coach. In 2007, thrower Bob Perri earned All-America honors in the shot put at the NCAA Division III Championships. Keehlwetter currently serves as an assistant track coach at the College.

A graduate of Gordon College, where he was a three-year starter on the men's soccer team, Keehlwetter owns master's degrees from Duquesne and Gordon-Conwell Theological Seminary.

He earned his doctorate from Fuller Theological Seminary and lives in Wexford with his wife, Lois. They have three adult children.

2013 SEASON PREVIEW

Most intercollegiate women's soccer programs would be satisfied with a 16-win season that culminated with a trip to the second round of the NCAA Championship Tournament.

But as the 2013 season approaches for the Grove City College women's soccer program, those accomplishments from last year are merely a foundation for greater achievement this fall.

The Wolverines return nine starters and 11 other letterwinners in their quest for the Presidents' Athletic Conference title and a return trip to the national tournament.

Grove City will feature one of the largest senior classes in program history as nine players return for their final season.

Two of those fourth-year performers earned All-Great Lakes Region recognition last year - senior midfielder Sarah Cessar and senior forward Sam Weber.

Cessar earned First Team All-Region in 2012 and is expected to be a key contributor at both ends of the field.

Weber, meanwhile, earned Second Team All-Region after scoring a team-high 13 goals as a junior. She is Grove City's active career leading scorer with 24 goals.

Both players earned First Team All-PAC last year.



Senior forward Sam Weber is Grove City's active career leading scorer with 24 goals. She earned Second Team All-Great Lakes Region as a junior.



Senior center back Jessica Heck is a two-time All-Presidents' Athletic Conference selection.

Senior forward Shannon Bishop, Becky McManus and Chelsea Tarolli all return after strong 2012 seasons.

Tarolli ranked second on the team in goals, assists and points last year in her first season as a full-time starter.

Bishop scored four times and is a three-year letterwinner for the Wolverines while McManus also scored four times in her first season at Grove City.

Both Bishop and McManus will push for starting spots this year.

The senior class will also fortify Grove City's defense in 2013. At center back, senior Jessica Heck is a two-year starter and classmate Leah Wilt enters her fourth year as a starter.

They are joined at outside back by senior Lydia Caissy, another three-year starter.

All three played an integral role in Grove City's 11 shutouts last season.

In goal, senior Tiffany Yost will challenge for the full-time starting spot after serving as Grove City's primary goalkeeper in 2010 and 2011. She owns 19 career wins.

2013 SEASON PREVIEW

Six juniors also return for Grove City after having all earned two letters previously. Goalkeeper Kristi Lathrop earned 15 wins in goal last year while compiling an 0.82 goals-against average in 21 starts.

Outside back Molly Weitzel moved into the starting lineup as a sophomore and joined the three current seniors in forming one of the region's top defensive corps.

She will look to maintain her starting spot this fall.

Junior defender Nicole Youngs-Stahl will also battle for a starting spot after playing as a part-time starter in each of her first two seasons.

Junior Julie Eckendorf also returns at defender after playing as a reserve in 2011 and 2012.

Versatile junior Sarah Flenniken has 16 career starts at Grove City while playing a variety of positions over her first two seasons.

She will look to hold down a full-time starting spot again in 2013.

Junior midfielder Holly Spofford emerged as a stalwart in 2012, starting 21 matches. She will look to again be a major contributor both offensively and defensively this fall.

Five sophomores are also back after lettering in 2012. Midfielders Abby Mathes and Kristin Thomas each played in all 22 matches as rookies and will look to capture full-time starting spots this season.

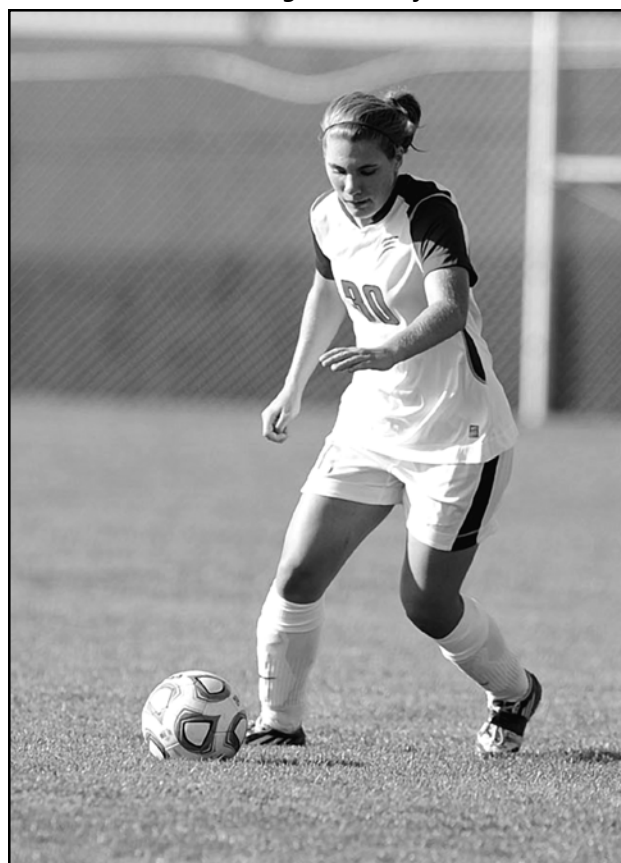
Midfielder Jade Welsh, defender Madi Zajicek and goalkeeper Nicole Lapia all saw duty as reserves in 2012 and will each battle for a spot in the lineup this fall.

Grove City opens the 2013 season August 30-31 by competing in the Gettysburg College Tournament.

The home schedule begins September 14 against Baldwin-Wallace while conference play starts October 4 against visiting Waynesburg.



Senior midfielder Sarah Cessar earned First Team All-Great Lakes Region and First Team All-Presidents' Athletic Conference recognition as a junior.



Senior defender Lydia Caissy enters her fourth season as a starter at outside back for Grove City.



Junior defender Molly Weitzel returns for her second season as a starter at outside back. She is a two-year letterwinner for the Wolverines.

RETURNING LETTERWINNERS



SHANNON BISHOP
 SENIOR • 5-4 • FORWARD
 GROVE CITY, PA.
 GROVE CITY

11

Three-year letterwinner who will compete for full-time starting spot at forward in 2013. **AS A JUNIOR:** Earned third letter ... Tied for fourth on team in goals ... Scored twice in win over Bethany September 29, 2012. **AS A SOPHOMORE:** Earned second letter ... Tied for third on team in goals and fourth in points ... Scored twice in final 10 minutes of 3-1 win over Saint Vincent October 26, 2011. **AS A FRESHMAN:** Appeared in 18 matches, earning first letter ... Named Presidents' Athletic Conference Player of the Week for October 11, 2010 ... Scored in ECAC Tournament win over Misericordia November 10. **NOTABLE:** Special education major ... Dean's List student ... Named to PAC Academic Honor Roll.

CAREER STATISTICS

Year	GP-GS	G	A	Pts.
2010	18-0	5	1	11
2011	20-6	4	1	9
2012	22-3	4	1	9
Totals	60-9	13	3	29




SARAH CESSAR
 SENIOR • 5-10 • MIDFIELDER
 SLIPPERY ROCK, PA.
 SLIPPERY ROCK

22

Two-year starter who will look to again be key contributor at both ends of the field ... Three-year letterwinner. **AS A JUNIOR:** Earned NSCAA First Team All-Great Lakes Region ... Named First Team All-Presidents' Athletic Conference ... Started 21 matches, earning third letter ... Scored game-winning goals in 1-0 wins at Waynesburg (October 5, 2012) and Saint Vincent (October 23, 2012). **AS A SOPHOMORE:** Started all 20 matches, earning second letter ... Named Second Team All-PAC ... Third on team in scoring. **AS A FRESHMAN:** Earned first letter ... Rebounded from early-season injury to play 10 matches during second half of 2010 ... Recorded goal and assist in win over Thiel October 13. **NOTABLE:** Biology/secondary education major ... Two-year letterwinner as distance runner for Grove City women's track and field team ... Owns school record in 3000-meter steeplechase.

CAREER STATISTICS

Year	GP-GS	G	A	Pts.
2010	10-0	3	1	7
2011	20-20	4	0	8
2012	21-21	4	4	12
Totals	51-41	11	5	27



LYDIA CAISSY
 SENIOR • 5-4 • DEFENDER
 DEDHAM, MASS.
 DEDHAM

30

Three-year starter and letterwinner at outside back ... CoSIDA Academic All-America candidate. **AS A JUNIOR:** Earned third letter ... CoSIDA Academic All-District honoree ... All-Presidents' Athletic Conference Honorable Mention ... PAC Defensive Player of the Week for October 29, 2012. **AS A SOPHOMORE:** Started all 20 matches, earning second letter ... Led team's defensive corps in scoring with two goals and five points ... Helped Grove City tally six shutouts. **AS A FRESHMAN:** Started 21 matches, earning first letter ... Helped Grove City record nine shutouts ... All-PAC Honorable Mention. **NOTABLE:** Accounting major ... Dean's List ... PAC Academic Honor Roll.

CAREER STATISTICS

Year	GP-GS	G	A	Pts.
2010	21-21	1	3	5
2011	20-20	2	1	5
2012	22-21	1	1	3
Totals	63-62	4	5	13



JULIE ECKENDORF
 JUNIOR • 5-5 • DEFENDER
 FAIRVIEW, PA.
 FAIRVIEW

21

Two-year letterwinner who will challenge for starting spot in 2013. **AS A SOPHOMORE:** Earned second letter ... Made first collegiate start and had two assists in win over Chatham October 16, 2012. **AS A FRESHMAN:** Earned first letter ... Played in five matches in 2011. **NOTABLE:** Elementary/special education major ... Sister Carolyn is a sophomore diver for Grove City women's swimming and diving team.

CAREER STATISTICS

Year	GP-GS	G	A	Pts.
2011	5-0	0	0	0
2012	8-1	0	2	2
Totals	13-1	0	2	2

RETURNING LETTERWINNERS

RETURNING LETTERWINNERS



SARAH FLENNIKEN
 JUNIOR • 5-6 • DEFENDER
 HUDSON, OHIO
 CUYAHOGA VALLEY CHRISTIAN

8

Two-year letterwinner who will look to reclaim full-time starting post in 2013. **AS A SOPHOMORE:** Earned second letter after appearing in 15 matches ... Recorded goal and assist in win over Chatham October 16, 2012. **AS A FRESHMAN:** Played in all 20 matches, earning first letter ... Tied for second on team in assists ... Made first of 16 starts at Case Western September 9, 2011. **NOTABLE:** English major ... Dean's List student ... Named to Presidents' Athletic Conference Academic Honor Roll.

CAREER STATISTICS					
Year	GP-GS	G	A	Pts.	
2011	20-16	0	3	3	
2012	15-1	1	1	3	
Totals	35-17	1	4	6	



JESSICA HECK
 SENIOR • 5-6 • DEFENDER
 CANTON, MICH.
 PLYMOUTH

19

Two-year starter and three-year letterwinner at center back ... CoSIDA Academic All-America candidate. **AS A JUNIOR:** Earned third letter ... CoSIDA Academic All-District First Team selection ... Second Team All-Presidents' Athletic Conference honoree ... Helped Wolverines post 11 shutouts in 2012 ... Earned conference's Defensive Player of the Week award for September 10, 2012. **AS A SOPHOMORE:** Started all 20 matches, earning second letter ... Second Team All-Conference ... Scored in win at Susquehanna October 22, 2011. **AS A FRESHMAN:** Played in 12 matches, earning first letter ... Made first start October 28, 2010 against Chatham. **NOTABLE:** Psychology major ... Dean's List student ... Named to PAC Academic Honor Roll.

CAREER STATISTICS					
Year	GP-GS	G	A	Pts.	
2010	12-1	0	0	0	
2011	20-20	1	2	4	
2012	21-20	0	0	0	
Totals	53-41	1	2	4	



NICOLE LAPIA
 SOPHOMORE • 5-2 • GOALKEEPER
 PITTSBURGH, PA.
 CHARTERS VALLEY

0

Second-year performer who will compete for time in goal this season ... Returning letterwinner. **AS A FRESHMAN:** Earned first letter ... Made collegiate debut September 29, 2012 against Bethany. **NOTABLE:** History/secondary education major.

CAREER STATISTICS					
Year	GP-GS	GA	Saves	Pct.	W-L-T
2012	3-0	0	1	1.000	0-0-0
Totals	3-0	0	1	1.000	0-0-0



KRISTI LATHROP
 JUNIOR • 5-7 • GOALKEEPER
 FLEMINGTON, N.J.
 HUNTERDON CENTRAL

00

Returning starter in goal for Grove City ... CoSIDA Academic All-America candidate ... Two-year letterwinner. **AS A SOPHOMORE:** Earned full-time starting assignment in goal ... Named Second Team All-Presidents' Athletic Conference ... Posted seven shutouts and 0.82 goals-against average ... PAC Defensive Player of the Week for September 3, 2012. **AS A FRESHMAN:** Earned first letter ... Posted 4-0-0 record and 0.63 goals-against average in 2011 ... Earned first win September 7, 2011 against Heidelberg. **NOTABLE:** Mechanical engineering major ... Dean's List student ... Named to Presidents' Athletic Conference Academic Honor Roll.

CAREER STATISTICS					
Year	GP-GS	GA	Saves	Pct.	W-L-T
2011	6-2	2	12	.857	4-0-0
2012	21-21	16	74	.822	15-4-2
Totals	27-23	18	86	.827	19-4-2

RETURNING LETTERWINNERS

RETURNING LETTERWINNERS



**ABBY
MATHES**
SOPHOMORE • 5-6 • MIDFIELDER
CHARLOTTESVILLE, VA.
ALBEMARLE

18

Returning letterwinner who will contend for full-time starting assignment in 2013. **AS A FRESHMAN:** Earned first letter after playing in all 22 matches ... Made first collegiate start September 8, 2012 at John Carroll ... Scored game-winning goal in 1-0 win at Baldwin-Wallace September 15 ... Started NCAA Tournament match at Messiah November 11. **NOTABLE:** Biology major ... Dean's List student ... Named to Presidents' Athletic Conference Academic Honor Roll ... Brother Jonathan is sophomore midfielder for Grove City men's soccer team.

CAREER STATISTICS				
Year	GP-GS	G	A	Pts.
2012	22-3	4	0	8
Totals	22-3	4	0	8



**BECKY
McMANUS**
SENIOR • 5-3 • FORWARD
BEL AIR, MD.
HARFORD CHRISTIAN

12

Returning letterwinner who will challenge for starting spot in 2013. **AS A JUNIOR:** Appeared in all 22 matches in first season at Grove City ... Earned first letter ... Scored game-winning goal in 2-1 win over Rochester Institute of Technology September 7, 2012 ... Scored twice against Chatham October 16 ... Made first start of season against Chatham. **NOTABLE:** Biology major.

CAREER STATISTICS				
Year	GP-GS	G	A	Pts.
2012	22-1	4	0	8
Totals	22-1	4	0	8



Junior midfielder Holly Spofford started 21 matches in 2012 for Grove City. She is one of the Wolverines' nine returning starters.



**HOLLY
SPOFFORD**
JUNIOR • 5-7 • MIDFIELDER
BROAD RUN, VA.
HOMESCHOOLED

14

Returning starter and two-year letterwinner at midfielder for Grove City ... CoSIDA Academic All-America candidate. **AS A SOPHOMORE:** Earned full-time starting assignment ... Captured second letter ... Assisted on game-winning goal in 1-0 win at Baldwin-Wallace September 15, 2012. **AS A FRESHMAN:** Earned first letter after appearing in 14 matches as a reserve ... Made collegiate debut at D'Youville September 2, 2011. **NOTABLE:** English major ... Dean's List student ... Named to Presidents' Athletic Conference Academic Honor Roll.

CAREER STATISTICS				
Year	GP-GS	G	A	Pts.
2011	14-0	0	0	0
2012	22-21	2	1	5
Totals	36-21	2	1	5

RETURNING LETTERWINNERS

RETURNING LETTERWINNERS



**CHELSEA
TAROLLI**
SENIOR • 5-3 • FORWARD
SYRACUSE, N.Y.
MARCELLUS

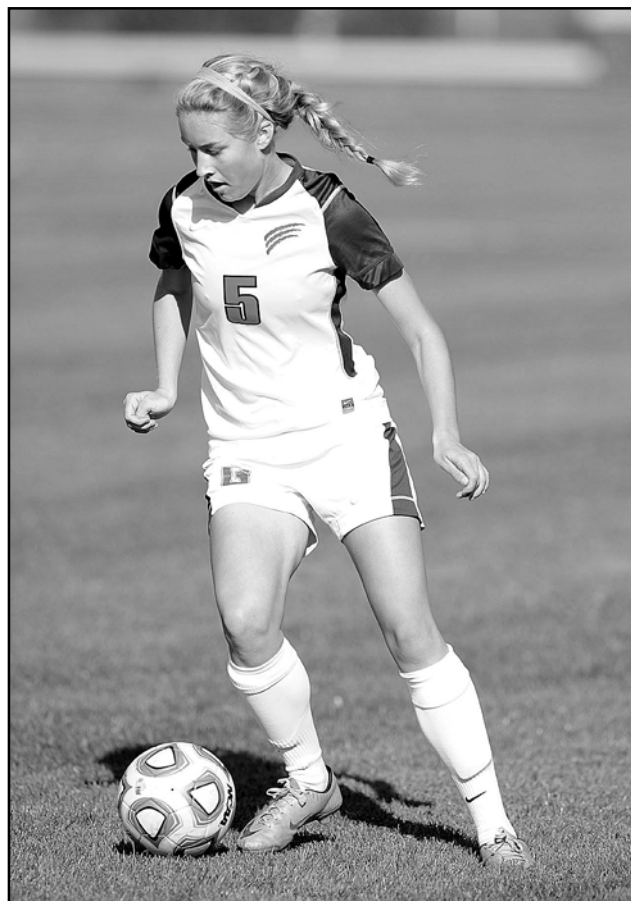
9

Three-year letterwinner and returning starter at forward for Grove City. **AS A JUNIOR:** Ranked second on team in goals, assists and points, earning third letter ... Assisted game-winning overtime goal in NCAA Tournament opener against Western Connecticut State November 10, 2012. **AS A SOPHOMORE:** Played in all 20 matches, earning second letter ... Emerged as one of Grove City's top offensive threats, finishing second on team in assists and fourth in points ... Made first collegiate start September 14, 2011 at Allegheny. **AS A FRESHMAN:** Earned first letter after playing in 11 matches as a reserve ... Scored first career goal in win over Thiel October 13, 2010. **NOTABLE:** English major ... Dean's List student.

CAREER STATISTICS				
Year	GP-GS	G	A	Pts.
2010	11-0	1	0	2
2011	20-3	3	3	9
2012	22-20	5	5	15
Totals	53-23	9	8	26



Senior forward Chelsea Tarolli scored five times in 2012 and also assisted on five goals. She is a returning starter up front for the Wolverines.



Sophomore Kristin Thomas played in all 22 matches for Grove City during the 2012 season. She is a returning letterwinner at midfielder.



**KRISTIN
THOMAS**
SOPHOMORE • 5-7 • MIDFIELDER
ELLCOTT CITY, MD.
CHAPELGATE CHRISTIAN

5

Returning letterwinner at midfielder who will compete for starting spot in 2013. **AS A FRESHMAN:** Earned first letter after playing in all 22 matches in 2012 ... Recorded assist in 3-1 win at Heidelberg September 1 ... Made first start October 16 against Chatham. **NOTABLE:** Biology major ... Dean's List student ... Named to Presidents' Athletic Conference Academic Honor Roll.

CAREER STATISTICS				
Year	GP-GS	G	A	Pts.
2012	22-1	1	3	5
Totals	22-1	1	3	5

RETURNING LETTERWINNERS



SAM WEBER
 SENIOR • 5-6 • FORWARD
 FREEPORT, PA.
 FREEPORT

2

Two-year starter and three-year letterwinner at forward ... Will likely again be key source of offense in 2013. **AS A JUNIOR:** Earned Second Team NSCAA All-Great Lakes Region ... First Team All-Presidents' Athletic Conference ... Led team in goals and points ... Scored game-winning goal in 1-0 overtime win over Western Connecticut State in NCAA Tournament November 10, 2012. **AS A SOPHOMORE:** Played in all 20 matches, earning second letter ... Led team in scoring with seven goals ... Ranked second on team with 15 points. **AS A FRESHMAN:** Saw action in 14 matches, earning first letter ... Recorded goal and assist in first collegiate start October 28, 2010 against Chatham ... Scored twice in win at Saint Vincent October 22. **NOTABLE:** English major.

CAREER STATISTICS				
Year	GP-GS	G	A	Pts.
2010	14-2	4	2	10
2011	20-9	7	1	15
2012	20-19	13	4	30
Totals	54-30	24	7	55



JADE WELSH
 SOPHOMORE • 5-4 • MIDFIELDER
 BERWICK, PA.
 BERWICK

3

Returning letterwinner who will look to break into lineup at midfielder this fall. **AS A FRESHMAN:** Played in five matches, earning first letter ... Scored first collegiate goal in win over Bethany September 29, 2012. **NOTABLE:** Psychology major.

CAREER STATISTICS				
Year	GP-GS	G	A	Pts.
2012	5-0	1	0	2
Totals	5-0	1	0	2



LEAH WILT
 SENIOR • 5-7 • DEFENDER
 MOUNTVILLE, PA.
 HEMPFIELD

29

Three-year starter and letterwinner at center back for Grove City. **AS A JUNIOR:** Started 21 matches, earning third letter ... Earned All-Presidents' Athletic Conference Honorable Mention ... Recorded assist at Heidelberg September 1, 2012 ... Helped Grove City record 11 shut-outs. **AS A SOPHOMORE:** Earned second letter after starting 19 matches ... Scored first collegiate goal September 7, 2011 in win over Heidelberg. **AS A FRESHMAN:** Played in 21 matches, earning first letter ... Helped Grove City post nine shutout victories ... Made first start September 15, 2010 against Allegheny. **NOTABLE:** Mathematics/secondary education major.

CAREER STATISTICS				
Year	GP-GS	G	A	Pts.
2010	21-16	0	0	0
2011	20-19	1	0	2
2012	22-21	0	1	1
Totals	63-56	1	1	3




MOLLY WETZEL
 JUNIOR • 5-5 • DEFENDER
 PROSPECT, PA.
 SLIPPERY ROCK

7

Returning starter at outside back for Grove City ... Two-year letterwinner. **AS A SOPHOMORE:** Started final 19 matches of 2012 season, earning second letter ... Recorded assist against Thomas More October 3, 2012. **AS A FRESHMAN:** Appeared in seven matches, earning first letter ... Made first collegiate start at Bethany October 1, 2011. **NOTABLE:** Mathematics/secondary education major ... Dean's List ... Earned Grove City "Scholar Athlete" award.

CAREER STATISTICS				
Year	GP-GS	G	A	Pts.
2011	7-1	0	0	0
2012	22-19	0	1	1
Totals	29-20	0	1	1

RETURNING LETTERWINNERS



**TIFFANY
YOST**
SENIOR • 5-4 • GOALKEEPER
CHRISTIANA, PA.
LIVING WORD ACADEMY

1

Three-year letterwinner ... Will look to reclaim starting spot in goal this fall. **AS A JUNIOR:** Earned third letter ... Compiled 0.41 goals-against average ... Made first start of season October 16, 2012 against Chatham. **AS A SOPHOMORE:** Started 18 matches in goal, earning second letter ... Led team in victories ... Posted 1.27 goals-against average. **AS A FRESHMAN:** Started all 21 matches in goal, earning first collegiate letter ... Led Presidents' Athletic Conference in wins and shutouts ... Recorded 0.95 goals-against average. **NOTABLE:** Exercise science major ... Dean's List student ... Named to PAC Academic Honor Roll.

CAREER STATISTICS

Year	GP-GS	GA	Saves	Pct.	W-L-T
2010	21-21	20	94	.825	12-8-1
2011	19-18	22	68	.756	6-7-2
2012	5-1	1	3	.750	1-0-0
Totals	45-40	43	165	.793	19-15-3



Senior Tiffany Yost is a three-year letterwinner in goal for Grove City. She led the Presidents' Athletic Conference in wins and shutouts in 2010.



**NICOLE
YOUNGS-STAHL**
JUNIOR • 5-5 • DEFENDER
LIMERICK, PA.
SPRING FORD

24

Two-year letterwinner who will look to secure full-time starting spot at defender. **AS A SOPHOMORE:** Earned second letter ... Started first three matches of season ... Scored game-winning goal in 2-1 conference tournament victory over Washington & Jefferson October 31, 2012. **AS A FRESHMAN:** Started first two matches of 2011 season before being sidelined by injury ... Made collegiate debut September 2 against D'Youville. **NOTABLE:** Elementary/special education major.

CAREER STATISTICS

Year	GP-GS	G	A	Pts.
2011	2-2	0	0	0
2012	17-4	1	2	4
Totals	19-6	1	2	4



**MADISON
ZAJICEK**
SOPHOMORE • 5-5 • DEFENDER
PITTSBURGH, PA.
CHARTIERS VALLEY

13

One-year letterwinner ... Will compete for starting spot at defender this season. **AS A FRESHMAN:** Earned first letter ... Made collegiate debut September 1, 2012 at Heidelberg ... Made first start October 16 against Chatham. **NOTABLE:** Exercise science major ... Also member of Grove City College women's basketball team.

CAREER STATISTICS

Year	GP-GS	G	A	Pts.
2012	6-1	0	0	0
Totals	6-1	0	0	0

RETURNING LETTERWINNERS

2012 IN REVIEW

To say that highlights filled the 2012 season of the Grove City College women's soccer program would be a tremendous understatement.

From preseason camp in mid-August through Veterans Day weekend in November, the Wolverines assembled one of the finest and most memorable seasons in program history.

Grove City posted a 15-3-2 record during the regular season and earned the program's third all-time NCAA Division III Championship Tournament invitation.

The Wolverines then secured their first-ever NCAA Tournament win by edging Western Connecticut State in overtime, 1-0, in the opening round of the tournament November 10.

Overall, the Wolverines' 16 victories in 2012 tied the program's single-season record.

Grove City achieved its 16-4-2 overall mark while playing one of the nation's toughest schedules. Five of Grove City regular-season opponents qualified for the NCAA Tournament and several other foes spent time in the regional rankings.

Head coach Melissa Lamie earned Presidents' Athletic Conference Coach of the Year following the season.

Numerous Grove City players earned postseason honors in recognition of their respective play throughout 2012.



Senior midfielder Grace Rieman led Grove City with six assists in 2012 and earned First Team All-PAC honors.



Sophomore goalkeeper Kristi Lathrop tied a school record with 15 victories in 2012.

Junior midfielder Sarah Cessar earned First Team All-Great Lakes Region from the National Soccer Coaches Association of America while junior forward Sam Weber captured Second Team All-Great Lakes honors.

Cessar, Weber and senior midfielder Grace Rieman all merited First Team All-Conference recognition from the league's head coaches.

Junior defender Jessica Heck and sophomore goalkeeper Kristi Lathrop both earned Second Team All-PAC distinction.

Meanwhile, junior defenders Lydia Caissy and Leah Wilt each received All-PAC Honorable Mention. Caissy and Heck also earned First Team Capital One/CoSIDA Academic All-District distinction.

Twenty-three different players started at least one match and 15 players scored at least once during the season.

Defensively, the Wolverines recorded an 0.74 goals-against average and 11 shutouts. Lathrop tied a program record with 15 victories in goal.

Weber led Grove City with 13 goals while Rieman paced the team with six assists.

Junior Chelsea Tarolli ranked second in each category with five goals and five assists. Her 15 points ranked second to Weber's 30.

Grove City also went the entire season without receiving a card and again earned the NSCAA's Gold Ethics Award for that accomplishment.

2012 IN REVIEW

2012 STATISTICS

Name	GP-GS	G	A	Pts.	GW
Sam Weber	20-19	13	4	30	4
Chelsea Tarolli	22-20	5	5	15	2
Sarah Cessar	21-21	4	4	12	2
Grace Rieman	20-20	3	6	12	0
Bethany Kolodziej	20-19	5	1	11	2
Shannon Bishop	22-3	4	1	9	0
Abby Mathes	22-3	4	0	8	2
Becky McManus	22-1	4	0	8	1
Holly Spofford	22-21	2	1	5	1
Kristin Thomas	22-1	1	3	5	0
Nikki Youngs-Stahl	17-4	1	2	4	1
Lydia Caissy	22-21	1	1	3	0
Sarah Flenniken	15-1	1	1	3	0
Micaela Velloney	5-0	1	0	2	0
Jade Welsh	5-0	1	0	2	0
Julie Eckendorf	8-1	0	2	2	0
Molly Weitzel	22-19	0	1	1	0
Leah Wilt	22-21	0	1	1	0
Jessica Heck	21-20	0	0	0	0
Julie Apple	10-2	0	0	0	0
Megan Johnson	16-0	0	0	0	0
Madison Zajicek	6-1	0	0	0	0
Michaela Carter	3-1	0	0	0	0
Sarah Peachey	3-1	0	0	0	0
Totals	22	51	33	135	16
Opponents	22	17	17	51	4

	GP-GS	Min	GA	Avg	Saves
Nicole Lapia	3-0	81:15	0	0.00	1
Tiffany Yost	5-1	220:45	1	0.41	3
Kristi Lathrop	21-21	1752:27	16	0.82	74
Totals	22	2054:27	17	0.74	78
Opponents	22	2054:27	51	2.23	149



Senior Bethany Kolodziej tied for second on the team with a career-high five goals in 2012.

2012 RESULTS

Date	Opponent	Result	Score	Record
Aug. 31	Ohio Northern	T	1-1 (2 OT)	0-0-1
Sept. 1	Heidelberg	W	3-1	1-0-1
Sept. 7	Rochester Tech.	W	2-1	2-0-1
Sept. 8	John Carroll	W	2-1 (2 OT)	3-0-1
Sept. 13	ALLEGHENY	W	2-0	4-0-1
Sept. 15	Baldwin-Wallace	W	1-0 (OT)	5-0-1
Sept. 17	Mount Union	W	2-1 (OT)	6-0-1
Sept. 20	PSU BEHREND	W	2-1	7-0-1
Sept. 29	BETHANY*	W	11-0	8-0-1
Oct. 3	THOMAS MORE*	L	2-1	8-1-1
Oct. 5	Waynesburg*	W	1-0	9-1-1
Oct. 10	THIEL*	W	4-0	10-1-1
Oct. 13	Wash. & Jeff.*	L	2-1 (OT)	10-2-1
Oct. 16	CHATHAM*	W	4-0	11-2-1
Oct. 18	CARNEGIE MELL.	L	3-1	11-3-1
Oct. 20	Geneva*	W	4-0	12-3-1
Oct. 23	Saint Vincent*	W	1-0	13-3-1
Oct. 27	WESTMINSTER*	W	4-0	14-3-1
Oct. 31	WASH. & JEFF.%	W	2-1	15-3-1
Nov. 3	Thomas More%	T	0-0 (2 OT)	15-3-2
Nov. 10	W. Conn. St.\$	W	1-0 (OT)	16-3-2
Nov. 11	Messiah\$	L	3-0	16-4-2

*-Presidents' Athletic Conference Match
 %-Presidents' Athletic Conference Tournament
 \$-NCAA Tournament at Grantham, Pa.
 Home Matches in CAPS



Junior Sarah Cessar earned First Team All-Region and First Team All-PAC honors following the 2012 season.

ABOUT THE PAC

Founded in 1955, the Presidents' Athletic Conference continues its mission of promoting intercollegiate athletics and the pursuit of academic excellence.

Comprised of 10 select private colleges and universities - Bethany College, Chatham University, Geneva College, Grove City College, Saint Vincent College, Thiel College, Thomas More College, Washington & Jefferson College, Waynesburg University and Westminster College - the PAC remains a unique organization in this day of high-pressure intercollegiate athletics.

With academics at the center of each member's philosophy, the PAC is built on the principle that an athletic program is a part of college life, but not an entity in itself.

During the 2005-06 academic year, Chatham, Geneva and Saint Vincent all joined the PAC. Chatham competed for PAC championships for the first time during the 2007-08 academic year.

Saint Vincent first competed for conference titles in 2010-11.

Geneva became eligible for conference titles in 2011-12.

The PAC annually crowns champions in 19 sports. All-Conference status is awarded in all 19 sports. Head coaches select all-league squads for all team sports, while in individual sports such as cross country and tennis, all-PAC accolades are based upon performances at the conference championships.

The PAC annually awards its men's and women's All-Sports Trophies to the schools which perform best across the board in conference competition.

Grove City won the Women's All-Sports Trophy for the 2012-13 academic year while Washington & Jefferson earned the Men's All-Sports Trophy.

In 2012-13, the league named a conference-record 853 student-athletes to the PAC Academic Honor Roll, which recognizes all participating student-athletes who attain a term grade-point average of 3.60 or above during their semester of competition.

2012 Standings

	Conference			Overall		
	W	L	T	W	L	T
Thomas More*	9	0	0	20	1	1
Grove City	7	2	0	16	4	2
Wash. & Jeff.	6	2	1	10	8	1
Waynesburg	5	3	1	9	9	1
Geneva	5	4	0	9	9	1
Saint Vincent	4	5	0	11	7	0
Westminster	2	4	3	7	8	5
Bethany	2	6	1	3	12	2
Thiel	2	7	0	5	11	1
Chatham	0	9	0	2	13	0

*-PAC Tournament Champion

2012 PAC Statistical Leaders

Goals:	Heidi Mann, Geneva	18
Assists:	L. Wietmarschen, Thomas More	16
Points:	L. Wietmarschen, Thomas More	40
Wins:	Abby McBride, Thomas More	20
GAA:	Abby McBride, Thomas More	0.20
Save Pct:	Abby McBride, Thomas More	.938
Shutouts:	Abby McBride, Thomas More	10

2012 ALL-PRESIDENTS' ATHLETIC CONFERENCE TEAMS

FIRST TEAM

Pos.	Name	School
GK	Abby McBride	Thomas More
M	SARAH CESSAR	GROVE CITY
M	Heidi Mann	Geneva
M	GRACE RIEMAN	GROVE CITY
M	Chrissy Sonderman	Thomas More
M	Chrissy Marcus	Wash. & Jeff.
F	Holly Shipley	Wash. & Jeff.
F	SAM WEBER	GROVE CITY
F	Lauren Wietmarschen	Thomas More
D	Elly Colvin	Saint Vincent
D	Abby Gindling	Thomas More

SECOND TEAM

Pos.	Name	School
GK	KRISTI LATHROP	GROVE CITY
M	Krista Edwards	Westminster
M	Suzie Godwin	Waynesburg
M	Elise Mann	Geneva
M	Jordan Steele	Westminster
F	Courtney Clark	Thomas More
F	Olivia Huber	Thomas More
F	Julie Lindenfelser	Bethany
D	Taylor Bombalski	Waynesburg
D	JESSICA HECK	GROVE CITY
D	Hannah Shaner	Wash. & Jeff.

2012 PAC PLAYER OF THE YEAR: Abby Gindling, Thomas More

2012 PAC COACH OF THE YEAR: MELISSA LAMIE, GROVE CITY COLLEGE

ALL-TIME ALL-PAC SELECTIONS

1993	Name Abby Anderson Susan Lakatos Colleen Rowe Karyn Buhler Katie O'Neil	Honor First Team First Team First Team Second Team Second Team	Katy Turman Nanmarie Woodford Jen Bailey Autum Early	First Team First Team Second Team Second Team	2006	Name Diana Prangel Maia Siber Stephanie Wild Hannah Yang	Honor First Team First Team First Team First Team	
1994	Name Abby Anderson Susan Lakatos Ellen Lord Colleen Rowe Amy Davis Katie O'Neil Jody Swauger-Simms	Honor First Team First Team First Team First Team Second Team Second Team Second Team	2000	Name Kathy Keehlwetter Erica Snow Meg Tilley Katy Turman Nanmarie Woodford Danielle Balliet Lindsey Cuffe Karen Reefer	Honor First Team First Team First Team First Team Second Team Second Team Second Team	2007	Name Kristin Colley Emily Ostlund Stephanie Wild Elise Bender	Honor First Team First Team First Team Second Team
1995	Name Abby Anderson Susan Lakatos Ellen Lord Colleen Rowe Jody Swauger-Simms Lis Waldron Laura Gullberg Ashley McLaughlin	Honor First Team First Team First Team First Team First Team First Team Second Team Second Team	2001	Name Danielle Balliet Kathy Keehlwetter Michelle Novosel Meg Tilley Katy Turman Lindsey Cuffe Jennifer Duly	Honor First Team First Team First Team First Team Second Team Second Team	2008	Name Kristin Colley Stephanie Wild Emily Ostlund Diana Prangel Laura Shipley	Honor First Team First Team Second Team Second Team Second Team
1996	Name Abby Anderson Laura Gullberg Susan Lakatos Erin Price Jody Swauger-Simms Jen Howard Johanna Knight Michelle Maegle	Honor First Team First Team First Team First Team First Team Second Team Second Team Second Team	2002	Name Danielle Balliet Karen Reefer Meg Tilley Autumn Hubbard Kate Klingensmith Michelle Novosel Katy Turman	Honor First Team First Team First Team Second Team Second Team Second Team Second Team	2009	Name Emily Ostlund Michelle Peck Elise Bender Hannah Yang	Honor First Team First Team Second Team Second Team
1997	Name Jody Swauger-Simms Rebecca Brooks Autum Early Laura Gullberg Johanna Knight Michelle Maegle	Honor First Team Second Team Second Team Second Team Second Team Second Team	2003	Name Danielle Balliet Kate Klingensmith Michelle Novosel Meg Tilley Autumn Hubbard Diane Metzger	Honor First Team First Team First Team First Team Second Team Second Team	2010	Name Emily Ostlund Hannah Yang Emily Hurley Grace Rieman	Honor First Team First Team Second Team Second Team
1998	Name Michelle Maegle Erica Snow Autum Early Kathy Keehlwetter Nanmarie Woodford	Honor First Team First Team Second Team Second Team Second Team	2004	Name Kate Klingensmith Michelle Novosel Maia Siber Stacey Brubaker Autumn Hubbard Kori Koper Leah Partridge	Honor First Team First Team First Team Second Team Second Team Second Team Second Team	2011	Name Grace Rieman Sarah Cessar Jessica Heck	Honor First Team Second Team Second Team
1999	Name Kathy Keehlwetter Erica Snow	Honor First Team First Team	2005	Name Kate Klingensmith Kristin Hummel Stacey Brubaker Laura Shipley	Honor First Team First Team Second Team Second Team	2012	Name Sarah Cessar Grace Rieman Sam Weber Jessica Heck Kristi Lathrop	Honor First Team First Team First Team Second Team Second Team

**PRESIDENTS' ATHLETIC CONFERENCE
WOMEN'S SOCCER
MOST VALUABLE PLAYER**

Year	Player
1997	Jody Swauger-Simms
2001	Kathy Keehlwetter
2003	Meg Tilley
2004	Kate Klingensmith
2009	Michelle Peck
2010	Hannah Yang

RECORD BOOK

TEAM

Most Goals, Match: 14, (Oct 30, 2010 vs. Chatham)
Most Goals, Season: 75 (2010)
Most Assists, Match: 9, Sept. 4, 2002 vs. La Roche (8-1)
Most Assists, Season: 59 (2002)
Largest Margin of Victory: 14 goals (vs. Chatham, 2010)
Most Shutouts, Season: 11 (2007)
Longest Shutout Streak: 6, (Oct. 4-Oct. 23, 2004)
Most Victories, Season: 16 (2003, 2007, 2012)
Best Winning Percentage: .786, 2007 (16-4-1)
Longest Win Streak: 15, (Sept. 20-Nov. 8, 2003)
Longest Unbeaten Streak: 15, (Sept. 20-Nov. 8, 2003)
Most Ties, Season: 3 (2005, 2009)
Most Losses, Season: 14 (1998)
Longest Losing Streak: 5, (Sept. 4-15, 1998)
Most Matches, Season: 22, (2002, 2003, 2004, 2012)

INDIVIDUAL SEASON LEADERS

Year	Goals	Assists
1992	Colleen Rowe, 9	
1993	Colleen Rowe, 13	Susan Lakatos, 6
1994	Abby Anderson, 17	Colleen Rowe, 7
1995	Abby Anderson, 11	Colleen Rowe, 8
1996	Abby Anderson, 15	Susan Lakatos, 9
1997	J. Swauger-Simms, 11	Johanna Knight, 5
1998	Adrienne Hill, 5	Conroy/Franklin, 3
1999	Erica Snow, 10	Erica Snow, 6
2000	Meg Tilley, 15	Meg Tilley, 11
2001	Michelle Novosel, 14	Lindsey Cuffe, 9
2002	Meg Tilley, 25	Meg Tilley, 9
2003	Meg Tilley, 17	Michelle Novosel, 13
2004	Stacey Brubaker, 14	Kate Klingensmith, 14
2005	Kate Klingensmith, 8	Stacey Brubaker, 6
2006	Stephanie Wild, 9	Michelle Peck, 5
2007	Emily Ostlund, 15	Elise Bender, 6
2008	Wild/Yang, 9	Bender/Wild 4
2009	Michelle Peck, 10	Elise Bender, 7
2010	Hannah Yang, 18	Grace Rieman, 12
2011	Sam Weber, 7	Grace Rieman, 4
2012	Sam Weber, 13	Grace Rieman, 6



Meg Tilley is Grove City's all-time leading scorer with 68 career goals. She is a two-time CoSIDA Academic All-American.

INDIVIDUAL - CAREER

Career Goals: 68, Meg Tilley (2000-03)
 52, Abby Anderson (1993-96)
 49, Michelle Novosel (2001-04)
Career Assists: 35, Meg Tilley (2000-03)
 27, Michelle Novosel (2001-04)
 26, Kate Klingensmith (2002-05)
Career Points: 171, Meg Tilley (2000-03)
 125, Michelle Novosel (2001-04)
 123, Abby Anderson (1993-96)
Wins In Goal: 34, Katy Turman (1999-2002)

INDIVIDUAL - SEASON

Season Goals: 25, Meg Tilley, 2002
 18, Hannah Yang, 2010
 17, A. Anderson, 1994/M. Tilley, 2003
Season Assists: 14, Kate Klingensmith, 2004
 13, Michelle Novosel, 2003
 12, Grace Rieman, 2010
Season Points: 59, Meg Tilley, 2002
 41, Meg Tilley, 2003
 40, Abby Anderson, 1994
Wins In Goal: 15, Lindsay Thompson, 2003
 15, Kristi Lathrop, 2012

INDIVIDUAL - GAME

Goals: 3, numerous times
Assists: 5, Kate Klingensmith (Oct. 30, 2004 vs. Thiel)
Points: 8, Lyndsay Younkins (Sept. 2, 1998, vs. Hiram); Michelle Novosel (Sept. 4, 2002, vs. La Roche)

YEAR-BY-YEAR RECORDS

Year	W-L-T	Notes
1992	3-9-1	1st year of program
1993	9-6-0	1st winning season
1994	7-9-0	
1995	9-7-1	PAC Champions
1996	11-6-0	PAC Champions
1997	8-7-2	PAC Champions
1998	5-14-1	
1999	8-10-1	
2000	14-6-0	PAC Champs/ECAC
2001	12-7-2	PAC Champions
2002	13-7-2	NCAA Tournament
2003	16-5-1	NCAA Tournament
2004	14-6-2	
2005	6-12-3	
2006	9-7-2	
2007	16-4-1	ECAC Top Seed
2008	11-8-2	
2009	11-7-3	ECAC Tournament
2010	12-8-1	ECAC Semifinals
2011	10-8-2	ECAC Tournament
2012	16-4-2	NCAA Tournament
TOTAL	220-157-29	

POSTSEASON HISTORY

The Grove City College women's soccer program has qualified for postseason play eight times in the last 13 seasons. Here is a look back at those postseason matches.

2000 ECAC Mid-Atlantic Tournament Quarterfinals

**No. 3 Grove City at No. 6 Lebanon Valley
Annville, Pa. -- November 1, 2000**

Grove City made its first-ever appearance in postseason play by visiting Lebanon Valley in the ECAC quarterfinals. Lebanon Valley jumped out to a 2-0 lead in the second half before Nanmarie Woodford scored in the 84th minute for the Wolverines (14-6).

Grove City	0	1	1
Lebanon Valley	0	2	2

2002 NCAA Tournament First Round

**Grove City at Nazareth
Rochester, N.Y. -- November 13, 2002**

The Wolverines (13-7-2) nearly rallied from a pair of two-goal deficits before falling to Nazareth in Grove City's first-ever NCAA Tournament match. Junior Meg Tilley scored twice for the Wolverines.

Grove City	1	1	2
Nazareth	2	1	3

2003 NCAA Tournament First Round

**Grove City at Ithaca
Ithaca, N.Y. -- November 12, 2003**

Host Ithaca scored twice in the first 12 minutes and held off Grove City (16-5-1) in the opening round of the NCAA Tournament.

Grove City	0	0	0
Ithaca	2	0	2

2007 ECAC Southern Tournament Quarterfinals

**No. 8 Juniata at No. 1 Grove City
Grove City, Pa. -- November 7, 2007**

Grove City hosted its first-ever postseason match after earning the top seed in the ECAC Tournament. The Wolverines fell behind early but took a 2-1 lead on first-half goals from Bethany Peck and Stephanie Wild. Grove City then pushed its lead to 3-1 in the 83rd minute on a goal from Michelle Peck.

Juniata	1	1	2
Grove City	2	1	3

2007 ECAC Southern Tournament Semifinals

**No. 5 Catholic at No. 1 Grove City
Grove City, Pa. -- November 10, 2007**

Visiting Catholic scored with just 13 minutes remaining in regulation to pull out a 1-0 win over Grove City. Goalkeeper Diana Prangel stopped seven shots for Grove City, which finished with a 16-4-1 record.

Catholic	0	1	1
Grove City	0	0	0

2009 ECAC Southern Tournament Quarterfinals

**No. 5 Grove City at No. 4 Penn State Behrend
Erie, Pa. -- November 11, 2009**

Grove City (11-7-3) erased an early 1-0 hole but a second surge fell just short in the ECAC quarterfinals at Gannon. Grace Rieman put Grove City on the board in the 20th minute with her seventh goal of the season.

Grove City	1	0	1
PSU Behrend	2	0	2

2010 ECAC Southern Tournament Quarterfinals

**No. 7 Misericordia at No. 2 Grove City
Grove City, Pa. -- November 10, 2010**

Five second-half goals helped lift host Grove City (12-7-1) to victory against Misericordia. Grace Rieman scored twice in a seven-minute span while Shannon Bishop, Sarah Cessar and Hannah Yang also scored.

Misericordia	1	0	1
Grove City	0	5	5

2010 ECAC Southern Tournament Semifinals

**No. 6 Marywood vs. No. 2 Grove City
Frostburg, Md. -- November 13, 2010**

Marywood's Erin Doyle scored in the 42nd minute to account for all of the scoring in the ECAC semifinal at Frostburg State University.

Marywood	1	0	1
Grove City	0	0	0

2011 ECAC Southern Tournament Quarterfinals

**No. 8 Grove City at No. 1 Frostburg State
Frostburg, Md. -- November 9, 2011**

Frostburg State scored three second-half goals to break a 1-1 halftime tie in the ECAC quarterfinals. Sam Weber scored in the 12th minute to tie the match.

Frostburg St.	1	3	4
Grove City	1	0	1

2012 NCAA Tournament First Round

**Grove City vs. Western Connecticut State
Grantham, Pa. -- November 10, 2012**

Junior forward Sam Weber scored 1:27 into overtime to give Grove City its first-ever NCAA Tournament victory. Chelsea Tarolli assisted Weber's game-winner.

W. Conn. St.	0	0	0	0
Grove City	0	0	1	1

2012 NCAA Tournament Second Round

**Grove City at Messiah
Grantham, Pa. -- November 11, 2012**

Eventual national champion Messiah ended Grove City's season by scoring twice in the first 13 minutes.

Messiah	2	1	3
Grove City	0	0	0

ALL-TIME RESULTS

1992

Coach: Rand Hudson
Season Record: 3-9-1

0	Allegheny	6
1	Steubenville	2
1	Slippery Rock	6
0	Waynesburg	3
5	Steubenville	1
4	Westminster	1
2	Allegheny	3
2	Wash. & Jeff.	2
0	Geneva	5
0	Waynesburg	3
0	Gannon	5
0	Carnegie Mellon	2
6	Westminster	1

1993

Coach: Melissa Lamie
Season Record: 9-6

0	California	5
3	Hiram	2
6	Steubenville	2
2	Waynesburg	0
0	Geneva	7
1	Bethany	3
3	Wash. & Jeff.	0
4	Westminster	0
5	Thiel	1
3	Wash. & Jeff.	2
4	Allegheny	1
0	Gannon	3
1	Bethany	3
1	Carnegie Mellon	3
3	Waynesburg	2

1994

Coach: Melissa Lamie
Season Record: 7-9

1	Trinity-Deerfield	5
3	Northwood	4
1	Baldwin-Wallace	4
1	Hiram	0
0	Allegheny	4
7	Waynesburg	1
1	Slippery Rock	0
0	Bethany	1
7	Wash. & Jeff.	0
3	Seton Hill	5
11	Muskingum	0
3	Wash. & Jeff.	1
0	Bethany	1
3	Gannon	6
0	Carnegie Mellon	3
3	Waynesburg	0

1995

Coach: Melissa Lamie
Season Record: 9-7-1

3	Baldwin-Wallace	1
0	Mount Union	3
1	Findlay	8
3	Hiram	0
0	PSU Behrend	1
1	Slippery Rock	0
3	Lake Erie	0

1	Allegheny	4
1	Bethany	1
4	Wash. & Jeff.	0
0	Seton Hill	2
8	Waynesburg	2
3	Wash. & Jeff.	0
0	Geneva	2
2	Bethany	1
7	Waynesburg	3
1	Carnegie Mellon	2

1996

Coach: Melissa Lamie
Season Record: 11-6

0	Baldwin-Wallace	4
11	Pitt-Bradford	0
1	Hiram	0
0	PSU Behrend	2
1	Carnegie Mellon	4
1	Allegheny	2
2	Bethany	1
6	Wash. & Jeff.	0
1	Seton Hill	3
5	Waynesburg	1
7	Wash. & Jeff.	0
9	Hilbert	0
1	Alfred	10
8	Chatham	0
5	Bethany	0
5	Waynesburg	0
5	Geneva	1

1997

Coach: Melissa Lamie
Season Record: 8-7-2

3	Hiram	0
3	Geneva	2
1	PSU Behrend	2
1	Carnegie Mellon	2
2	Bethany	2
0	Allegheny	7
9	Thiel	0
0	Fredonia	1
0	Slippery Rock	6
2	Wash. & Jeff.	1
1	Seton Hill	4
0	Houghton	8
0	Alfred	1
2	Waynesburg	1
1	Baldwin-Wallace	4
3	Bethany	2
4	Alfred	0

1998

Coach: Melissa Lamie
Season Record: 5-14-1

7	Hiram	2
0	Geneva	2
1	PSU Behrend	2
1	Fredonia	2
2	Bethany	4
0	Allegheny	1
4	Thiel	0
0	Houghton	3
1	Wash. & Jeff.	1
0	Westminster	3

1	John Carroll	0
0	Alfred	2
1	Waynesburg	0
0	Alfred	2
1	Waynesburg	0
0	Oberlin	2
0	Baldwin-Wallace	1
0	Carnegie Mellon	2
0	Seton Hill	5
1	Roberts Wesleyan	4
1	Bethany	0
0	Waynesburg	1

1999

Coach: Melissa Lamie
Season Record: 8-10

1	La Roche	2
1	Fredonia	2
1	Geneva	5
1	Hiram	0
1	PSU Behrend	4
2	John Carroll	7
5	Thiel	0
2	Wash. & Jeff.	1
2	Baldwin-Wallace	2
3	Chatham	1
2	Waynesburg	0
4	Bethany	0
2	Thiel	0
0	Wash. & Jeff.	1
1	Carnegie Mellon	2
4	Waynesburg	0
1	Bethany	2
0	Allegheny	3
2	Waynesburg	3

2000

Coach: Melissa Lamie
Season Record: 14-6

2	La Roche	1
1	Geneva	0
6	Cazenovia	0
2	Fredonia	1
0	Carnegie Mellon	1
0	PSU Behrend	1
3	Thiel	0
8	Wash. & Jeff.	1
0	Westminster	4
4	Waynesburg	1
4	Bethany	0
9	Thiel	0
2	Wash. & Jeff.	1
1	Westminster	4
3	Waynesburg	1
6	Bethany	1
0	Allegheny	2
5	Bethany	0
4	Waynesburg	0
1	Lebanon Valley	2

2001

Coach: Melissa Lamie
Season Record: 12-7-2

0	Hope	1
1	La Roche	2
6	Juniata	1
1	Fredonia State	1

1	Carnegie Mellon	2
0	John Carroll	1
5	Wash. & Jeff.	1
1	Westminster	4
0	PSU Behrend	0
3	Waynesburg	0
2	Bethany	0
4	Thiel	0
4	Wash. & Jeff.	0
2	Westminster	1
3	Waynesburg	0
4	Bethany	1
2	Thiel	1
0	Frostburg State	1
0	Allegheny	4
5	Bethany	1
4	Waynesburg	1

2002

Coach: Melissa Lamie
Season Record: 13-7-2

8	La Roche	1
4	Hope	3
1	Calvin	3
0	Carnegie Mellon	1
3	John Carroll	4
0	Allegheny	3
2	Mount Union	1
3	Frostburg State	3
8	Bethany	1
3	Thiel	1
9	Wash. & Jeff.	2
0	Westminster	1
6	Waynesburg	0
7	Bethany	1
1	Thiel	0
5	Wash. & Jeff.	0
1	Westminster	1
4	PSU Behrend	1
2	Waynesburg	0
4	Thiel	0
0	Westminster	2
2	Nazareth	3

2003

Coach: Melissa Lamie
Season Record: 16-5-1

1	Thomas More	1
2	Pitt-Greensburg	0
0	Carnegie Mellon	3
1	John Carroll	2
1	Allegheny	2
3	Mount Union	1
4	Frostburg State	2
2	Thiel	0
5	Wash. & Jeff.	1
2	Westminster	1
6	Waynesburg	0
6	PSU Behrend	0
4	Bethany	1
4	Thiel	1
2	Wash. & Jeff.	0
1	Westminster	0
5	Waynesburg	0
2	La Roche	1
2	Bethany	0
5	Bethany	0

ALL-TIME RESULTS

2	Westminster	3
0	Ithaca	2

2004

Coach: Melissa Lamie
Season Record: 14-6-2

1	Frostburg State	2
4	PSU Altoona	1
3	Medaille	0
0	Carnegie Mellon	3
0	Fredonia State	3
0	Capital	1
2	PSU Behrend	2
1	John Carroll	0
2	Mount Union	0
0	Allegheny	1
4	Wash. & Jeff.	1
0	Westminster	4
6	Waynesburg	0
10	Bethany	0
4	Thiel	0
2	Wash. & Jeff.	0
2	Westminster	0
2	Waynesburg	0
10	Bethany	1
6	Thiel	0
4	Thiel	0
1	Westminster	1

2005

Coach: Melissa Lamie
Season Record: 6-12-3

0	Wilmington	2
2	Otterbein	6
0	Carnegie Mellon	3
2	Thomas More	1
1	John Carroll	2
1	Mt. Union	2
0	Allegheny	3
0	Westminster	1
3	Waynesburg	1
1	Bethany	2
8	Thiel	0
1	Wash. & Jeff.	1
0	Westminster	3
2	Waynesburg	0
5	Bethany	1
0	Thomas More	0
3	Thiel	0
1	PSU Behrend	5
0	Wash. & Jeff.	2
4	Westminster	2
0	Thomas More	2

2006

Coach: Melissa Lamie
Season Record: 9-7-2

3	Medaille	0
1	Maryville	0
6	Waynesburg	0
0	John Carroll	1
5	Lake Erie	1
0	Allegheny	2
3	La Roche	2
2	Muskingum	0

0	Baldwin-Wallace	2
1	St. Vincent	4
5	Waynesburg	1
0	Westminster	4
7	Bethany	0
2	Wash. & Jeff.	2
2	PSU Behrend	5
9	Thiel	0
4	Thomas More	4
0	Westminster	1

2007

Coach: Melissa Lamie
Season Record: 16-4-1

2	Adrian	1
2	Aurora	1
8	Pitt-Greensburg	0
3	Lake Erie	0
0	Allegheny	0
2	La Roche	1
1	Mount Union	0
2	PSU Behrend	1
1	Baldwin-Wallace	0
3	Bethany	0
4	Waynesburg	0
3	St. Vincent	0
0	Thomas More	4
10	Chatham	3
2	Wash. & Jeff.	0
0	Westminster	2
2	Geneva	0
3	Thiel	0
1	Westminster	2
3	Juniata	2
0	Catholic	1

2008

Coach: Melissa Lamie
Season Record: 11-8-2

8	Medaille	2
2	Mount Saint Joseph	1
1	Fredonia State	3
0	Rochester	5
1	Allegheny	0
1	PSU Behrend	2
1	John Carroll	1
1	Baldwin-Wallace	1
0	Mount Union	1
0	Carnegie Mellon	1
7	Thiel	0
3	La Roche	0
6	Bethany	0
1	Waynesburg	0
4	St. Vincent	0
0	Thomas More	2
6	Chatham	0
0	Wash. & Jeff.	1
3	Westminster	1
1	Geneva	0
0	Thomas More	2

2009

Coach: Melissa Lamie
Season Record: 11-7-3

4	Daemen	3
0	Mount Union	0

0	John Carroll	5
1	Olivet	1
0	Allegheny	1
1	Baldwin-Wallace	1
0	PSU Behrend	1
3	Wash. & Jeff.	2
2	Carnegie Mellon	3
3	PSU Altoona	6
5	Thiel	0
1	Geneva	0
3	Bethany	2
3	Waynesburg	0
6	St. Vincent	0
2	Thomas More	0
4	Chatham	0
3	Westminster	0
2	Westminster	0
0	Wash. & Jeff.	1
1	PSU Behrend	2

2010

Coach: Melissa Lamie
Season Record: 12-8-1

4	Pitt-Johnstown	0
3	Oberlin	0
0	John Carroll	2
1	Case Western	2
0	Allegheny	1
4	Baldwin-Wallace	1
7	PSU Behrend	0
4	Mount Union	0
2	Carnegie Mellon	3
1	Wash. & Jeff.	3
5	Westminster	0
5	Geneva	0
6	Thiel	0
4	Bethany	1
1	Waynesburg	2
7	Saint Vincent	0
14	Chatham	0
0	Thomas More	1
1	Wash. & Jeff.	1
5	Misericordia	1
0	Marywood	1

2011

Coach: Melissa Lamie
Season Record: 10-8-2

5	D'Youville	0
3	Heidelberg	0
0	Case Western	1
1	John Carroll	2
0	Allegheny	1
1	Baldwin-Wallace	2
1	PSU Behrend	1
1	Mount Union	1
2	Bethany	0
1	Thomas More	4
5	Waynesburg	1
5	Thiel	0
1	Wash. & Jeff.	2
9	Chatham	1
1	Geneva	0
2	Susquehanna	1
3	Saint Vincent	1
2	Westminster	0
0	Thomas More	2
1	Frostburg State	4

2012

Coach: Melissa Lamie
Season Record: 16-4-2

1	Ohio Northern	1
3	Heidelberg	1
2	Rochester Inst. of Tech.	1
2	John Carroll	1
2	Allegheny	0
1	Baldwin-Wallace	0
2	Mount Union	1
1	Penn State Behrend	1
11	Bethany	0
1	Thomas More	2
1	Waynesburg	0
4	Thiel	0
1	Wash. & Jeff.	2
5	Chatham	0
1	Carnegie Mellon	3
4	Geneva	0
1	Saint Vincent	0
4	Westminster	0
2	Wash. & Jeff.	1
0	Thomas More	0
1	W. Connecticut St.	0
0	Messiah	3

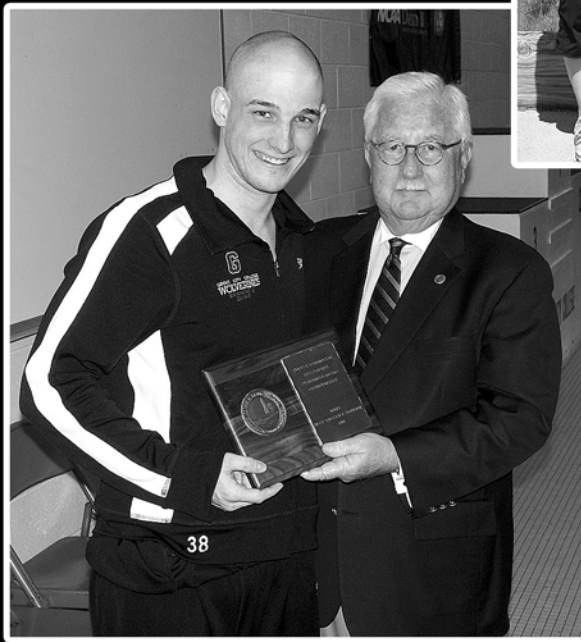
GROVE CITY CO



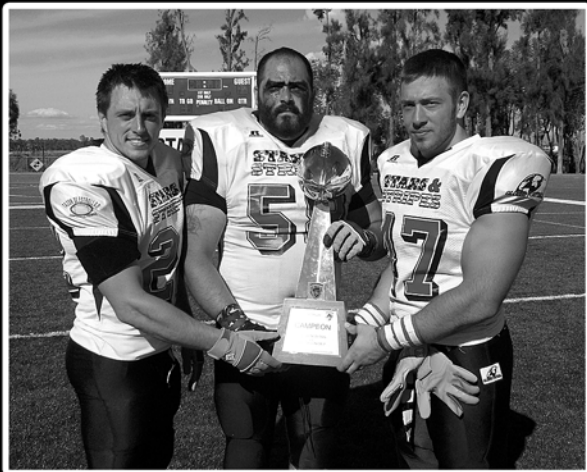
Leah Gibson concluded her career as Grove City's fifth-leading all-time scorer with 1,254 points.

Dave Bossert earned Swimmer of the Year honors at the 2013 James E. Longnecker Invitational and Presidents' Athletic Conference Championships.

The Grove City women's golf team won the Presidents' Athletic Conference title for the second time in three seasons.



The Grove City men's tennis team captured its 23rd Presidents' Athletic Conference championship and NCAA Championship.



Shane Kaclik, Josh Bermann and Jason Ferguson represented the United States in the "Bowl of the Stars" against the Mexican All-Stars following the 2012 season.



Swimmer Annie concluded her career as a two-time NCAA All-American and was the first two-time Sportswoman of the Year.

GROVE CITY COLLEGE SPORTS

COLLEGE SPORTS



Head men's basketball coach Steve Lamie earned his 200th career victory when Grove City downed Geneva on Hall of Fame Day at the College February 9, 2013.



Sarah Cessar earned NSCAA All-Great Lakes Region First Team after helping lead Grove City to the second round of the NCAA Championship Tournament.



men's tennis team 3rd consecutive Athletic Conference Championship Tournament.



Senior Ella Smith earned All-Mideast Region honors for the fourth straight season. Grove City also won its 23rd straight conference title.



Sophomore Caroline McGuire earned Presidents' Athletic Conference Player of the Year honors in women's tennis for the 2012-13 season.

Angela Palumbo career as a 21-time African and became time Grove City n of the Year.

ABOUT THE COLLEGE

The beautifully landscaped campus of Grove City College stretches over 150 acres and includes 28 neo-Gothic buildings. It is considered one of the loveliest in the nation.

While the College has changed to meet the needs of the society it serves, its basic philosophy has remained unchanged since its founding in 1876. It is a Christian, liberal arts institution, dedicated to the principle of providing the highest quality education at the lowest possible cost.

Wishing to remain truly independent and to retain its distinctive qualities as a private school governed by private citizens (trustees), it is one of few colleges in the country that does not accept federal funds.

Affiliated with the Presbyterian Church (U.S.A.), but not narrowly denominational, the College believes that to be well-educated a student should be exposed to the central ideas of the Judeo-Christian tradition.

Grove City College offers undergraduate degrees in liberal arts, sciences, engineering, business, and music and is distinguished as a national leader in education.

Grove City's programs in electrical and mechanical engineering are accredited by the Engineering Accreditation Commission Board of the Accreditation Board for Engineering and Technology.

The "big business school curriculum" prepares students for today's global business reality. An extensive variety of internship opportunities are provided across the curriculum.

Grove City College wants its students to be prepared in this age of mobile information technology.

Each entering freshman receives a tablet computer which is his or hers to keep upon graduation with a four-year degree.

This is part of the Information Technology Initiative, a total program integrating technology across the curriculum.



**Grove City College's
Breen Student Union**

The College believes that its student body has a unique mix of talents and abilities.

Its Career Services program helps students identify those key assets during the first year and then builds a four-year strategy to help them pursue a satisfying career.

Personal counseling, professional speakers, databases, alumni contacts, summer internships, corporate visits, employer presentations and more are incorporated into the career preparation experience.

Grove City follows the semester calendar plan, in addition to offering two-week sessions in January and May.

Most of the 2,500 students live in separate men's and women's dormitories. The rest are local commuters or married students.

A full program of cultural, professional, athletic and social activities is offered, including 19 intercollegiate varsity athletic teams.

Grove City, a town of 8,100 people, is located 60 miles north of Pittsburgh. It is located near Interstates 79 and 80 and has a municipal airport.

Grove City College 2013-2014

Tuition

\$7,440 per semester

Room and Board

\$4,054 per semester

PROGRAMS AND MAJORS

ACCOUNTING

Accounting (B.S.)

BIBLICAL AND RELIGIOUS STUDIES

Biblical and Religious Studies (B.A.)

BIOLOGY

Biology (B.S.)

BUSINESS

Business Management (B.S.)

Finance (B.S.)

Industrial Management (B.S.)

International Business (B.S.)

Marketing Management (B.S.)

CHEMISTRY

Biochemistry (B.S.)

Chemistry (B.S.)

COMMUNICATION STUDIES

Communication Studies (B.A.)

COMPUTER SCIENCE

Computer Science (B.S.)

Computer Information Systems (B.S.)

ECONOMICS

Economics (B.A.)

Business/Economics (B.S.)

EDUCATION

Pre K-4 Elementary Education (B.S.)

Pre K-8 Special Education and Pre K-4

Elementary Education (B.S.)

Middle Level Math/English/Science Education (B.S.)

K-12 Biology/General Science Education (B.S.)

K-12 French Education (B.A.)

K-12 Music Education (B.M.)

K-12 Spanish Education (B.A.)

7-12 Biology/General Science Education (B.S.)

7-12 Chemistry Education (B.S.)

7-12 Chemistry/General Science Education (B.S.)

7-12 English Education (B.A.)

7-12 English/Communication Education (B.A.)

7-12 Mathematics Education (B.S.)

7-12 Physics Education (B.S.)

7-12 Physics/General Science Education (B.S.)

7-12 Social Studies Education (B.A.)

ELECTRICAL/COMPUTER ENGINEERING

Electrical/Computer Engineering (B.S.E.E.)

ENGLISH

English (B.A.)

ENTREPRENEURSHIP

Entrepreneurship (B.S.)

HISTORY

History (B.A.)

MATHEMATICS

Mathematics (B.S.)

MECHANICAL ENGINEERING

Mechanical Engineering (B.S.M.E.)

MODERN LANGUAGES

French (B.A.)

Spanish (B.A.)

MUSIC & FINE ARTS

Music (B.M.)

Music/Business (B.M.)

Music/Performing Arts (B.M.)

Music/Religion (B.M.)

PHILOSOPHY

Philosophy (B.A.)

PHYSICAL EDUCATION

Exercise Science (B.S.)

PHYSICS

Physics (B.S.)

Physics/Computer Hardware (B.S.)

Physics/Computer Software (B.S.)

POLITICAL SCIENCE

Political Science (B.A.)

PSYCHOLOGY

Psychology (B.A. or B.S.)

SOCIOLOGY

Sociology (B.A.)

PRE-PROFESSIONAL PROGRAMS

Pre-Dental

Pre-Health

Pre-Law

Pre-Medical

Pre-Theology

Pre-Veterinary

ATHLETIC FACILITIES

All 19 of Grove City College's intercollegiate varsity athletic teams utilize the College's superior facilities for competition, practices and off-season training and conditioning.

Grove City's athletic facilities have undergone numerous renovations and improvements in recent years, with more upgrades scheduled in the immediate future.

On lower campus, Robert E. Thorn Field is home to the College's football and track and field teams. The College installed CSTurf at Robert E. Thorn Field. CSTurf is a synthetic playing surface that features polyethylene LSR grass fibers and a rubber infill system.

The College also installed lights and resurfaced the 8-lane track around the field. Grove City also reconfigured its setup for track meets during these renovations.

In 2011, the College installed a new state-of-the-art scoreboard and new bleachers on the visitors' side at Thorn Field.

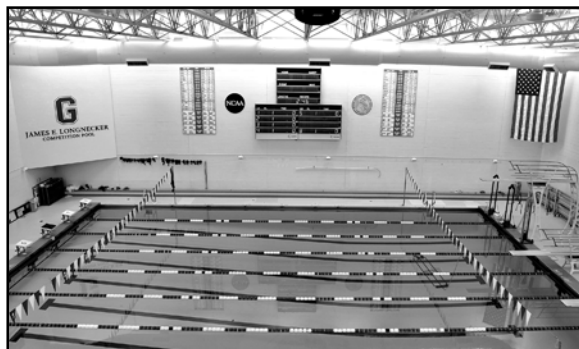
These upgrades benefit the entire campus community as the complex is used by both the College's club sports teams and its intramural program, along with the varsity teams.

The track is also available for use by recreational walkers and joggers. The complex also features 10 all-weather tennis courts next to the stadium.

Phillips Field House, located at the north end of the complex, features several locker rooms, an athletic training room, meeting rooms and coaches' offices. It is used by the football, track and tennis programs throughout the academic year.

The Physical Learning Center (PLC) houses the Grove City College Arena, home to the College's basketball and volleyball programs.

In summer 2012, the College renovated the Arena by installing new lighting and a new playing floor. In recent years, the Arena has also received new scoreboards and scorers' tables.



The James E. Longnecker Pool is one of the nation's premier small-college venues for both swimming and diving and water polo.



The home of Grove City's football and track and field teams, Robert E. Thorn Field has received numerous renovations in recent years.

In addition, the PLC features the James E. Longnecker Pool, one of the premier aquatic facilities in the region. Each year, Grove City hosts the Presidents' Athletic Conference Swimming and Diving Championships at the state-of-the-art facility.

In 2012, the College also hosted the Collegiate Water Polo Association Division III Championships at the James E. Longnecker Pool.

The PLC also features a second pool, the Recreational Pool, which is used by members of the College community year-round.

A fitness room featuring aerobic and Cybex equipment and a separate weight room with free and mechanized weights are also keystone areas of the facility.

The PLC also features six racquetball/handball courts as well as two adjacent intramural rooms. The intramural rooms each feature four basketball courts, four indoor tennis courts, four volleyball courts, an indoor track and two indoor jumping pits.

The College installed new synthetic flooring and several new electronic scoreboards throughout the intramural rooms.

The Physical Learning Center houses the athletic training room, locker rooms and offices for coaches and physical education faculty.

The College recently constructed a new office suite for coaches and athletic administration, while also incorporating its Athletic Hall of Fame area.

Grove City's outdoor athletic facilities have also received numerous upgrades in recent years.

The varsity soccer field, College Field, was expanded and re-sodded during the summer of 2005. College Field also received a new press box during the summer of 2007.

Meanwhile, Grove City's baseball and softball facilities recently received major facelifts as new dugouts, new fencing and electronic scoreboards were installed on both fields.

2013 SCHEDULE

AUG. 30-31	GETTYSBURG TOURNAMENT	
SEPT. 6	AT ADRIAN	3:00
SEPT. 11	AT ALLEGHENY	4:30
SEPT. 14	BALDWIN-WALLACE	1:00
SEPT. 18	AT PENN STATE BEHREND	7:00
SEPT. 21	JOHN CARROLL	1:00
SEPT. 25	MOUNT UNION	4:00
SEPT. 28	MESSIAH	1:00
OCT. 2	AT HOUGHTON	6:00
OCT. 4	WAYNESBURG*	2:00
OCT. 9	AT THIEL*	4:00
OCT. 12	BETHANY*	1:00
OCT. 15	GENEVA*	4:00
OCT. 19	AT WASH. & JEFF.*	1:00
OCT. 23	CHATHAM*	4:00
OCT. 26	AT WESTMINSTER*	2:30
OCT. 29	SAINT VINCENT*	4:00
Nov. 2	THOMAS MORE*	12:00
Nov. 5-9	PRESIDENTS' ATHLETIC CONFERENCE TOURNAMENT	

***-PRESIDENTS' ATHLETIC CONFERENCE MATCH**
HOME MATCHES IN ALL CAPS